

1. Anti-Money Laundering (AML) Regulations: We are legally required to verify all purchasers. The cost is £24 (inc VAT) per person.
2. General: These sales particulars are intended as a general guide only. If any detail is especially important, please contact us—particularly if you're travelling a long distance to view.
3. Measurements: All measurements are approximate and provided for guidance only.
4. Services: Services, equipment, and appliances have not been tested. Buyers should arrange their own surveys or inspections.
5. These details are given in good faith but do not form part of any offer or contract. Information should be independently verified. Hannells Limited and its employees or agents are not authorised to make representations or warranties regarding the property.

View This Property!

Get in touch today on the contact details below and we'd be delighted to arrange a viewing of this property for you.

W: hannells.co.uk
E: chaddesden@hannells.co.uk
T: 01332 281400

Viewing Arrangements: Strictly by prior appointment with Hannells Estate Agents.

These particulars are intended only as a guide to the property. They do not form part of the contract and although they are believed to be correct, they may be inaccurate in important aspects.

Viewing Strictly By Appointment Only

We recommend our preferred partner law firms who are solicitors selected by Us for their experience and efficiency in providing conveyancing services. We receive a referral fee of between £225 - £250 per completed transaction.

We recommend our preferred partner Mortgage intermediaries who are mortgage specialists available to provide you with the advice you need. We receive a referral fee of approximately £350 per completed transaction.

We recommend our preferred partner Insurance Company who provide Buildings and Contents Insurance. We receive a referral fee of approximately £25 per completed transaction.

We recommend our preferred partner Removal Company for home removals. We receive a referral fee of £50 per completed transaction.

You are NOT obliged to use our preferred partner services.

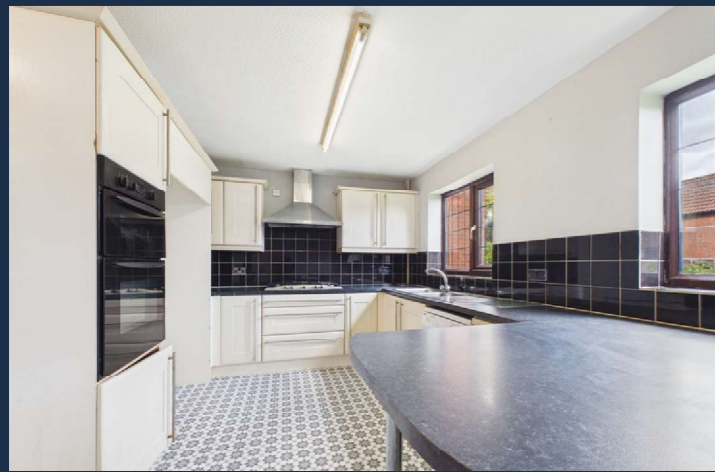
These particulars are intended to give a brief description of the property as a guide to prospective buyers. Accordingly, their accuracy is not guaranteed and Hannells Ltd nor the vendors accept any liability of their contents. They do not constitute an offer for sale. Any prospective purchasers should satisfy themselves by inspection or otherwise as to the correctness of any statements or information in these particulars. Please refer to the Agents if you require further clarification of information. The Property Misdescription Act 1991 – The Agent has not tested any apparatus, equipment, fixtures and fittings or services and so cannot verify that they are in working order or fit for the purpose. A buyer is advised to obtain verification from their Solicitor or Surveyor. References to the Tenure of the Property are based on information supplied by the Seller. The agent has not had sight of the title documents. A buyer is advised to obtain verification from their Solicitor.

2 Silverburn Drive, Oakwood, DE21 2JJ | Freehold

A substantial and thoughtfully extended detached residence, offering versatile five/six-bedroom accommodation with three en-suite bedrooms arranged over two floors. The property benefits from ample off-road parking for multiple vehicles and an enclosed rear garden, ideal for families and entertaining alike.

- Substantial Extended Five/Six Bedroom Detached Home
- EPC Rating C, Standard Construction
- Council Tax Band F, Freehold
- No Upward Chain,
- Versatile Accommodation





Full Description:

Internally, the property is double glazed and gas centrally heated throughout, with spacious accommodation briefly comprising: a welcoming reception hallway, a generous lounge with double doors opening into the dining room, which in turn provides access to the rear garden, and a well-appointed breakfast kitchen. There is also a versatile reception room/ground floor bedroom with en-suite facilities, a separate utility room leading through to a rear corridor with external access, and a converted double garage that now provides an impressively sized additional reception room with doors opening onto the rear garden.

To the first floor, the landing leads to a spacious principal bedroom with en-suite shower room, a further double bedroom with en-suite, and three additional well-proportioned bedrooms.

Externally, the property enjoys a generous driveway providing extensive off-road parking, while the enclosed rear garden offers a private outdoor space suitable for both relaxation and entertaining.

Room Measurements & Details:

- Entrance Hall:** (5'9" x 15'8") 1.75 x 4.78
- Living Room:** (11'4" x 15'11") 3.45 x 4.85
- Dining Room:** (11'3" x 10'5") 3.43 x 3.17
- Breakfast Kitchen:** (14'1" x 9'9") 4.29 x 2.97
- Utility Room:** (7'8" x 5'1") 2.34 x 1.55
- Ground Floor Bedroom/Reception Room:** (7'8" x 12'4") 2.34 x 3.76
- Ground Floor Shower Room:** (7'8" x 3'1") 2.34 x 0.94
- Side Hallway:** (3'1" x 17'4") 0.94 x 5.28
- Reception Room (Previously the garage):** (13'5" x 22'7") 4.09 x 6.88
- First Floor Landing:**
- Bedroom One:** (17'0" x 17'4") 5.18 x 5.28
- En-Suite Shower Room:** (9'5" x 5'8") 2.87 x 1.73
- Bedroom Two:** (11'7" x 14'0") 3.53 x 4.27
- En-Suite Shower Room:** (6'1" x 6'6") 1.85 x 1.98
- Bedroom Three:** (14'0" x 9'10") 4.27 x 3.00
- Bedroom Four:** (11'8" x 10'9") 3.56 x 3.28
- Bedroom Five:** (7'9" x 12'9") 2.36 x 3.89
- Family Bathroom:** (15'11" x 3'8") 4.85 x 1.12

A Moving Experience...