

FOR SALE



FASTNET ROAD THURNBY LODGE LEICESTER LE5 2PP

Offers Over

£160,000

FEATURES

- No Chain
- Popular Location
- 3 Bedrooms
- Kitchen
- Bathroom
- Cash buyers only
- Upgrading works required
- Lounge
- Utility / WC
- Spacious Garden



 **SETHS**

3 Bedroom Mid Terraced House for sale in Leicester

GROUND FLOOR

ENTRANCE AREA

Radiator, staircase leading to the first floor.

LOUNGE

16'3" x 12'6"

Carpeted, radiator, gas fireplace, understairs storage cupboard, uPVC double glazed window.

KITCHEN

15'1" x 6'5"

Wall and base units with worktops over, space for a gas hob, sink with drainer, space for a fridge/freezer, space for a washing machine, laminate flooring, radiator, partly tiled walls, uPVC double glazed window.

UTILITY / WC

20'6" x 6'7"

Laminate flooring, x2 doors providing access to the rear garden, separate door providing access to the side alleyway, WC, extractor fan, x2 windows

FIRST FLOOR

BEDROOM 1

12'0" x 8'7"

Laminate flooring, radiator, storage cupboard, window.

BEDROOM 2

12'10" x 10'4"

Carpeted, radiator, storage cupboard, window.

BEDROOM 3

8'6" x 7'6"

Radiator, window.

BATHROOM

WC, wash hand basin, bathtub with electric shower overhead, laminate flooring, tiled walls, radiator, window.

OUTSIDE

To the front of the property is a small front garden with hedges providing privacy. To the rear of the property is a good-sized garden with wooden fence surrounds.

ADDITIONAL INFO

Tenure: Freehold

EPC rating: tbc

Council Tax Band: A

Council Tax Rate: £1,685.83

Mains Gas: Yes

Mains Electricity: Yes

Mains Water: Yes

Mains Drainage: Yes

Broadband availability: Full Fibre Broadband



UPPINGHAM ROAD OFFICE SALES | 265 UPPINGHAM ROAD, LEICESTER, LE5 4DG

GROUND FLOOR

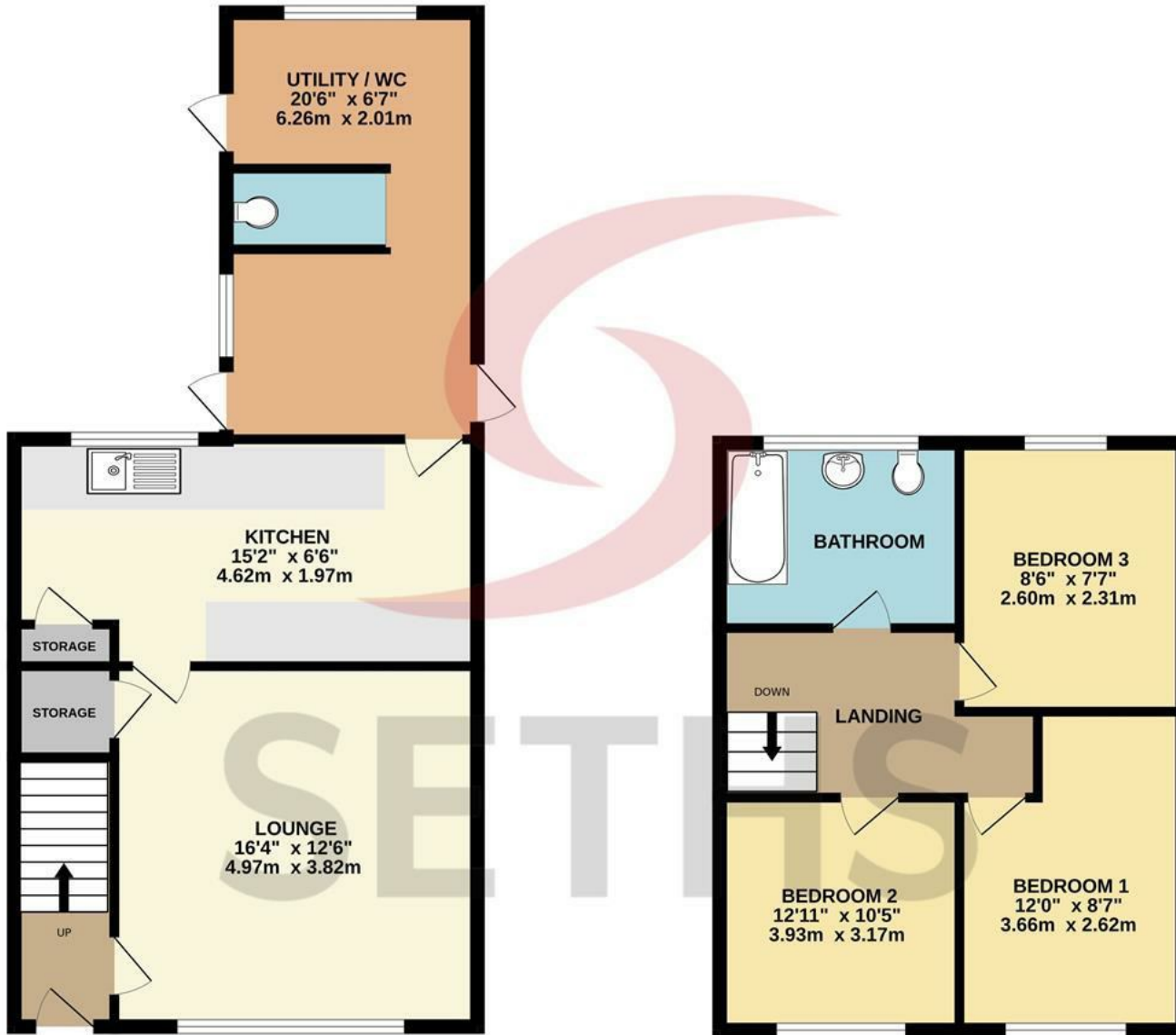
1ST FLOOR

Call us on

0116 266 9977

info@seths.co.uk

www.seths.co.uk



Agents Note: Whilst every care has been taken to prepare these particulars, they are for guidance purposes only. All measurements are approximate and are for general guidance purposes only and whilst every care has been taken to ensure their accuracy, they should not be relied upon and potential buyers are advised to recheck the measurements.

