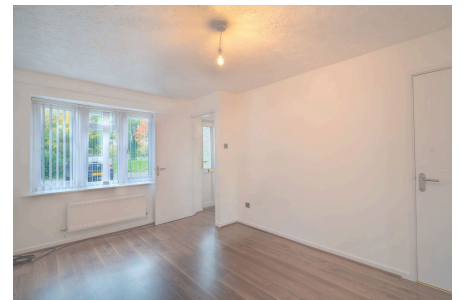


Gospel Lane, Birmingham, B27 7AD

Offers Over £210,000

🛏️ 2 🚿 1 🚗 1

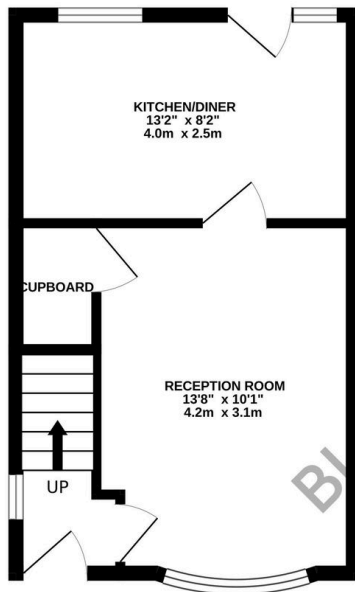


Beautifully Presented Modern Two Bedroom Home with Scenic Field Views, Stylish Interiors, and Excellent Transport Links – 148 Gospel Lane, Acocks Green, Birmingham, B27 7AD offered with NO UPWARD CHAIN.

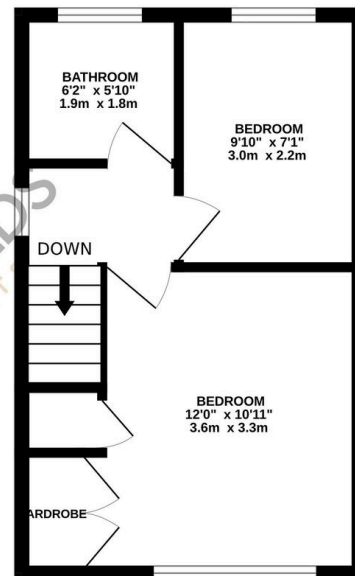
Key Features

- Modern and well-maintained two-bedroom home
- Peaceful field views to the front of the property
- Bright reception room with bay window
- Stylish kitchen/diner with garden access
- Private rear garden with a modern, low-maintenance finish
- Spacious main bedroom with built-in wardrobe
- Contemporary family bathroom
- Situated close to local schools, parks, and amenities
- Excellent transport links to Birmingham and Solihull
- Ideal for first-time buyers, downsizers, or investors

GROUND FLOOR
290 sq.ft. (27.0 sq.m.) approx.



1ST FLOOR
288 sq.ft. (26.8 sq.m.) approx.



TOTAL FLOOR AREA : 578 sq.ft. (53.7 sq.m.) approx.

Whilst every attempt has been made to ensure the accuracy of the floorplan contained here, measurements of doors, windows, rooms and any other items are approximate and no responsibility is taken for any error, omission or mis-statement. This plan is for illustrative purposes only and should be used as such by any prospective purchaser. The services, systems and appliances shown have not been tested and no guarantee as to their operability or efficiency can be given.
Made with Metropix ©2025