

Apt 6, 19 York Road, Chorlton, Manchester, M21 9HP

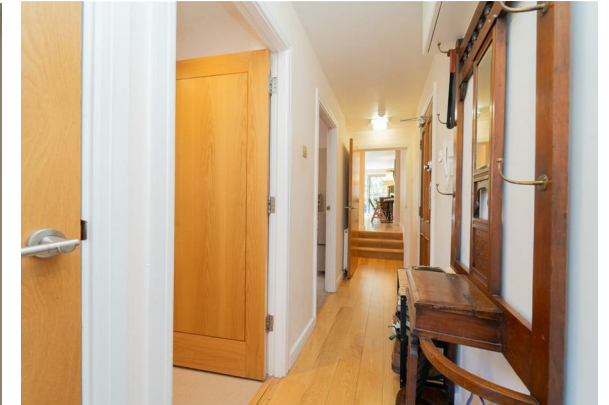


JP&Brimelow
ESTATE AGENTS

Offers In The Region Of £315,000

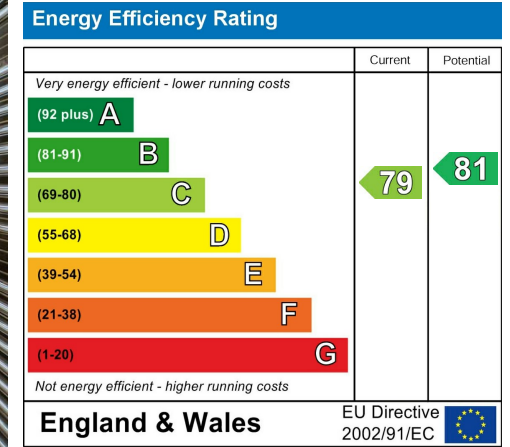


VIDEO TOUR AVAILABLE A spacious and beautifully presented, TWO DOUBLE BEDROOM first-floor apartment, set within an attractive period semi-detached property. Located in a sought-after residential area in the heart of Chorlton, this apartment is just a short walk from central Chorlton and Beech Road with its array of independent shops, local amenities, Beech Road Park and the Wilbraham Road Metrolink, providing direct access to the City Centre and Media City. This thoughtfully designed accommodation features a communal entrance hallway with stair leading to all floors, a private entrance hall with a useful storage cupboard, two double bedrooms benefitting from built in wardrobes, a modern three-piece bathroom suite and a fabulous open plan lounge/diner with a fully-fitted kitchen area. The lounge/dining area features a private balcony overlooking the communal lawned garden. Additionally this home includes gas-fired central heating, an alarm system, a communal garden and off-road parking. Early viewing is highly recommended for its spacious layout of this prime location home.





EPC Chart



Tenure: **Leasehold** Council Tax Band: **B**

First Floor



JP & Brimelow Estate Agents Ltd
430 Barlow Moor Road, Manchester, M21 8AD
Tel: 0161 8822233
E: sales@jpbrimelow.co.uk www.jpandbrimelow.co.uk



JP&Brimelow
ESTATE AGENTS

NOTICE: JP & Brimelow Estate Agents Ltd for themselves and for the vendors or lessors of this property whose agents they are give notice that:

- (i) the particulars are set out as a general outline only for the guidance of intending purchasers or lessees, and do not constitute, nor constitute part of, an offer or contract;
- (ii) all descriptions, dimensions, references to the condition and necessary permissions for use and occupation, and other details are given in good faith and are believed to be correct but any intending purchasers or tenants should not rely on them as statements or representations of fact but must satisfy themselves by inspection or otherwise as to the correctness of each of them;
- (iii) no person in the employment of JP & Brimelow Estate Agents Ltd has any authority to make or give any representation or warranty whatever in relation to this property.

jpandbrimelowstateagents

@jpandbrimelow