



Springfield Road, CR7
£750,000

Dexters



Springfield Road, CR7

A double fronted four bedroom family home, large garden and off street parking.

Presented in good condition, this extended family home comprising to the ground floor is a spacious Kitchen and utility area, w.c, thru lounge, conservatory and storage space. Upstairs there are four bedrooms one of which is en-suite and separate bathroom with walk in shower. Externally there is off street parking for multiple cars, a garage and a large private garden.

Springfield Road is located in a sought-after area within Norbury off of Green Lane. This property benefits from being in close proximity to local amenities and schools. The property also lies only 0.8 miles from Norbury Station.

Features

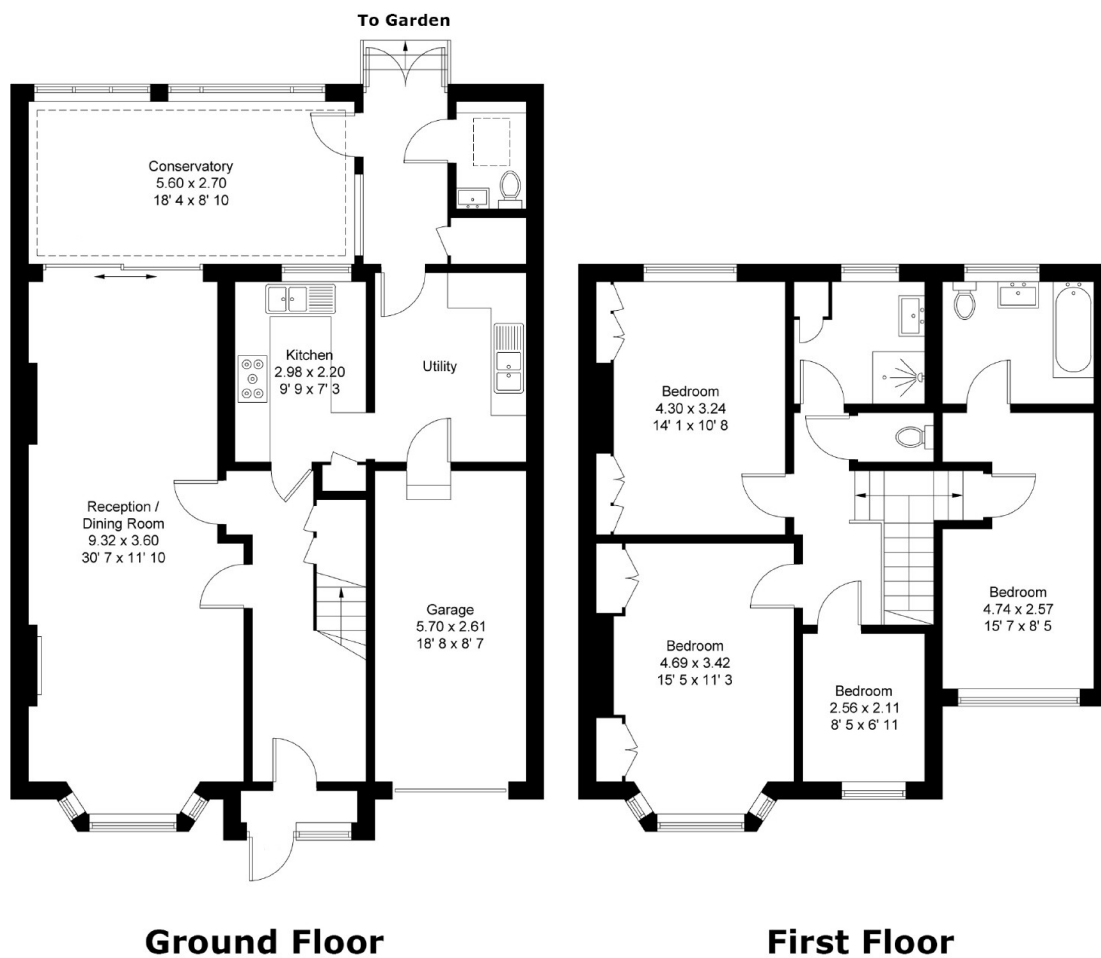
- Double fronted
- Four bedrooms
- Chain-Free
- Driveway & garage
- Large garden
- EPC: D







Springfield Road, Thornton Heath, CR7



Total area (approx.): 172.9 sq. m (1,861.1 sq. ft)