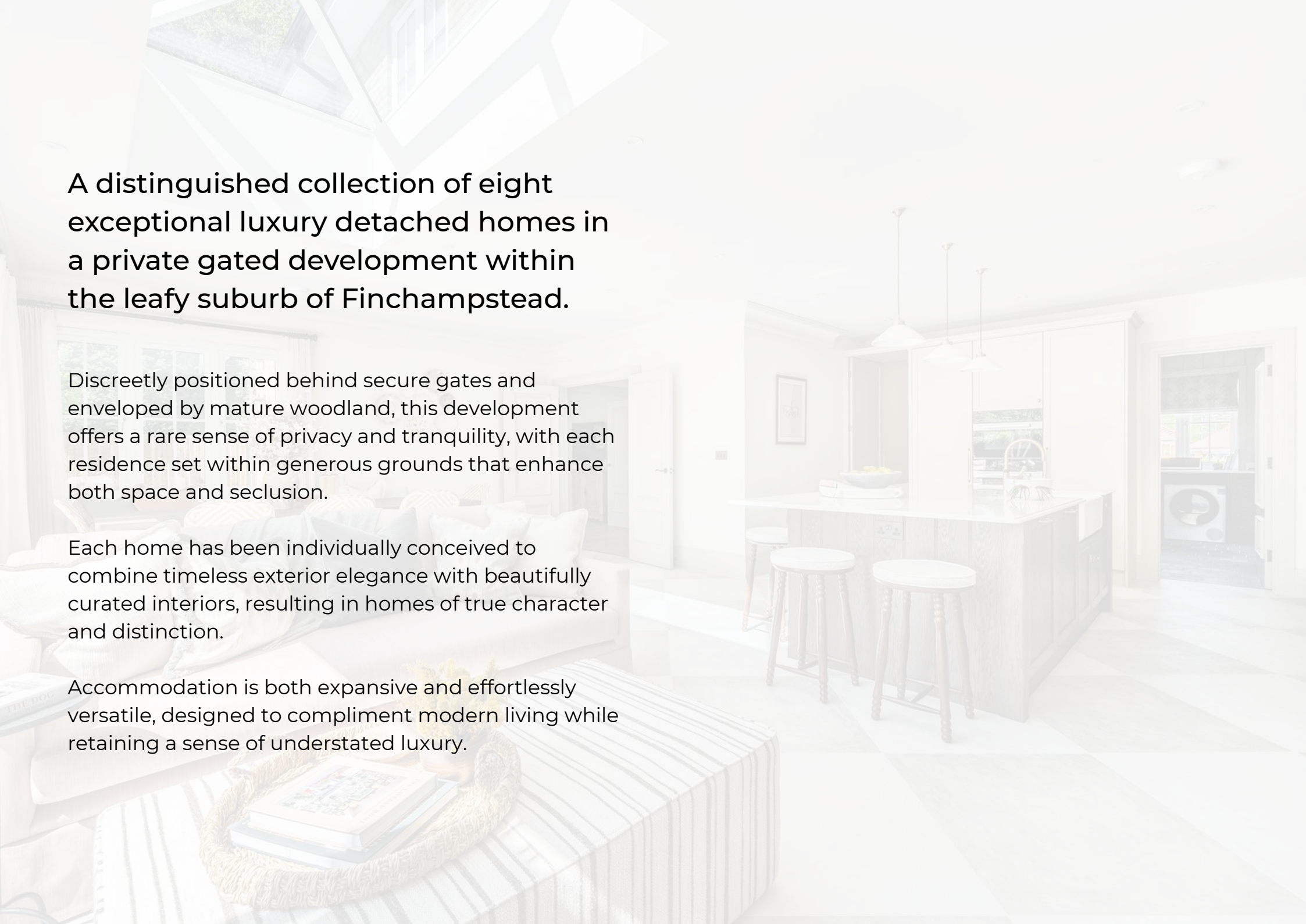




PEYTON PLACE

JOHNSON DRIVE, FINCHAMPSTEAD, BERKSHIRE

A bright, modern interior featuring a kitchen island with a white countertop and dark wood base, three white bar stools, and a living area with a light-colored sofa and a striped ottoman. The room is well-lit with natural light from large windows and skylights.

A distinguished collection of eight exceptional luxury detached homes in a private gated development within the leafy suburb of Finchampstead.

Discreetly positioned behind secure gates and enveloped by mature woodland, this development offers a rare sense of privacy and tranquility, with each residence set within generous grounds that enhance both space and seclusion.

Each home has been individually conceived to combine timeless exterior elegance with beautifully curated interiors, resulting in homes of true character and distinction.

Accommodation is both expansive and effortlessly versatile, designed to compliment modern living while retaining a sense of understated luxury.





THE PIG



At the heart of each home lies an impressive open-plan kitchen, living and dining space, perfectly suited to both relaxed family life and sophisticated entertaining.

Kitchens are exquisitely appointed with:

- Bespoke handcrafted Charles Yorke cabinetry
- Statement central island with additional storage
- Premium quartz worktops with a polished finish
- Quooker boiling water tap for instant convenience
- Miele cooking appliances
- InSinkErator waste disposal system
- Fully integrated Siemens dishwasher
- Integrated full-height Siemens fridge and freezer
- Walk-in cold pantry providing additional, well-organised storage





Each home benefits from either a well-appointed boot room or a spacious utility room, both thoughtfully designed with additional bespoke cabinetry and equipped with Siemens washing machine and tumble dryer as standard.





The principal suite is thoughtfully designed to a consistent layout across each home, offering a generous bedroom and a dedicated walk-in dressing area.

Bespoke fitted storage is complemented by illuminated shelving and ample hanging space and there is provision for air conditioning ensuring year-round comfort.

En-suites have been conceived as elegant, spa-like retreats, where Vitra sanitaryware and Burlington fittings are paired with beautifully crafted vanity units and considered detailing.



Generous walk-in showers and sculptural freestanding baths sit alongside twin basins, while underfloor heating adds a subtle layer of comfort, creating spaces that are both indulgent and effortlessly refined.

Further bedrooms are equally well-proportioned, continuing the sense of space and refinement found throughout the home, with carefully considered layouts and high-quality finishes.





The gardens are thoughtfully landscaped to create an immediate sense of privacy and maturity, with established tree planting and generous lawned areas. A well-positioned terrace extends seamlessly from the open-plan kitchen via bi-fold doors, providing an ideal setting for outdoor dining and entertaining.

Externally, each home is enhanced by contemporary architectural lighting, with discreetly integrated power points and water supply, ensuring both practicality and ambience throughout the grounds. For those with specific lifestyle requirements, there is also the option to incorporate a heated dog wash, subject to individual preference.

Each plot offers generous parking, complemented by provision for electric vehicle charging. Six of the eight homes are further enhanced by bespoke car barns, complete with lighting and additional power.





P A L A T I N E

H O M E S

Palatine Homes is a boutique, privately owned house-builder based in Beaconsfield.

They specialise in crafting aspirational, high-quality homes that blend timeless exterior charm with thoughtfully designed interiors tailored for 21st-century living .

Their ethos centres on creating distinctive residences in prime, sought-after locations - each one a bespoke expression of luxury, from carefully sourced exterior materials and mature landscaping to sophisticated finishes and technical excellence throughout .

Every Palatine development embodies a lifestyle, delivering a harmonious balance of elegance, functionality, and personalisation - earning enduring appeal in the hearts and homes of discerning buyers.

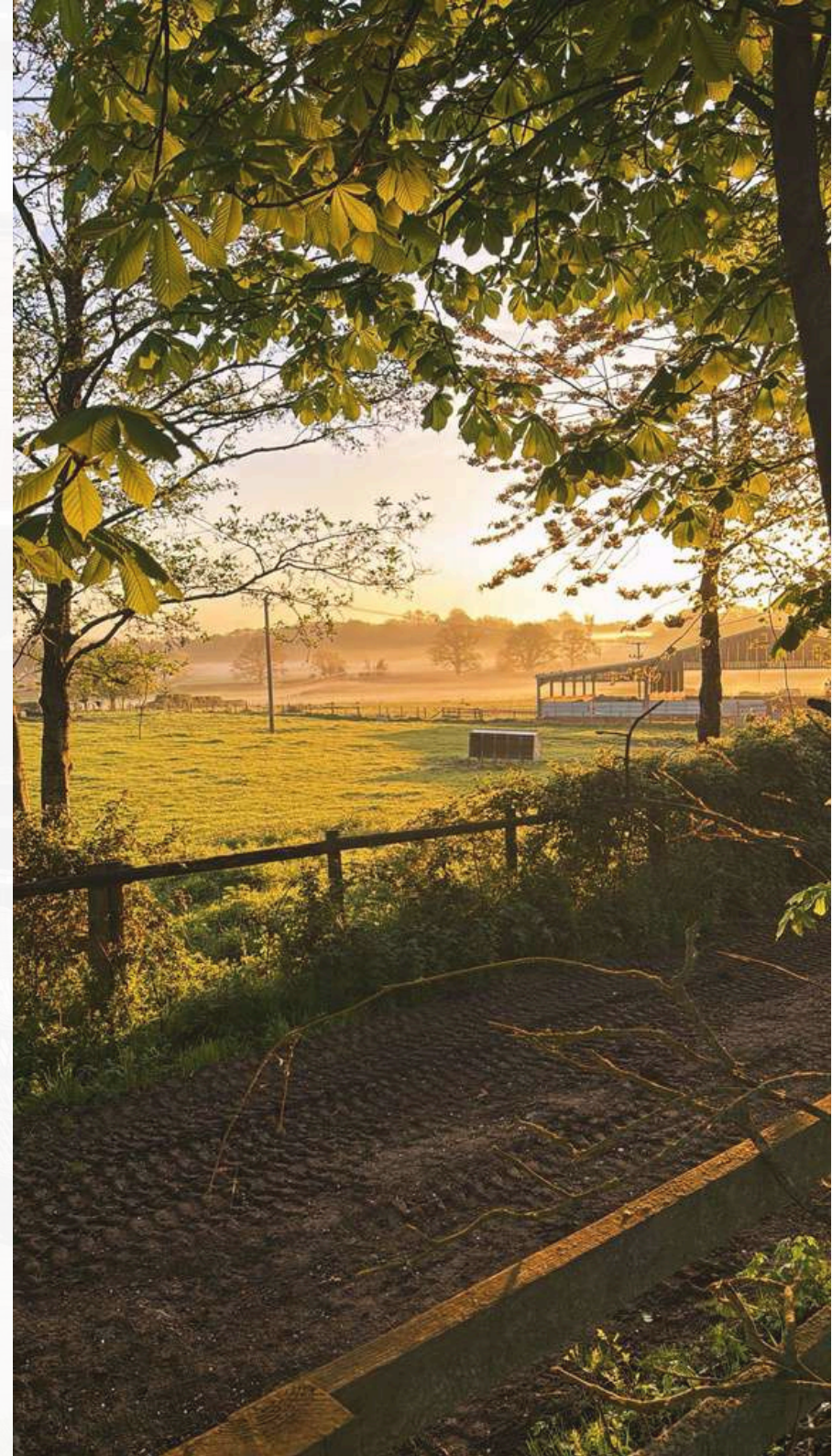
Whether it's a family villa or a refined town house, they are committed to elevating the everyday through superior craftsmanship and imaginative design.

Set within the desirable Berkshire countryside, Finchampstead offers an exceptional balance of rural tranquillity and everyday convenience.

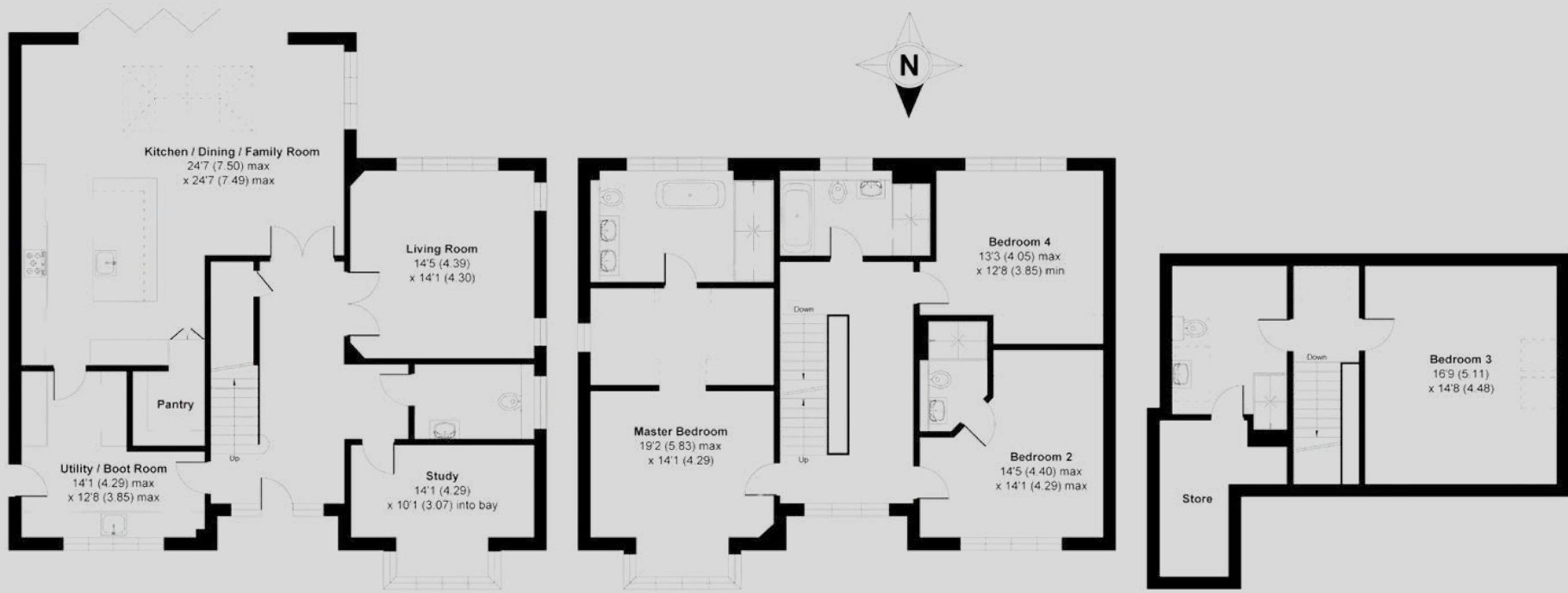
Surrounded by ancient woodland and open green spaces, the village is perfectly suited to those seeking a more relaxed pace of life, with scenic walks, country pubs and a strong sense of community at its heart.

Despite its peaceful setting, Finchampstead remains superbly connected, with the nearby market town of Wokingham providing an excellent selection of shops, restaurants and leisure amenities, along with fast rail links into London.

The area is also renowned for its outstanding schooling, both state and independent, making it an enduringly popular choice for families and those seeking a refined yet well-connected lifestyle.



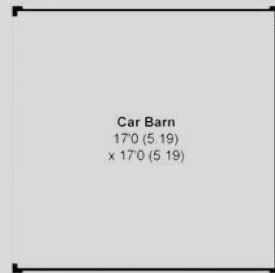
Plot 1



GROUND FLOOR

FIRST FLOOR

SECOND FLOOR



CAR BARN



Plot 2

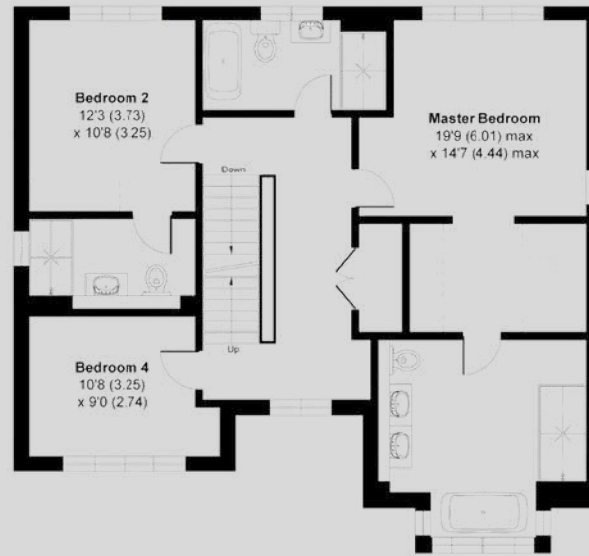




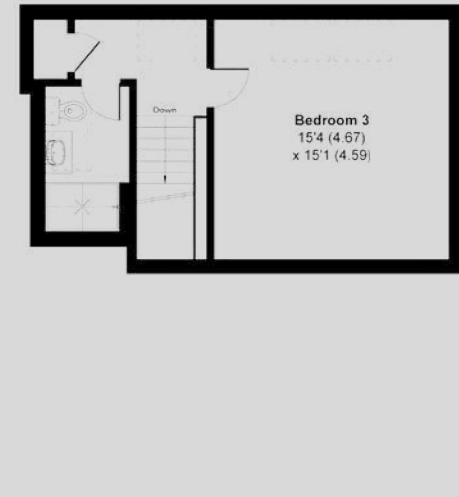
Plot 4



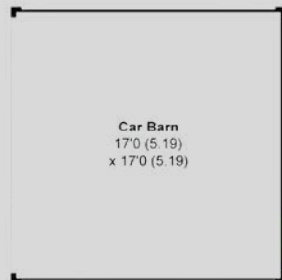
GROUND FLOOR



FIRST FLOOR

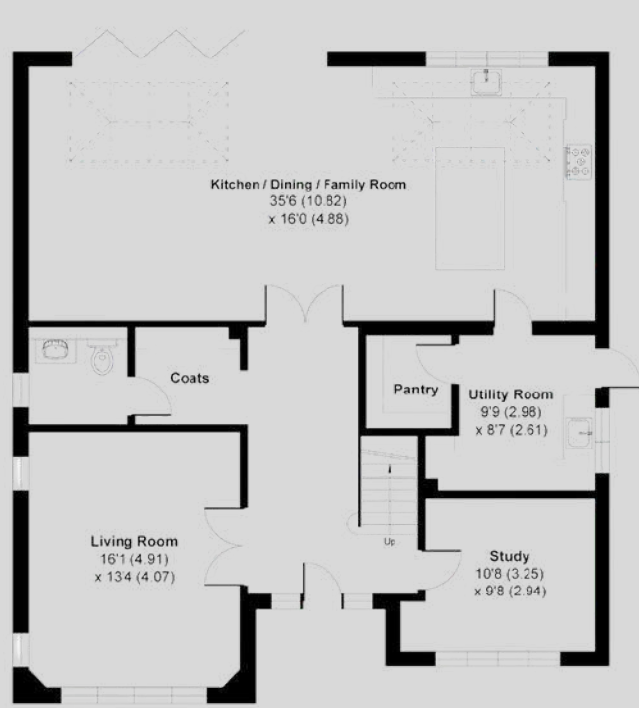


SECOND FLOOR

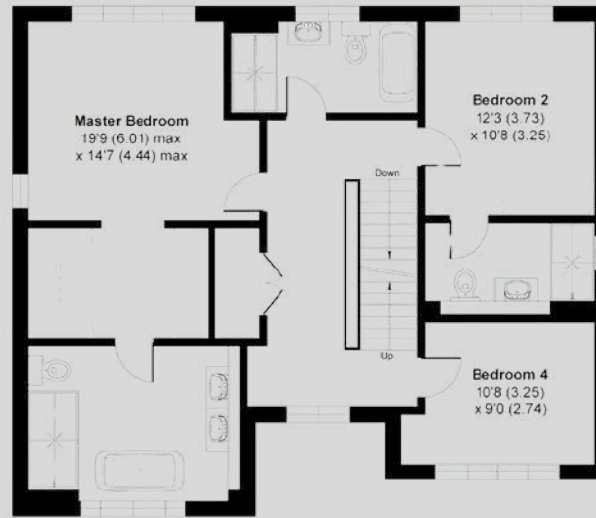


CAR BARN

Plot 5



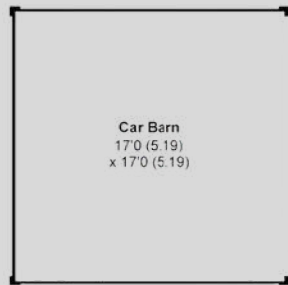
GROUND FLOOR



FIRST FLOOR



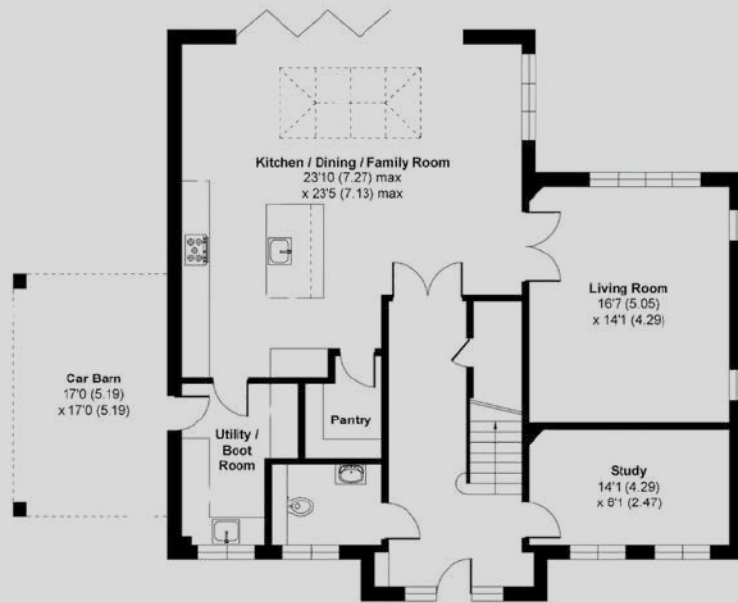
SECOND FLOOR



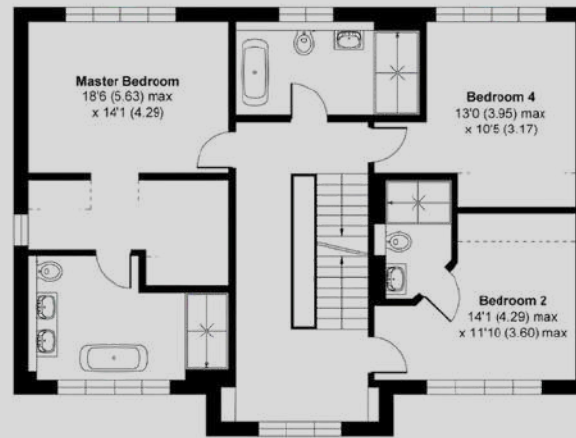
CAR BARN



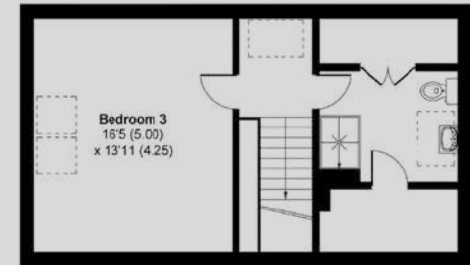
Plot 6



GROUND FLOOR

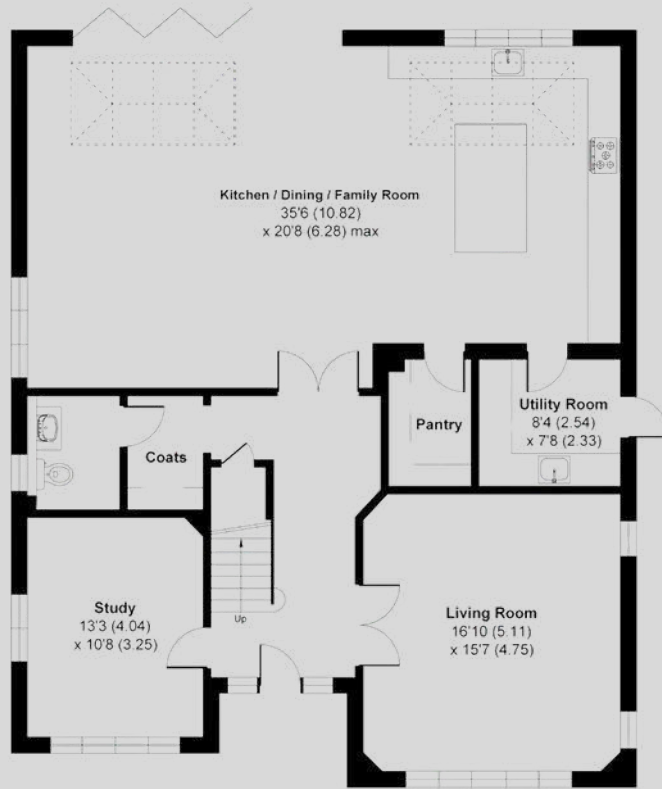


FIRST FLOOR



SECOND FLOOR

Plot 7



GROUND FLOOR



FIRST FLOOR



SECOND FLOOR

Plot 8



GROUND FLOOR



FIRST FLOOR



SECOND FLOOR



CAR BARN

For all enquiries contact Dach Real Estate

0118 321 0693

info@dach.property

dach.property

The logo for Dach Real Estate is displayed on a light beige square background. The word "dach" is written in a large, bold, lowercase sans-serif font. Below it, the words "REAL ESTATE" are written in a smaller, uppercase, spaced-out sans-serif font.

dach
REAL ESTATE