

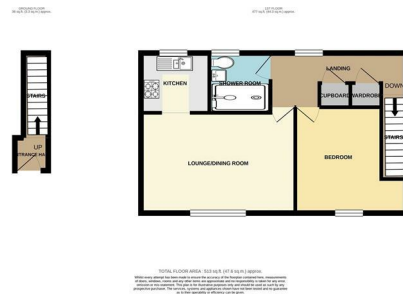


Rockingham Road, Bury St. Edmunds, Suffolk, IP33 2SA

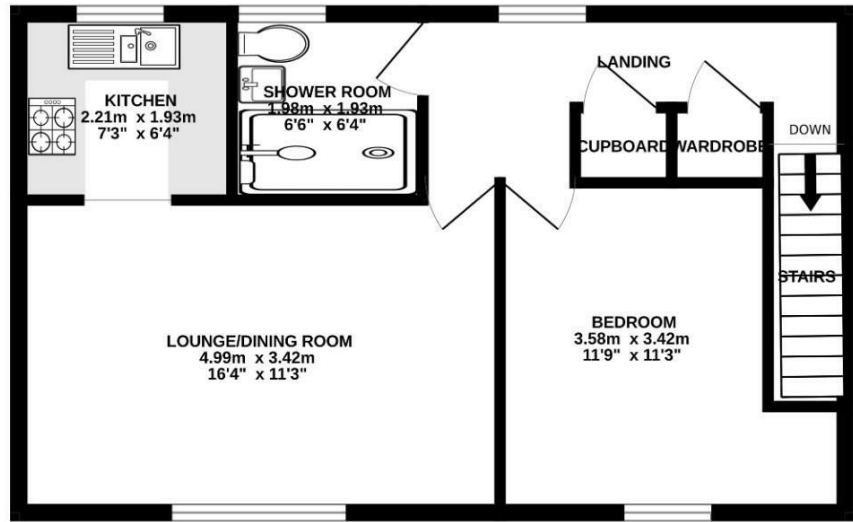
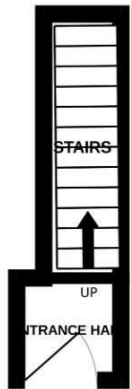
Rent - £1,000 PCM Deposit - £1,153

Delightful one-bedroom apartment, ideal for individuals or couples. The apartment's location is in close proximity to the town centre and easy access to the A14 connecting you to nearby towns and cities. The property includes off-road parking for one vehicle, adding to the convenience of this lovely home.

- APARTMENT OVER THE ARCH
- ONE BEDROOM
- SHOWER ROOM
- COUNCIL TAX BAND - A
- AVAILABLE MID AUGUST
- DESIRABLE RESIDENTIAL LOCATION
- GAS HEATING & ENERGY RATING - C
- GAS FIRED HEATING
- OFF ROAD PARKING



Council Tax Band: A - EPC Rating: C 74



Whilst every attempt has been made to ensure the accuracy of the floorplan contained here, measurements of doors, windows, rooms and any other items are approximate and no responsibility is taken for any error, omission or mis-statement. This plan is for illustrative purposes only and should be used as such by any prospective purchaser. The services, systems and appliances shown have not been tested and no guarantee as to their operability or efficiency can be given.
Made with Metropix ©2025

