



Finchley Road, NW8

£425 Per week

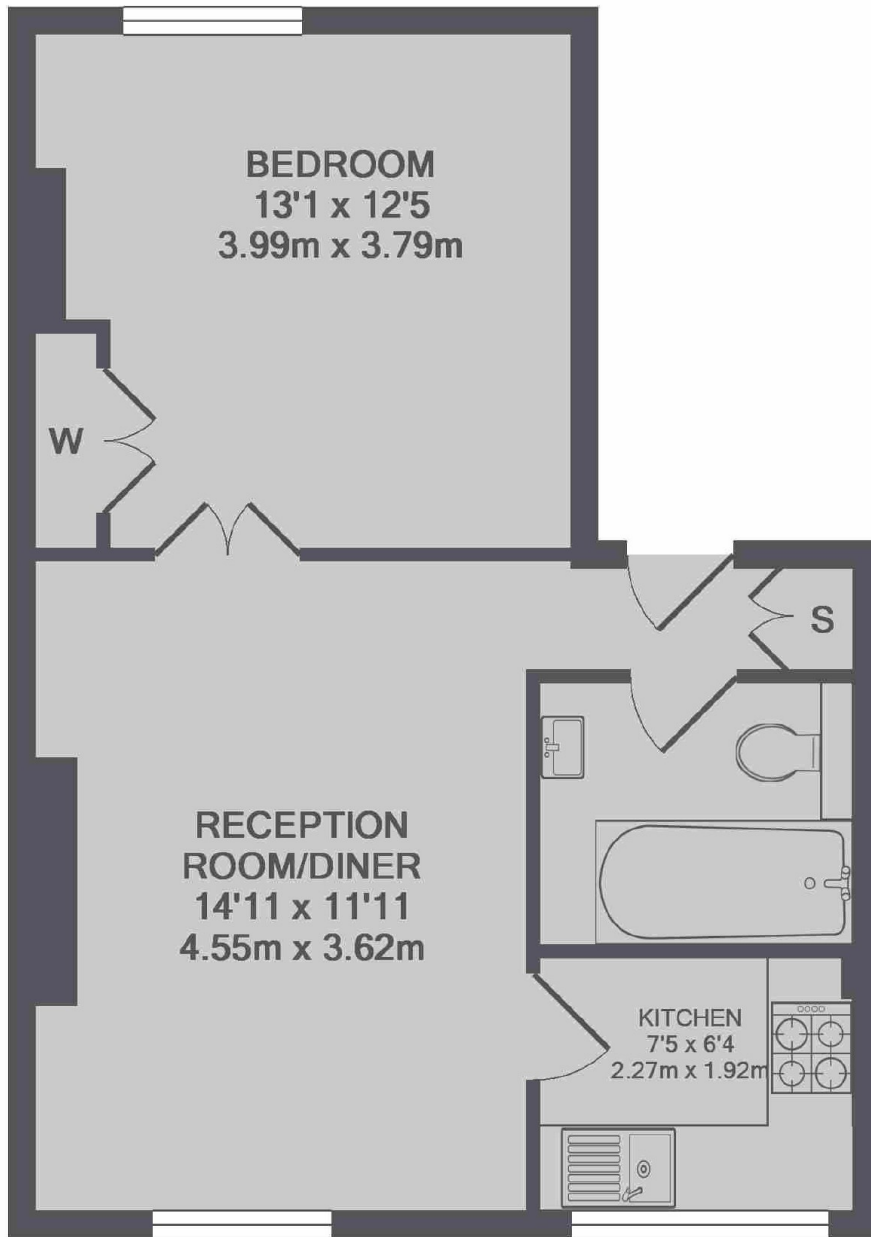
A well presented one bedroom flat on the 2nd floor of a period conversion close to St John's Wood underground station. Bright reception room, separate kitchen, good size bedroom with storage and bathroom with shower over bath.

The property is located on Finchley Road which is a short distance to St. John's Wood station giving tenants quick access to Central London and Canary Wharf on the Jubilee Line.

Features

- One Double Bedroom
- Large Reception Room
- Separate Kitchen
- Separate Utility Room
- Unallocated Parking

Finchley Road,
London, NW8



TOTAL APPROX. FLOOR AREA 465 SQ.FT. (43.2 SQ.M.)

Dexters

St. John's Wood
4-6 St Ann's Terrace
London
NW8 6PJ
Lettings
020 7483 6330

Energy Rating: C. We aim to make our particulars both accurate and reliable. However they are not guaranteed; nor do they form part of an offer or contract. If you require clarification on any points then please contact us, especially if you're traveling some distance to view. Please note that appliances and heating systems have not been tested and therefore no warranties can be given as to their good working order.

 **RICS** | Regulated
Estate Agent
and Letting Agent

dexters.co.uk