



Filberts, King's Lynn, PE30 4SW

welcome to

Filberts, King's Lynn

Would suit a first time buyer or investor alike and being conveniently close to the Queen Elizabeth Hospital is this well presented three bedroom mid terrace house with off road parking, including EV charging point, and benefiting from solar panels. Viewing highly recommended.



Entrance Door To:-

Entrance Hall

Radiator, stairs to first floor, storage cupboard

Cloakroom

Low level WC, wash hand basin, radiator, double glazed window

Lounge/Diner

22' 11" max x 11' 5" max (6.99m max x 3.48m max)
Double glazed window, radiator, double glazed patio doors to rear

Kitchen

10' 7" x 9' (3.23m x 2.74m)
Range of base and wall units, roll edge work top, inset sink with mixer tap over, built-in oven, hob and extractor over, space for washing machine and fridge freezer, door to rear lobby and exit door to rear

First Floor Landing

Loft access

Bedroom One

12' 1" x 10' 7" (3.68m x 3.23m)
Built-in cupboard, double glazed window, radiator

Bedroom Two

11' 7" x 10' 8" (3.53m x 3.25m)
Built-in cupboard, double glazed window, radiator

Bedroom Three

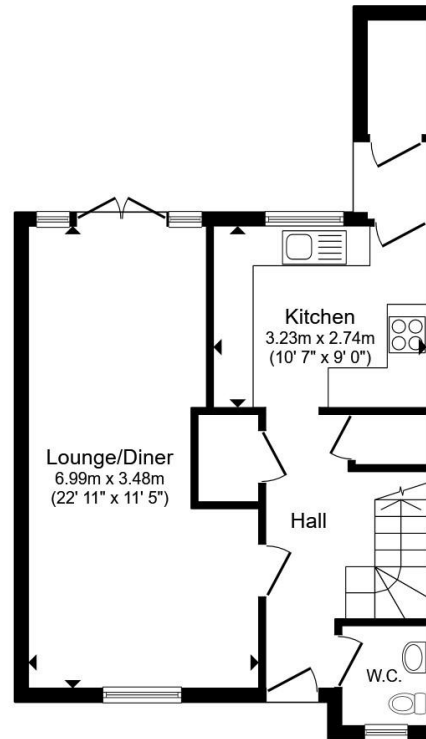
9' 2" x 9' 1" (2.79m x 2.77m)
Double glazed window, radiator

Shower Room

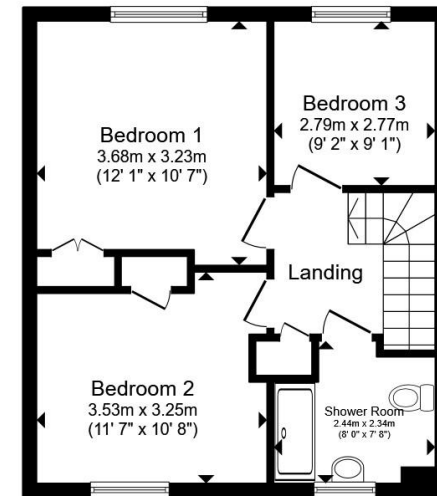
Shower cubicle, low level WC, wash hand basin, double glazed window

Outside

Off road parking, EV Charging point, Solar panels, Well maintained rear garden with access gate.



Ground Floor



First Floor

Total floor area 87.6 m² (943 sq.ft.) approx

This floor plan is for illustrative purposes only. It is not drawn to scale. Any measurements, floor areas (including any total floor area), openings and orientation are approximate. No details are guaranteed, they cannot be relied upon for any purpose and they do not form part of any agreement. No liability is taken for any error, omission or misstatement. A party must rely upon its own inspection(s). Powered by www.propertybox.io



check out more properties at williamhbrown.co.uk



welcome to

Filberts, King's Lynn

- Ideally Locate Close to Amenities
- Mid Terrace House
- Three Bedrooms
- Lounge/Diner
- Cloakroom

Tenure: Freehold EPC Rating: Awaited

Council Tax Band: A

£190,000



Please note the marker reflects the postcode not the actual property

check out more properties at williamhbrown.co.uk



Property Ref:
KLN119533 - 0003

1. MONEY LAUNDERING REGULATIONS Intending purchasers will be asked to produce identification documentation at a later stage and we would ask for your co-operation in order that there is no delay in agreeing the sale. 2. These particulars do not constitute part or all of an offer or contract. 3. The measurements indicated are supplied for guidance only and as such must be considered incorrect. Potential buyers are advised to recheck measurements before committing to any expense. 4. We have not tested any apparatus, equipment, fixtures or services and it is in the buyers interest to check the working condition of any appliances. 5. Where an EPC, or a Home Report (Scotland only) is held for this property, it is available for inspection at the branch by appointment. If you require a printed version of a Home Report, you will need to pay a reasonable production charge reflecting printing and other costs. 6. We are not able to offer an opinion either written or verbal on the content of these reports and this must be obtained from your legal representative. 7. Whilst we take care in preparing these reports, a buyer should ensure that his/her legal representative confirms as soon as possible all matters relating to title including the extent and boundaries of the property and other important matters before exchange of contracts.

William H Brown is a trading name of Sequence (UK) Limited which is registered in England and Wales under company number 4268443, Registered Office is Cumbria House, 16-20 Hockliffe Street, Leighton Buzzard, Bedfordshire, LU7 1GN. VAT Registration Number is 500 2481 05.



01553 771337



KingsLynn@williamhbrown.co.uk



40-42 King Street, KING'S LYNN, Norfolk, PE30 1ES



williamhbrown.co.uk