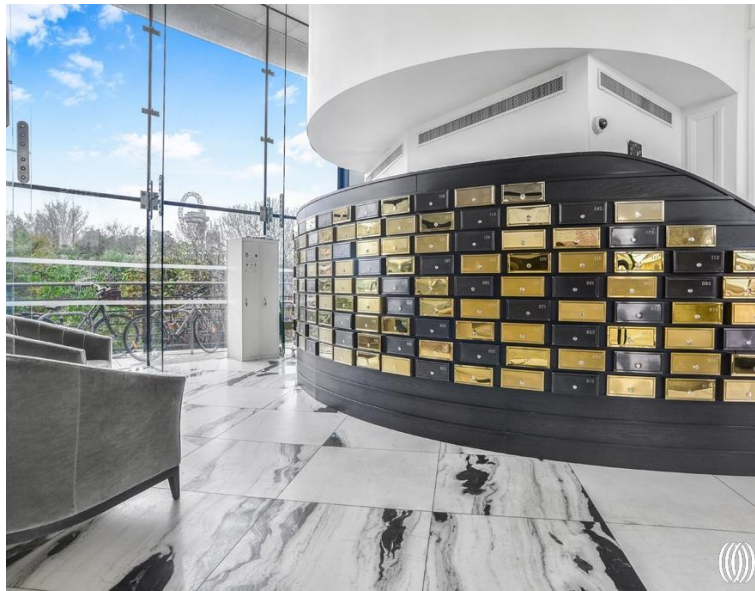


# High Street, London E15

£535,000 Leasehold







## Description

Situated in the heart of Stratford's vibrant regeneration zone, River Heights represents contemporary urban living at its finest. This two-bedroom apartment occupies an elevated position, delivering expansive views across the evolving East London skyline and beyond.

The apartment features a spacious open-plan reception and kitchen area that extends onto a north-facing balcony, creating an ideal entertaining space flooded with natural light. The thoughtfully designed layout includes two double bedrooms, with the principal bedroom benefiting from an east-facing balcony that captures morning sunlight. Two modern bathrooms serve the accommodation, ensuring comfort and convenience for residents and guests alike.

River Heights offers an enviable lifestyle proposition with 24-hour concierge service, a well-equipped residents' gym, and the security of underground parking. The building's premium amenities complement the apartment's contemporary specification, creating a truly low-maintenance living experience.

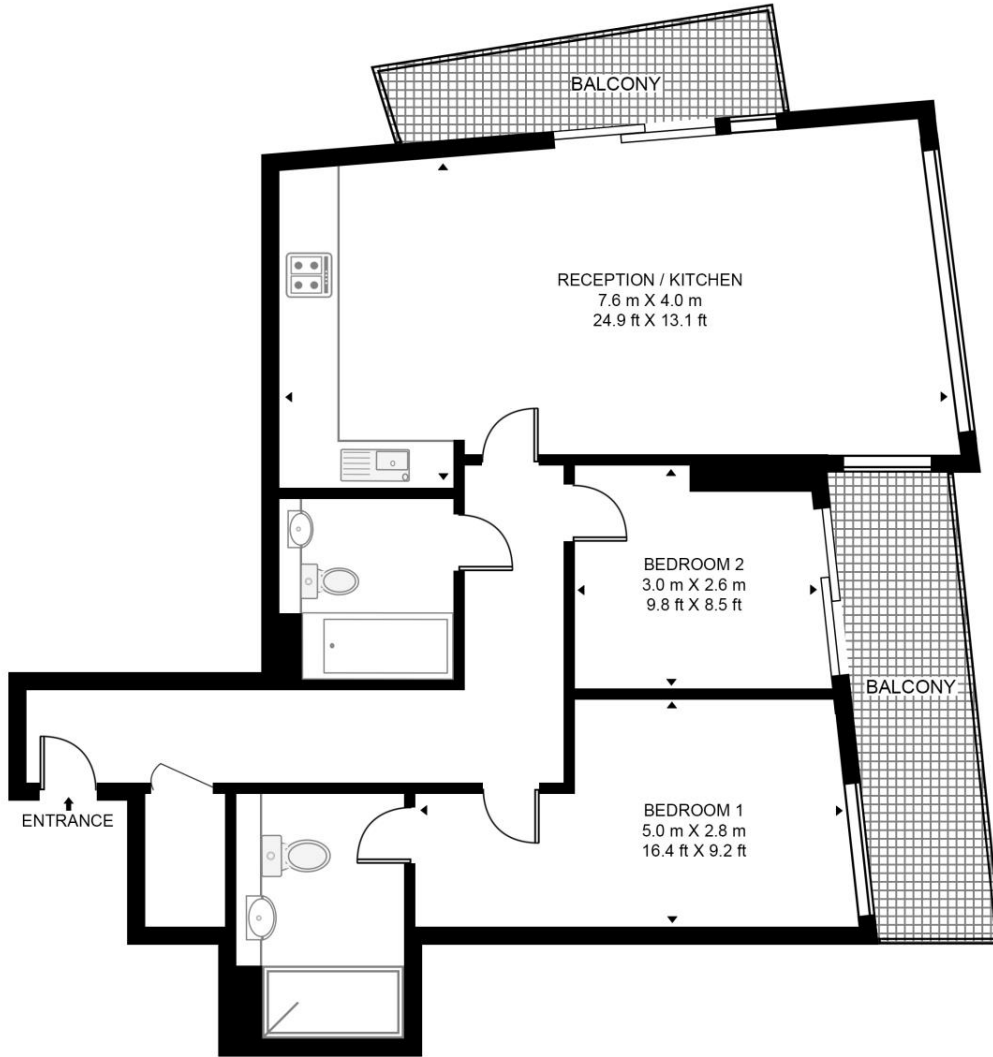
- Two generous balconies
- Sweeping elevated views
- Concierge service
- Residents gym
- Underground parking space
- Two double bedrooms
- Two modern bathrooms
- Approximately 752 sq ft
- Light-filled interiors
- Stratford connectivity

# Floorplan

752 sq ft | 70 sq m

## RIVER HEIGHTS

APPROXIMATE GROSS INTERNAL FLOOR AREA 752 SQ.FT (69.9 SQ.M)



## TWENTY FIFTH FLOOR



This floor plan has been defined by the RICS Code of Measurement. This floor plan and all others are for approximate representative purposes only and upon usage is agreed to as such by the client.  
WWW: [hdvirtualart.com](http://hdvirtualart.com) | TEL: 0203.974.1567 | EMAIL: [info@hdvirtualart.com](mailto:info@hdvirtualart.com)

Stratford  
5 Station Street,  
London E15 1DA  
+4420 3147 1500  
[Lettingsstratford@eu.jll.com](mailto:Lettingsstratford@eu.jll.com)

*Urban living, your way.*

[jll.co.uk/residential](http://jll.co.uk/residential)

© 2019 Jones Lang LaSalle IP, Inc. All rights reserved. All information contained herein is from sources deemed reliable; however, no representation or warranty is made to the accuracy thereof.

