



Two bedroom ground floor apartment in a village location

exclusive to

**SAUNDERS**

[richardsaunders.co.uk](http://richardsaunders.co.uk)

# Tudor Lodge Kingswood KT20

London 17 Miles  
Kingswood Village And Station 2 Minutes' Walk  
London By Rail 40 minutes  
M25 (Junction 8) 3 miles

All times and distances are approximate

Available now this beautifully presented two bedroom ground floor apartment situated within a gated development and just a few minutes from the village and station. Additional benefits include full use of the communal gardens, allocated parking and garage.

Fibre To The Cabinet Broadband  
Gas, water, electricity, broadband and council tax utility bills are the tenants responsibility  
We hold our deposits in a TDS scheme  
The information is correct to the best of our knowledge on marketing this property



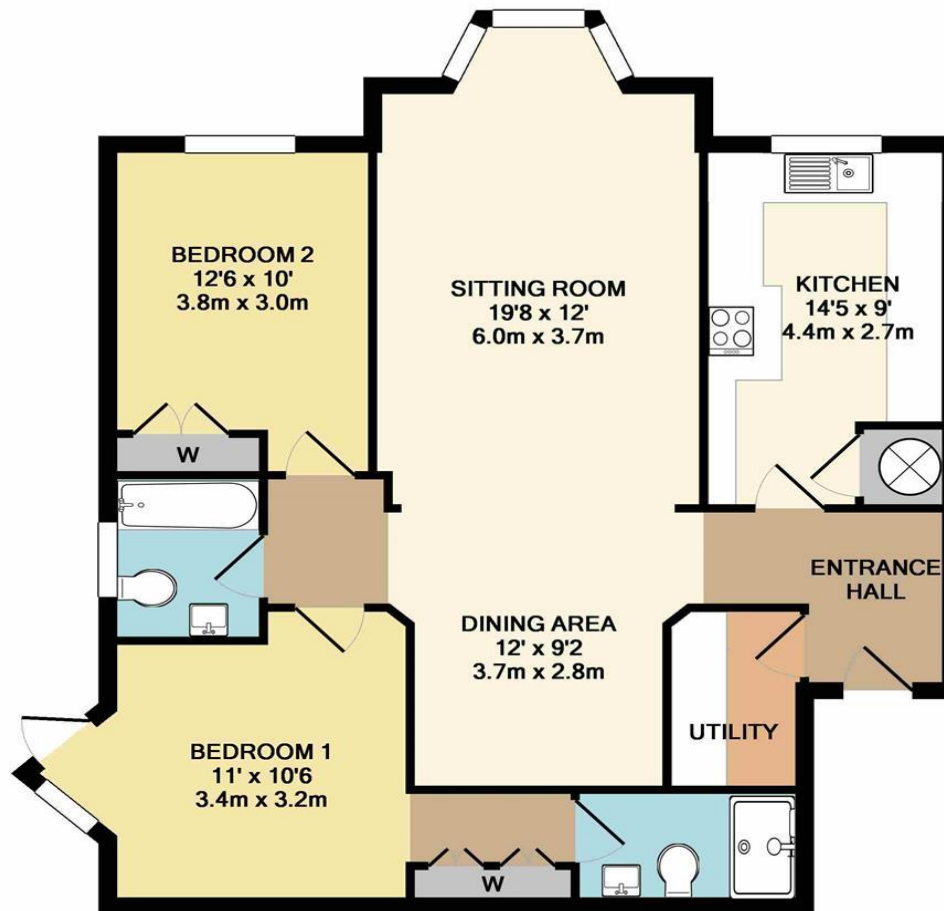
To Let £1,900pcm



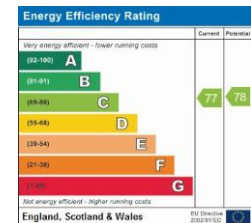


Available Now | Two Bedroom | Modern Living | Unfurnished | Close To Kingswood Station | Allocated Parking For One Vehicle | Garage





TOTAL APPROX. FLOOR AREA 916 SQ.FT. (85.1 SQ.M.)  
 Made with Metropix ©2017



discover more at [richardsaunders.co.uk](http://richardsaunders.co.uk)



**IMPORTANT NOTICE TO PURCHASERS:** We endeavour to make our sales particulars accurate and reliable, however, they do not constitute or form part of an offer or any contract and none is to be relied upon as statements of representation or fact. The services, systems and appliances listed in this specification have not been tested by us and no guarantees as to their operating ability or efficiency are given. All measurements have been taken as guide to prospective buyers only, and are not precise. If you require clarification or further information on any points, please contact us, especially if you are travelling some distance to view.

Viewing  
 Please call us to arrange  
 a viewing appointment

1 Waterhouse Lane  
 Kingswood  
 01737 360000

2 High Street  
 Banstead  
 01737 363333

Residential Lettings  
 All Areas  
 01737 370700

