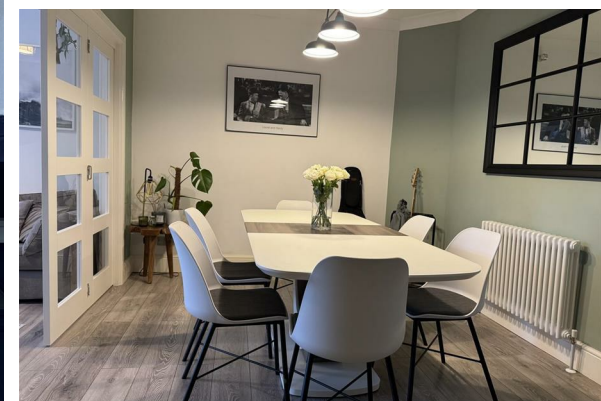




TO LET

76 Rochester Drive, Westcliff-On-Sea, SS0 0NL

£1,800



Brown & Brand



### Directions

### THE PROPERTY

Nestled in the charming area of Westcliff-On-Sea, this delightful end-terrace house on Rochester Drive offers a perfect blend of comfort and convenience. Built in 1935, this three-bedroom family home spans an impressive 1,292 square feet, providing ample space for both relaxation and entertaining.

Upon entering, you will find two generously sized reception rooms that create a warm and inviting atmosphere, ideal for family gatherings or quiet evenings. The ground floor boasts spacious living areas, ensuring that every member of the family can enjoy their own space. The well-appointed kitchen complements the living areas, making it a practical hub for daily life.

Outside, the private rear garden offers a tranquil retreat, perfect for enjoying sunny afternoons or hosting barbecues with friends. Additionally, off-street parking for two vehicles adds to the convenience of this lovely home.

Situated close to the A127, this property benefits from excellent transport links, making it easy to access nearby amenities and attractions.

Available Mid January 2026, EPC D and Council Tax Band C

### SITUATION