



Monson Way, Oundle
£450,000 Freehold

**Sharman
Quinney**

Key Features



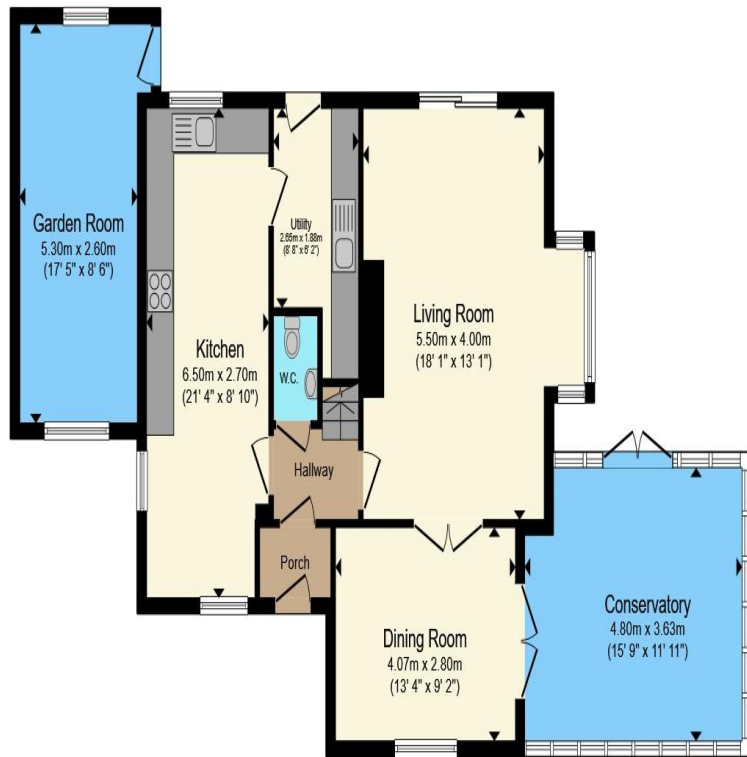
- Large corner plot rear garden
- Converted garage with power
- Sought after area of Oundle
- Driveway for multiple cars
- Large kitchen area with breakfast bar and integrated appliances

This beautifully presented four-bedroom detached home in Oundle offers spacious and versatile living throughout, beginning with a welcoming entrance porch that leads into a hallway with a conveniently positioned cloakroom. The kitchen is a standout feature, complete with a breakfast bar, integrated appliances, and an abundance of natural light from windows at either end, it flows seamlessly into a useful utility room with a sink and access to the rear garden. The lounge enjoys a charming bay window and connects to the dining room, which in turn opens into a large conservatory featuring a solid roof with spotlights and a brick-built foundation, making it perfect for year-round use. Upstairs, the property provides four well-proportioned bedrooms, including a master bedroom with built-in over-bed units and a private en-suite that has recently benefited from the

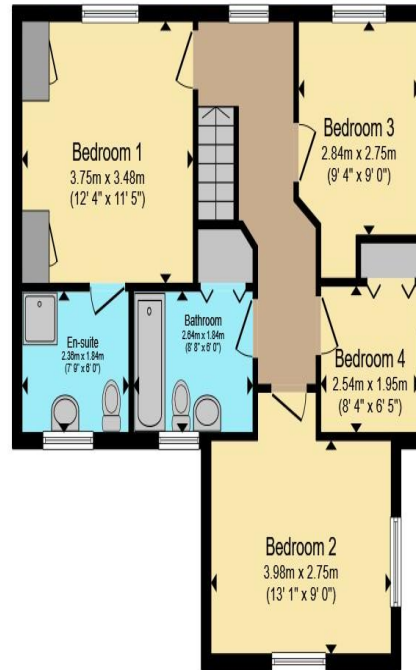


installation of a new extractor fan, along with a family bathroom serving the remaining rooms. Outside, the home sits on a generous corner-plot garden with a patio area and lawn, offering ample space for relaxation and entertaining, while to the front there is a driveway providing parking for multiple vehicles. The converted garage, equipped with power, adds valuable extra space and functions perfectly as a home office or games room.





Ground Floor



First Floor

Total floor area 157.9 m² (1,700 sq.ft.) approx

This floor plan is for illustrative purposes only. It is not drawn to scale. Any measurements, floor areas (including any total floor area), openings and orientation are approximate. No details are guaranteed, they cannot be relied upon for any purpose and they do not form part of any agreement. No liability is taken for any error, omission or misstatement. A party must rely upon its own inspection(s). Powered by www.propertybox.io

**Sharman
Quinney**

To view this property call Sharman Quinney on:
01832 274567

Selling your property?

Contact us to arrange a **FREE** home valuation.

 01832 274567

 The Old Town Hall Market Place, Oundle, Peterborough, Cambridgeshire, PE8 4BQ

 oundle@sharmanquinney.co.uk

 www.sharmanquinney.co.uk



 SCAN ME



Sharman Quinney Holdings Limited is registered in England and Wales under company number 4174227, Registered Office is Cumbria House, 16-20 Hockliffe Street, Leighton Buzzard, Bedfordshire, LU7 1GN. VAT Registration Number is 500 2481 05.

1: These particulars do not constitute part or all of an offer or contract. 2: The measurements indicated are supplied for guidance only and as such must be considered incorrect. 3: Potential buyers are advised to recheck the measurements before committing to any expense. 4: Sharman Quinney has not tested any apparatus, equipment, fixtures, fittings or services and it is the buyers interests to check the working condition of any appliances. 5: Sharman Quinney has not sought to verify the legal title of the property and buyers must obtain verification from their legal representative. 6: Intending purchasers will be asked to produce identification documentation at a later stage and we would ask your co-operation in order that there will be no delay in agreeing the sale. Ref: OUN202823 - 0003

