

7 Lymans Road, Guide Price £550,000

4 2 3

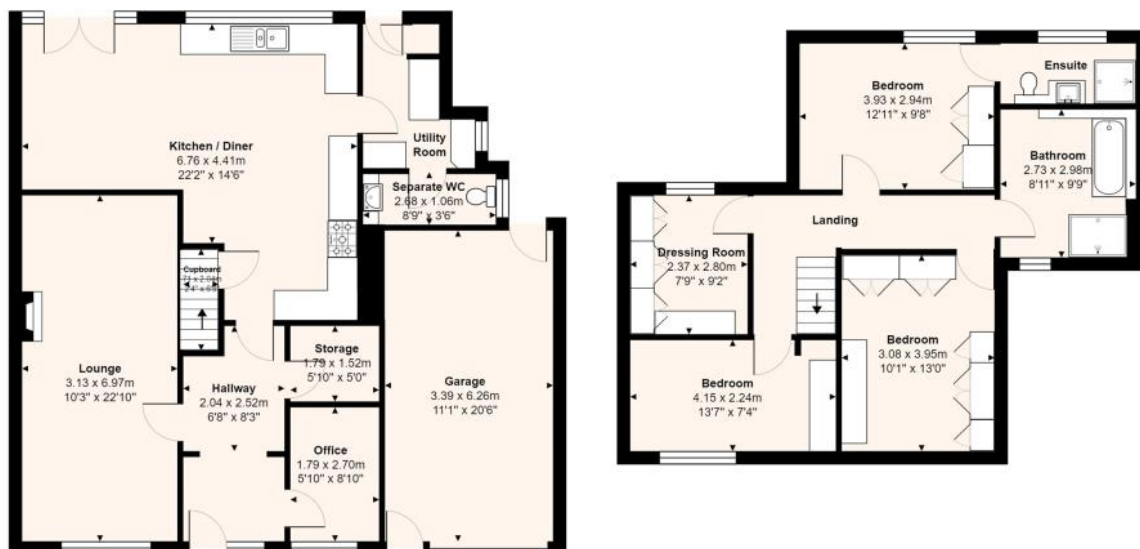


A wonderfully spacious and beautifully presented family home, positioned on a generous plot and ideally located within easy walking distance of Arlesey mainline station. Having been thoughtfully extended and improved, this property now offers a superb amount of versatile accommodation, perfect for modern family living.

Key Features

- Driveway and garage with power and lighting
- Utility room and ground-floor cloakroom
- Walk-in shoe/boot cupboard
- Summer house with power and light
- Study/home office
- Spacious open-plan kitchen/breakfast room
- Master bedroom with en-suite
- Large rear garden with hot tub
- Double-storey extension providing generous living space
- Walking distance to Arlesey train station

7 Lymans Road, SG15 6TE



Total Area: 166.3 m² ... 1790 ft²

All measurements are approximate and for display purposes only