



Pinfold Road, SW16

£2,750 PCM

A beautifully presented three bedroom split level flat, spanning over 1200 sq foot, located on a highly desirable street in between Streatham Hill and Streatham train stations.

- Three Double Bedrooms
- Two Bathrooms
- Open Plan Kitchen Reception
- Bi-Folding Doors
- Private Rear Garden
- Split Level

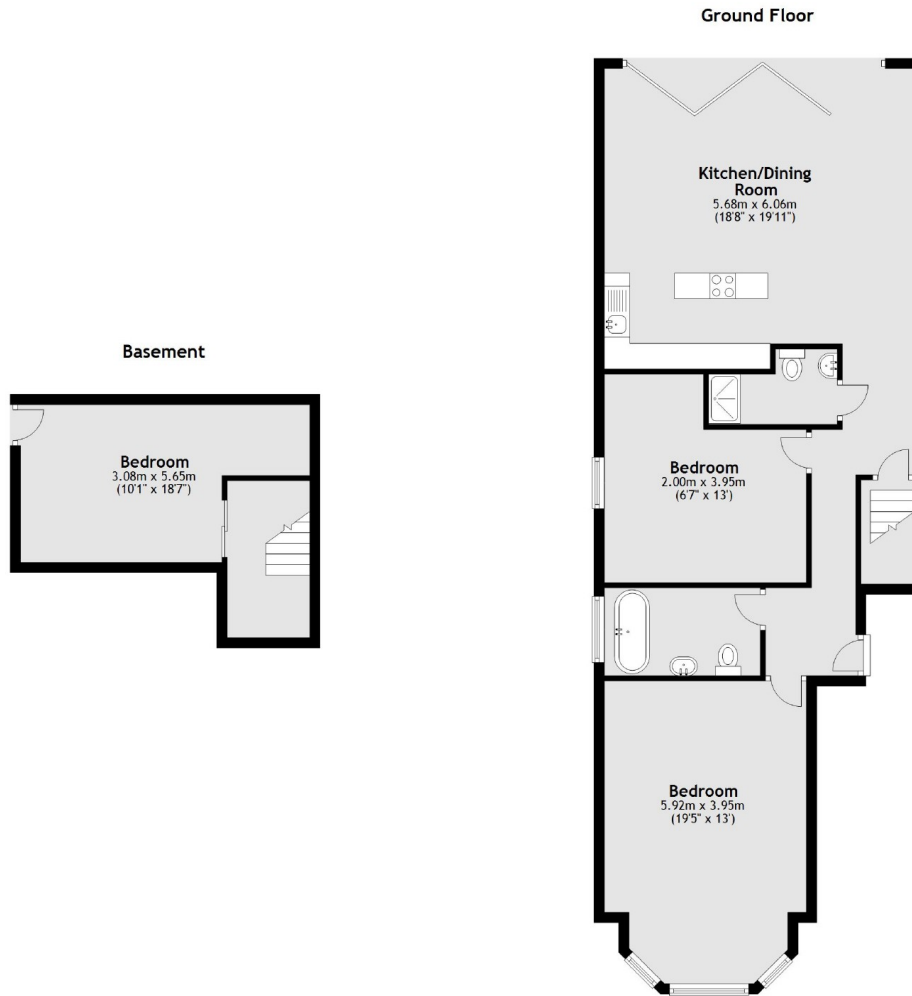
For further information on the costs associated with renting a property, please pop into our office or visit our website.



Pinfold Road is a quiet side road situated off Streatham High Road within easy access to both Streatham and Streatham Hill train stations, providing quick transport links to London Bridge, Victoria and the Thameslink line. There are also numerous independent pubs, bars, coffee shops and restaurants nearby, alongside several supermarkets, gyms and a library.







Total area: approx. 111.8 sq. metres (1202.9 sq. feet)

Jacksons Streatham
1-3 De Montfort Parade
Streatham High Road
Streatham
London
SW16 1BU

Energy Rating: We aim to make our particulars both accurate and reliable. However they are not guaranteed; nor do they form part of an offer or contract. If you require clarification on any points then please contact us, especially if you're traveling some distance to view. Please note that appliances and heating systems have not been tested and therefore no warranties can be given as to their good working order.