

**Shaw  
& Co**  
ESTATE  
AGENTS

**£330,000**

**Hunting Place**

Hounslow, TW5 0NP

**Shaw  
& Co**

## PROPERTY SUMMARY

Shaw & Co present this gorgeous two-bedroom first floor flat in Heston. Located one of Heston's most sought after estates, the property benefits from an allocated parking space, as well as lift access. The property boasts two double bedrooms, a large open plan kitchen and lounge and a family bathroom.

Conveniently located to various local conveniences such as supermarkets, shops, cafes, restaurants, and ample green spaces. The location benefits from excellent transportation options, including frequent bus services and excellent road connections. Hounslow West, Hounslow Central, and Osterley tube stations are all situated a brief distance from the property, providing easy access to various parts of the city.

Additionally, the surrounding area boasts esteemed educational institutions like Westbrook Primary School and Springwell School.

Tenure: Leasehold 115 Years  
Annual Service Charge: £3,300  
Annual Ground Rent: £250

2



2



1

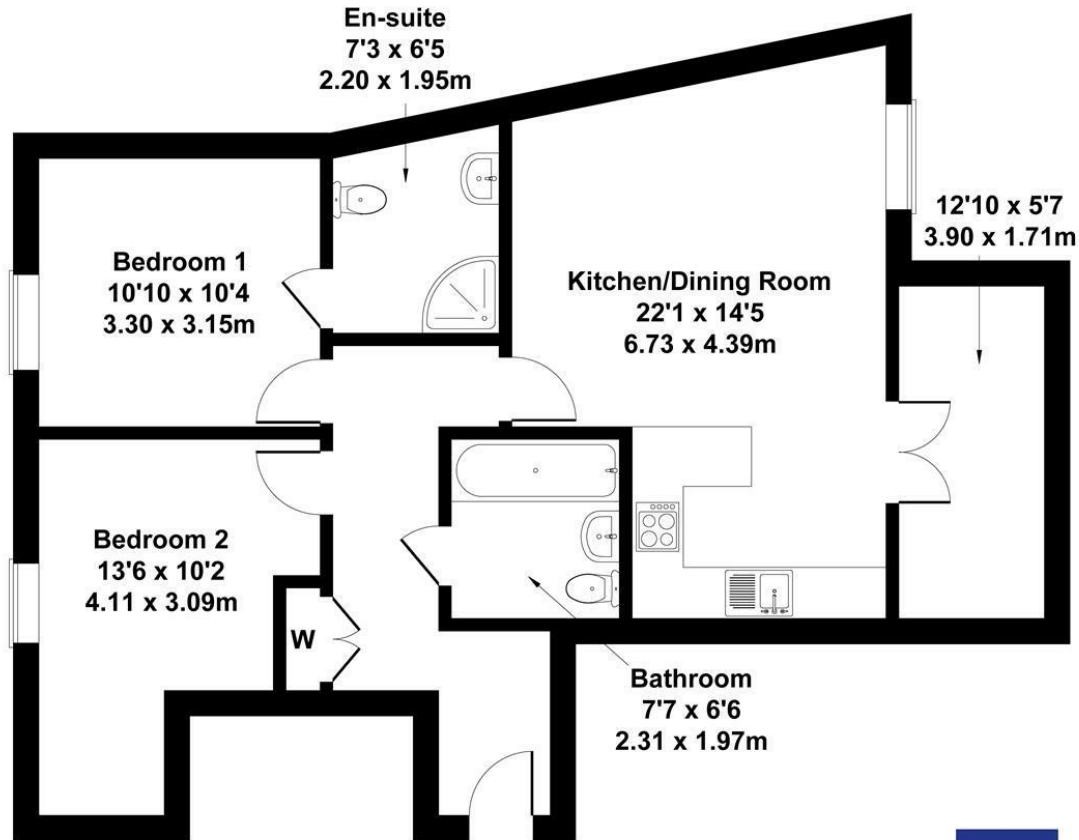


Shaw  
& Co



# Mayfair Court

Approximate Gross Internal Area  
797 sq ft - 74 sq m



Not to Scale. Produced by The Plan Portal 2025  
For Illustrative Purposes Only.



## LOCAL AUTHORITY

Hounslow

## TENURE

Leasehold

## COUNCIL TAX BAND

D

## VIEWINGS

By prior appointment only

Energy Efficiency Rating		Current	Potential
Very energy efficient - lower running costs			
(92 plus) A			
(81-91) B		86	
(69-80) C			
(55-68) D			
(39-54) E			
(21-38) F			
(1-20) G			
Not energy efficient - higher running costs			
England & Wales		EU Directive 2002/91/EC	



Agents Note: Whilst every care has been taken to prepare these particulars, they are for guidance purposes only. All measurements are approximate and are for general guidance purposes only and whilst every care has been taken to ensure their accuracy, they should not be relied upon and potential buyers/tenants are advised to recheck the measurements

**Shaw  
& Co**

ESTATE  
AGENTS

### OFFICE ADDRESS

10 Central Parade  
New Heston Road  
Heston  
Middlesex  
TW5 0LH

### OFFICE DETAILS

0208 570 7258  
heston@shawandcoestates.com