

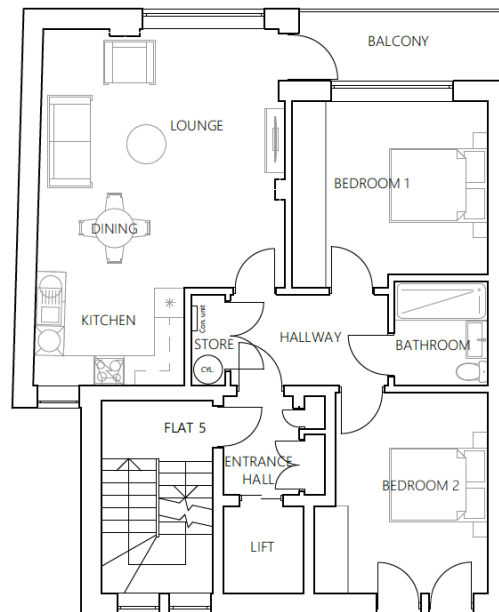
Cynthia Ikeda Apartments, London, SE26 5HF

Guide Price £500,000

🛏️ 2 🚿 1 🚿 1



- Please Quote HM1127 For All Enquiries. Completion Q2 2026
- Guide Price £500,000-£550,000
- CGIs are used for illustrative purposes and are subject to change as development progresses.
- Two-Bedroom Apartment
- Share Of Freehold
- Private Balcony
- 2,200 Square Feet Of Elegantly Designed Communal Areas
- Triple-Glazed Windows. Energy-Efficient Heating And Ventilation Systems
- Located Half A Mile From Sydenham Station, A 12/15-Minute Walk, With National Rail Services To London Bridge In 15 Minutes And The Overground To Canada Water In 16 Minutes
- Meticulously Designed To Blend Style With Accessibility. Step-Free Entry. Suitable For Individuals With Specific Access Needs



Flat 5 Layout Plan
Scale 1:100

For all enquiries, please reference HM1127. Guide Price £500,000–£550,000. Chain Free. Set within the newly constructed Cynthia Ikeda Apartments, this exceptional residence offers contemporary living with a private balcony and access to beautifully landscaped communal gardens extending to approximately 2,200 sq. ft.