



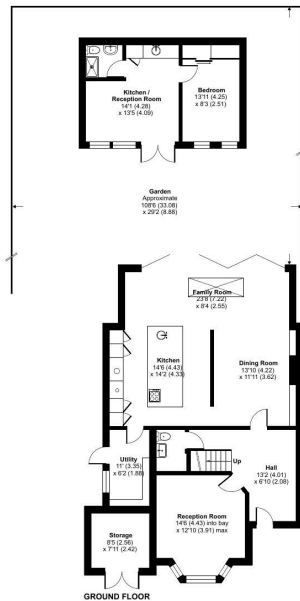
ASKING PRICE

£1,100,000

Sefton Road

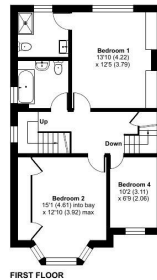
Orpington, BR5 1RG

EPC RATING: D COUNCIL TAX BAND: G



Sefton Road, Petts Wood, Orpington, BR5

Approximate Area = 1887 sq ft / 175.3 sq m
 Outbuilding = 67 sq ft / 6.2 sq m
 Annexe = 308 sq ft / 28.6 sq m
 Total = 2262 sq ft / 210.1 sq m
 For identification only - Not to scale



Floor plan produced in accordance with RICS Property Measurement 2nd Edition, Incorporating International Property Measurement Standards (IPMS2 Residential). © nichecom 2026. Produced for Withers & Curling. REF: 1475763

Sinclair Hammelton



Energy Efficiency Rating		Current	Potential
Very energy efficient - lower running costs			
(92 plus)	A		
(81-91)	B		
(69-80)	C		
(55-68)	D		
(39-54)	E		
(21-38)	F		
(1-20)	G		
Not energy efficient - higher running costs			
England & Wales		65	81
		EU Directive 2002/91/EC	



Agents Note: Whilst every care has been taken to prepare these particulars, they are for guidance purposes only. All measurements are approximate and are for general guidance purposes only and whilst every care has been taken to ensure their accuracy, they should not be relied upon and potential buyers/tenants are advised to recheck the measurements

Sinclair Hammelton

OFFICE ADDRESS
 1 Chatsworth Parade
 Kent
 BR5 1EF

OFFICE DETAILS
 01689 806 770
 infopw@sinclairhammelton.co.uk
<https://www.sinclairhammelton.co.uk>
 for-sale-in-petts-wood/