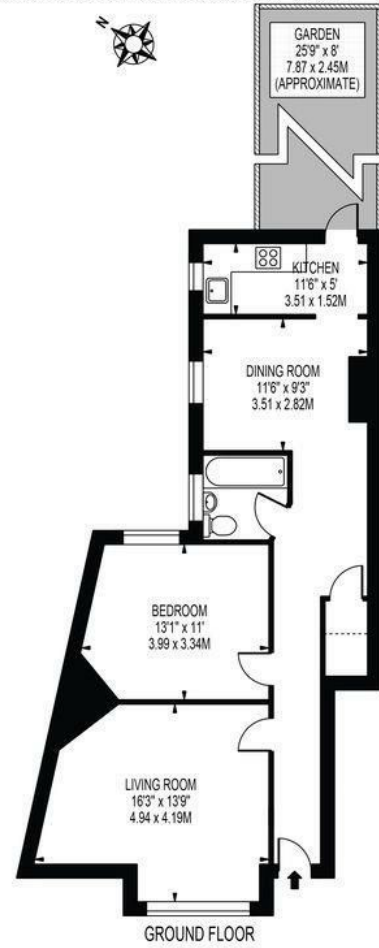
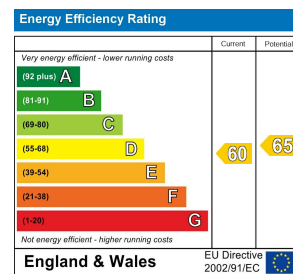


KINGSTON ROAD  
APPROXIMATE GROSS INTERNAL FLOOR AREA: 673 SQ FT - 62.54 SQ M



GROUND FLOOR  
FOR ILLUSTRATION PURPOSES ONLY

THIS FLOOR PLAN SHOULD BE USED AS A GENERAL OUTLINE FOR GUIDANCE ONLY AND DOES NOT CONSTITUTE IN WHOLE OR IN PART AN OFFER OR CONTRACT. ANY INTENDING PURCHASER OR LESSEE SHOULD SATISFY THEMSELVES BY INSPECTION, SEARCHES, ENQUIRIES AND FULL SURVEY AS TO THE CORRECTNESS OF EACH STATEMENT. ANY AREAS, MEASUREMENTS OR DISTANCES QUOTED ARE APPROXIMATE AND SHOULD NOT BE USED TO VALUE A PROPERTY OR BE THE BASIS OF ANY SALE OR LET.



£1,500 :

One Bedroom Ground Floor Flat

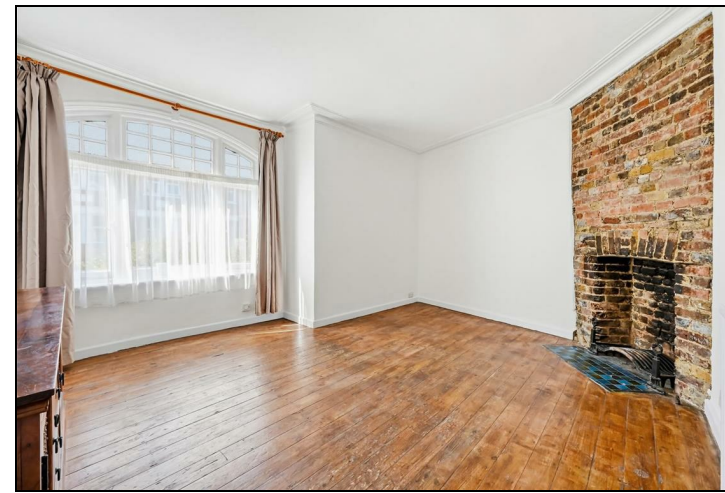
ONE BEDROOM ground floor 'period' style maisonette with PRIVATE GARDEN situated just 0.2 miles walk from WIMBLEDON CHASE train station and 0.6 miles from RAYNES PARK station. This LOVELY property consists of a LARGE bedroom, SPACIOUS lounge, fitted bathroom and a well kept kitchen with direct access to a small PRIVATE garden.

EPC rating band D, Council tax band C.



### SPECIFICATION:

- Double Bedroom
- Ground Floor
- Private Garden
- 0.6 miles from Raynes Park Stn
- Unfurnished
- One months rent in advance
- Damages deposit = five weeks rent
- No Agency Fees
- Video Available
- Council Tax Band C



**Reception**

**Bedroom**

**Bedroom**

**Kitchen**

