



CLARENDON ROAD, W11

£500,000

- Prime location
- Raised ground floor
- High ceilings
- Communal garden access
- Feature fireplaces
- Period conversion

@marshandparsons
marshandparsons.co.uk

MARSH &
PARSONS



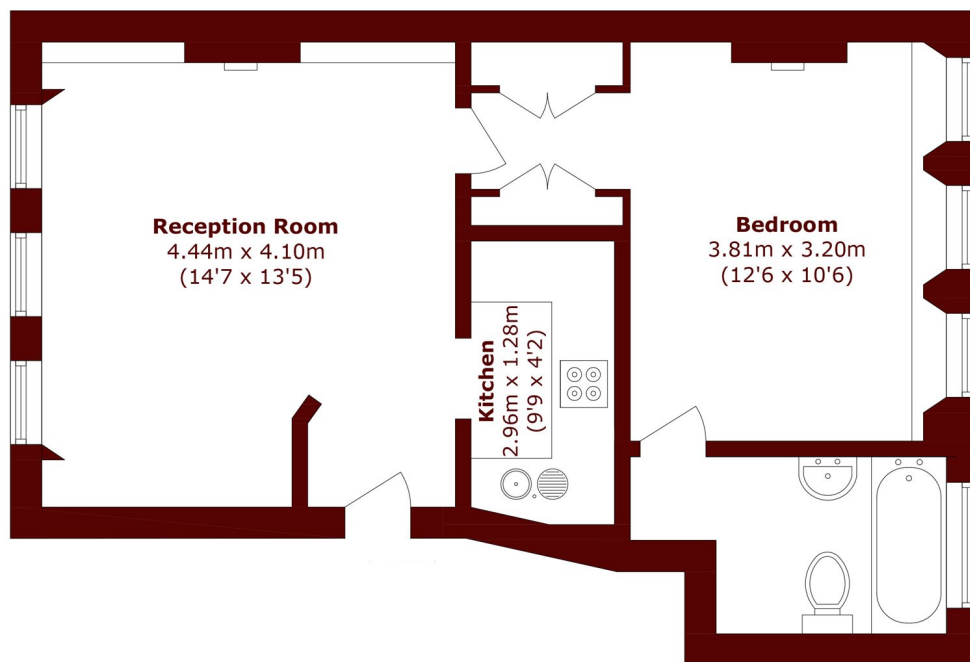
ABOUT THE PROPERTY

A charming one bedroom period conversion on the raised ground floor of a beautiful, stucco fronted property. This well-proportioned apartment offers high ceilings, large windows, feature fireplaces, substantial storage and access to a stunning communal garden.

Clarendon Road is perfectly located for the many first class amenities of Holland Park and Notting Hill with close access to Holland Park (Central Line) tube and Ladbroke Grove (Hammersmith & City and Circle Line) tube. Driving routes out of London are easily accessed via the A40 and the A4.



STEP INSIDE CLARENDON ROAD



Total area (approx.): 41.5 sq. m (446.7 sq. ft)

Holland Park
020 7605 6890

Energy Rating: C We aim to make our particulars both accurate and reliable. However, they are not guaranteed; nor do they form part of an offer or contract. If you require clarification on any points then please contact us, especially if you're traveling some distance to view. Please note that appliances and heating systems have not been tested and therefore no warranties can be given as to their good working order

**MARSH &
PARSONS**