



## CHEPSTOW CRESCENT, W11

£2,275 per month

Spacious one bedroom apartment in the heart of Notting Hill on this sought after tree lined road.

One bedroom

Private terrace

Wonderful Notting Hill location Heating & hot water included

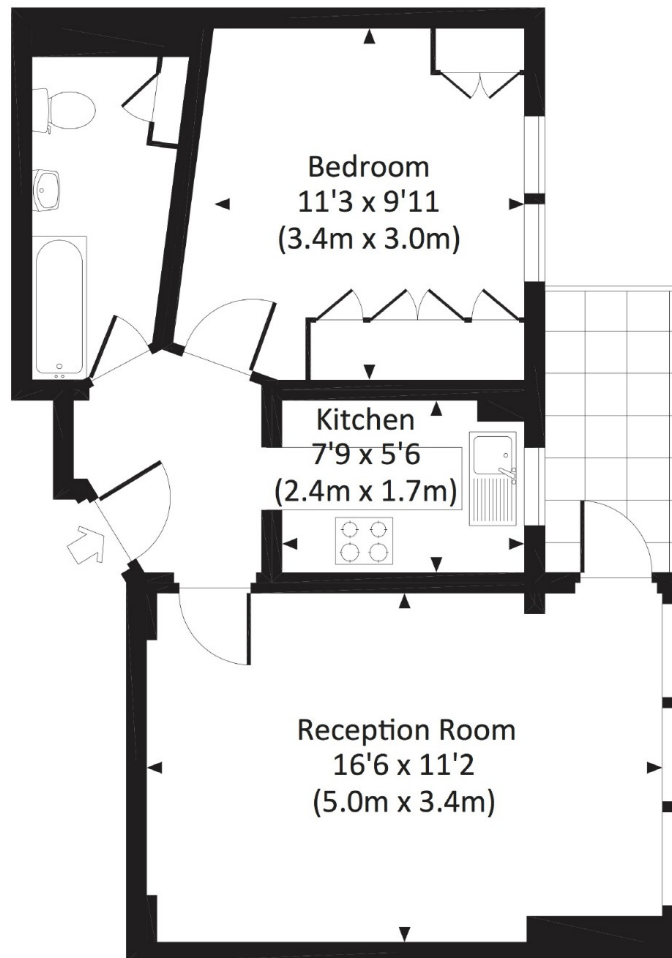
Separate kitchen

EPC - C

# STEP INSIDE CHEPSTOW CRESCENT

## CHEPSTOW COURT, W11

Approx. gross internal area  
454 Sq Ft. / 42.2 Sq M.



GROUND FLOOR



All measurements have been made in accordance with RICS Code of Measuring Practice which are approximate only and only for illustrative purposes. For the avoidance of doubt, Dowling Jones Design shall not be liable for any reliance on these measurements. © 2016 www.dowlingjones.com 020 7610 9933

Notting Hill  
020 7313 6910

Energy Rating: C We aim to make our particulars both accurate and reliable. However, they are not guaranteed; nor do they form part of an offer or contract. If you require clarification on any points then please contact us, especially if you're traveling some distance to view. Please note that appliances and heating systems have not been tested and therefore no warranties can be given as to their good working order

MARSH &  
PARSONS