



Marsham Street, SW1P

£1,200 Per week

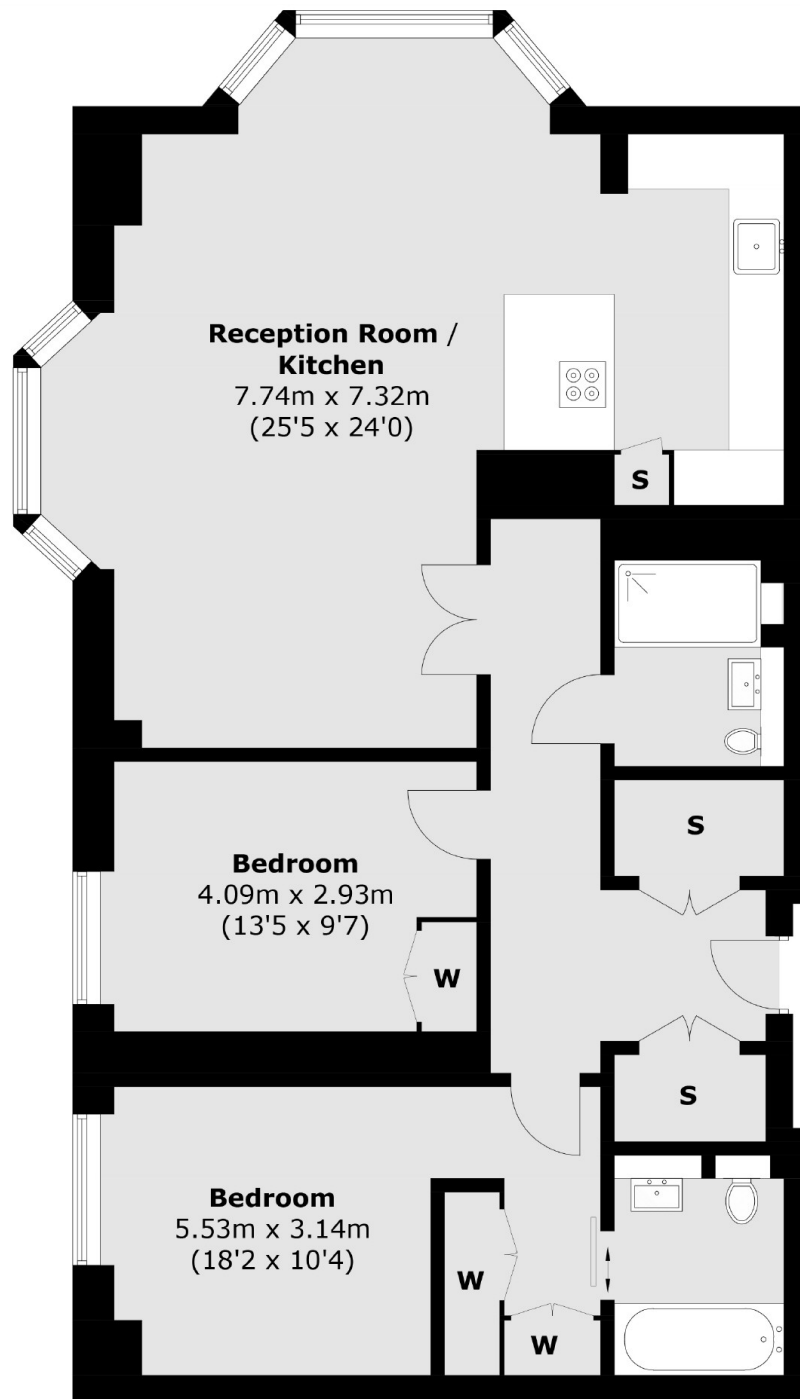
A superb two double bedroom, two bathroom apartment finished to a high specification modern style, within a newly built development with concierge service.

Drake House is situated at the cross roads of Horseferry Road and Marsham Street, giving it a great position in central London. There are lots of convenient shops around, including a selection of supermarkets and there are lots of local restaurants and pubs too for convenience.

Features

- Two Bedrooms
- Two Bathrooms
- 24hr Concierge
- Newly Built
- Wood Floors
- Secure Parking

Marsham Street,
London, SW1P



Second Floor

Total area (approx.): 105.0 sq. m (1,130.2 sq. ft)

Dexters

Pimlico
42 Denhigh Street
London
SW1V 2ER

Lettings
020 7976 5200

Energy Rating: B. We aim to make our particulars both accurate and reliable. However they are not guaranteed; nor do they form part of an offer or contract. If you require clarification on any points then please contact us, especially if you're traveling some distance to view. Please note that appliances and heating systems have not been tested and therefore no warranties can be given as to their good working order.

 **RICS** | Regulated
Estate Agent
and Letting Agent

dexters.co.uk