

Cotswold Road

WINDMILL HILL

APPROXIMATE FLOOR AREA
112.3 SQM / 1209 SQFT



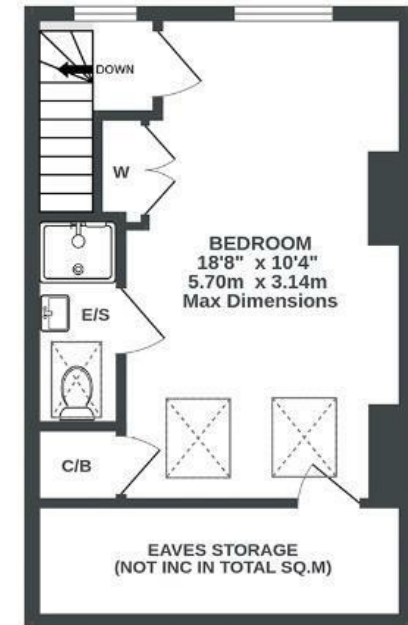
GROUND FLOOR
545 sq.ft. (50.6 sq.m.) approx.



1ST FLOOR
413 sq.ft. (38.4 sq.m.) approx.



2ND FLOOR
251 sq.ft. (23.3 sq.m.) approx.



Boardwalk

Cotswold Road

WINDMILL HILL, BRISTOL

£

£535,000



BS3 4PH

zzz

3 Bedrooms



2 Bathrooms

"I've taken great pride in lovingly restoring the original Victorian features of this home. It's been a sanctuary for me – bright and spacious. I'm going to miss it hugely. The open plan kitchen and living areas have hosted many great parties, it's perfect for having people round. In the summer I regularly wake up in the loft room to hot air balloons overhead through the velux windows. More recently, in the winter, I've been enjoying waking up to beautiful sunrises from my bedroom window. The street has a strong sense of community, I know all my neighbours well and everyone is super friendly."

