



Chelsea Cloisters, SW3

£250,000

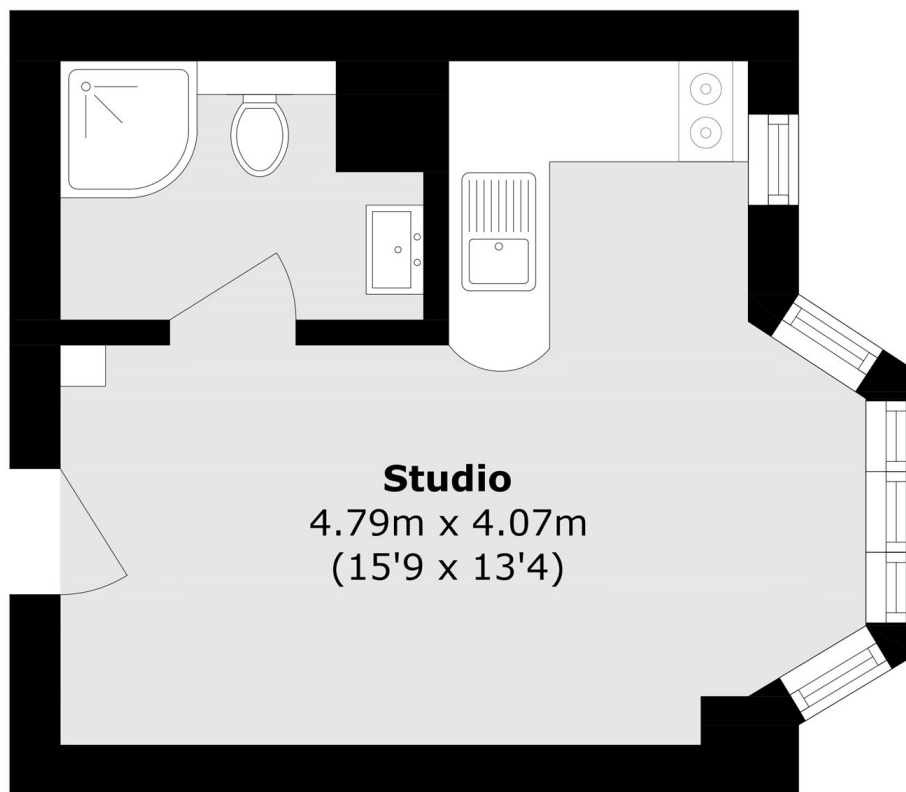
A bright, unmodernised apartment located on the fourth floor of a portered building. This property would prove to be a great long term investment or London base.

Chelsea Cloisters is located between Sloane Square and South Kensington tube stations. The world famous shops and restaurants the King's Road have to offer are also within walking distance.

Features

- Lift
- Portered Building
- Unmodernised
- Studio Apartment
- Popular Location
- Leasehold

Chelsea Cloisters, London, SW3



Fourth floor

Total area (approx.): 17.8 sq. m (191.5 sq. ft)