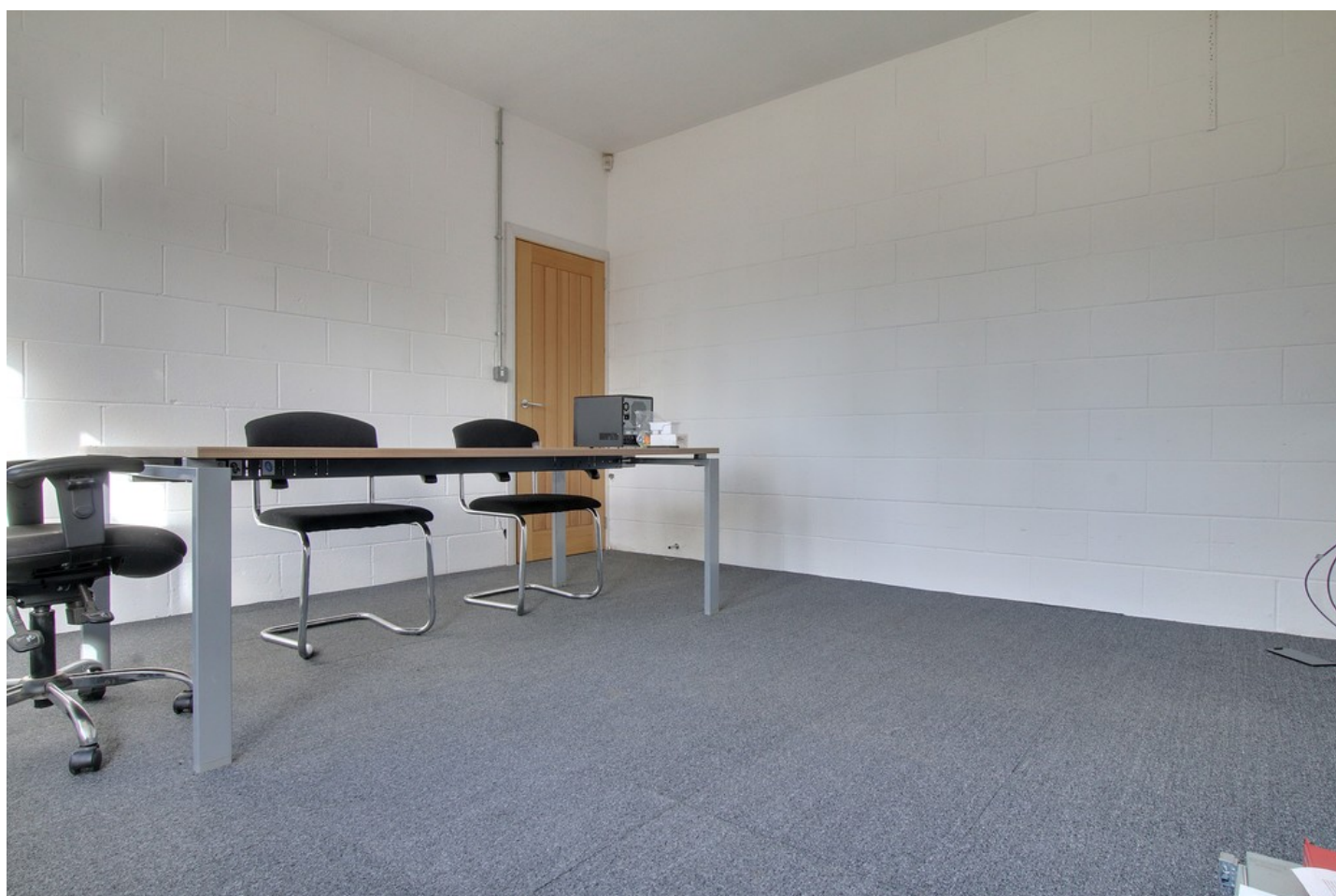


£8,500 pa

Unit 8-9 The Quadrant, Primrose Hill, Doddington,  
Cambridgeshire PE15 0SU



To arrange a viewing call us now on 01354 694900

Deposit £2,125

Nicely presented purpose-build  
offices with kitchen area and wc.

Parking allocated for 4 vehicles

Available to rent immediately

Ground Floor  
Approx. 58.0 sq. metres (624.6 sq. feet)

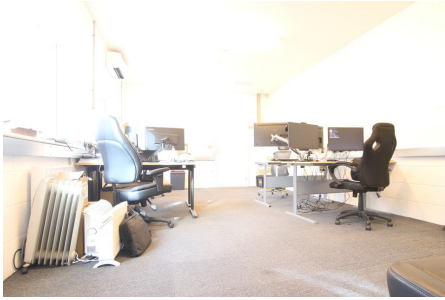


Total area: approx. 58.0 sq. metres (624.6 sq. feet)

**ellis winters**  
sales & lettings since 2001

# £8,500 pa

Unit 8-9 The Quadrant, Primrose Hill, Doddington,  
Cambridgeshire PE15 0SU



Nicely present purpose-built offices. With kitchen area and WC. Parking allocated for 4 vehicles.

Office 2  
7.19m (23'7") x 3.97m (13')

Kitchen Area  
3.97m (13') x 3.18m (10'5")

Office 1  
4.01m (13'2") x 3.97m (13')



WC

Electric heating and air conditioning

Energy rating A  
Fenland District Council Tax band TBC

Tenant to pay £250 + VAT administration costs

Tenant to pay £600 + VAT Commercial Lease

Tenant Reference and Credit Checks

As part of our standard pre-tenancy process, we carry out credit and reference checks on all prospective tenants. These checks are essential to ensure suitability for the tenancy and are conducted in accordance with relevant data protection laws (GDPR). The cost of these checks is fully covered by Ellis Winters, and no charge is passed on to the applicant.

Disclaimer

All property details, photographs, floorplans, and other marketing materials produced by Ellis Winters are for general guidance only and do not form part of any contract. While we strive for accuracy, measurements, descriptions, and other information are provided in good faith but should be independently verified. We recommend that prospective tenants conduct their own due diligence before making any decisions.

ellis winters 20 Market Hill, Chatteris, Cambridgeshire, PE16 6BA

Tel: 01354 694900 Email: [info@elliswinters.co.uk](mailto:info@elliswinters.co.uk) [www.elliswinters.co.uk](http://www.elliswinters.co.uk)

**ellis winters**  
sales & lettings since 2001

