



## Hillreach, SE18

£325,000

This beautifully presented two bedroom apartment is situated on the sought-after Hillreach in Woolwich, offering bright and spacious living with a modern finish throughout. Located on the first floor of a well-maintained period conversion, the property benefits from high ceilings, large sash windows and a well-proportioned layout. The large kitchen and dining area is perfect for entertaining, featuring a sleek, contemporary kitchen with integrated appliances and space for dining. The generous double bedroom offers plenty of natural light, while the stylish bathroom has been finished to a high standard with modern fittings. Further benefits include ample storage, gas central heating and loft space which offers potential to extend (STPP). Ideal for first-time buyers or

### Features

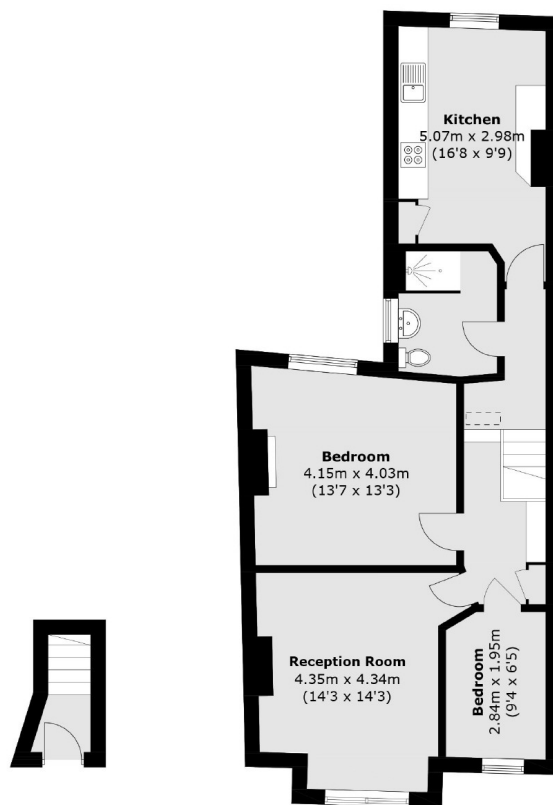
- Spacious First Floor Conversion
- Two Bedroom
- Large & Bright Reception Room
- Close To Woolwich
- Large Kitchen/Diner
- Refurbished Bathroom



**Hillreach, SE18**



# Hillreach, London, SE18



**Ground Floor**

**First Floor**

Total area (approx.): 70.3 sq. m (756.7 sq. ft)