



39 Kentwood Close Tilehurst, RG30 6DH

Guide price £340,000 Freehold



VP - NO ONWARD CHAIN.

This three bedroom end of terrace house presents an excellent opportunity for families and professionals alike. With three well-proportioned bedrooms, this property offers ample space for comfortable living. The ground floor features a welcoming entrance hallway that leads to two inviting reception rooms, perfect for both relaxation and entertaining. The living room provides a cosy atmosphere, while the dining room offers a delightful space for family meals.

The kitchen is conveniently located, making meal preparation a breeze. Ascending to the first floor, you will find three bedrooms, each with its own unique character, alongside a well-appointed bathroom. For those seeking additional space, the second floor boasts a versatile loft/office room, ideal for a home office or a creative retreat.

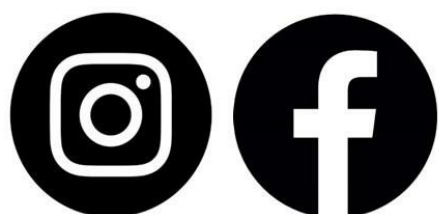
Externally, the property benefits from off-road parking, ensuring convenience for residents and guests. At the rear, a garage offers further potential, whether for storage or conversion into a home office or gym, catering to your lifestyle needs.

This delightful home is situated in a peaceful area, yet remains close to local amenities, schools, and transport links, making it an ideal choice for those looking to settle in a friendly community. With its blend of comfort, space, and potential, this property is not to be missed.

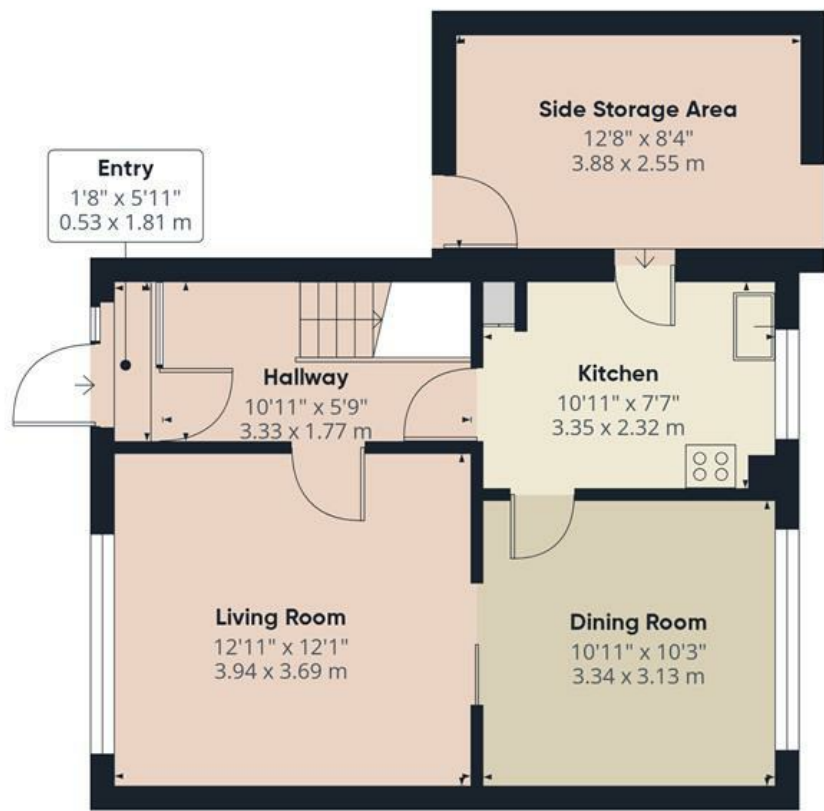
Council tax band - D

- NO ONWARD CHAIN
- THREE BEDROOMS
- END OF TERRACE
- OFF ROAD PARKING & GARAGE
- LOFT/OFFICE SPACE
- TWO RECEPTION ROOMS
- CUL DE SAC LOCATION
- POTENTIAL TO EXTEND STPP
- 360 VIRTUAL TOUR

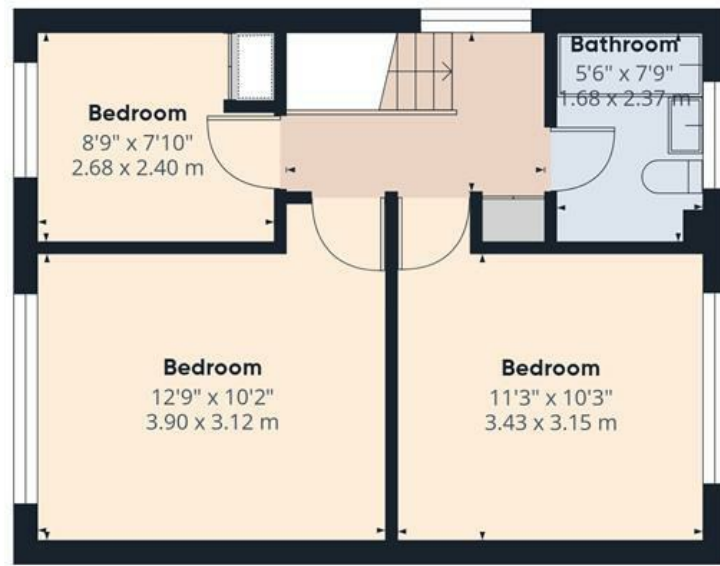
Get Social



VillageProperties.co.uk



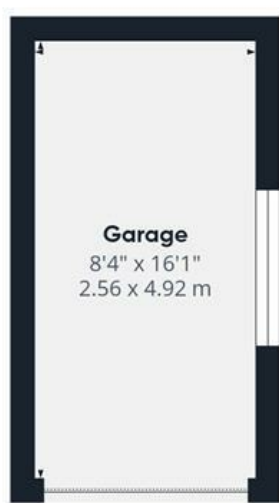
Ground Floor Building 1



Floor 1 Building 1



Floor 2 Building 1



Ground Floor Building 2



Approximate total area^m
1216 ft²
112.8 m²

(1) Excluding balconies and terraces

Calculations reference the RICS IPMS 3C standard. Measurements are approximate and not to scale. This floor plan is intended for illustration only.

GIRAFFE360