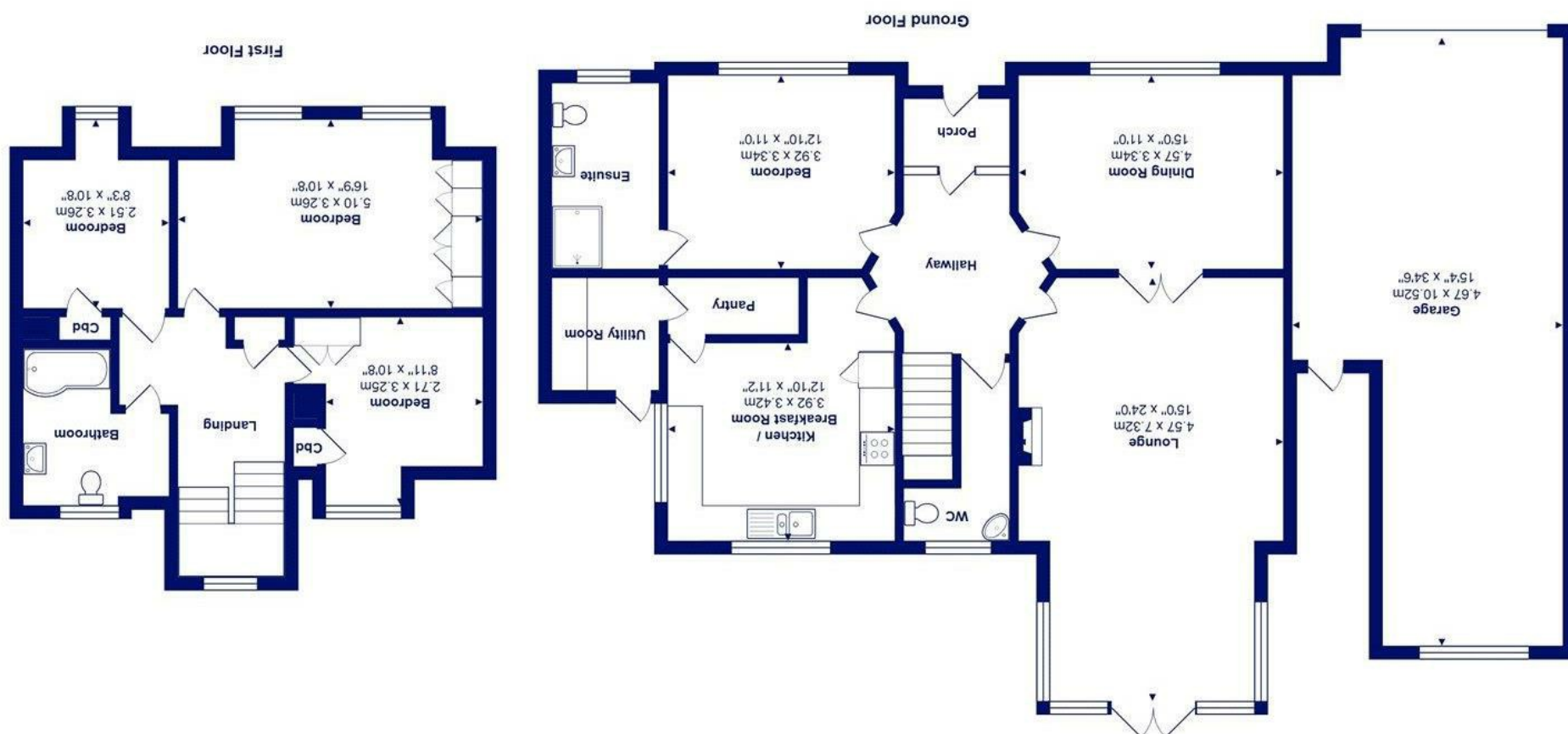




Total Area: 156.0 m² ... 1679 ft² (excluding garage)
All measurements are approximate and for display purposes only



16 Hinton Wood Avenue, Highcliffe On Sea, BH23 5AH

£849,950

Mitchells
1963 — TODAY

A beautifully presented detached chalet bungalow on the southern end of Hinton Wood Avenue boasting enjoying a wonderful West facing garden with VIEWS and ACCESS onto Nea Meadows Nature Reserve.

- Beautifully appointed detached chalet in excess of 1600sqft (excluding garage)
- Four bedrooms (one ground floor)
- Two bath/shower rooms (one en-suite)
- Good size kitchen/breakfast room with access onto the gardens
- Fantastic large sitting room with feature fireplace & double doors leading onto the garden
- Separate dining room with sunny aspect
- Glorious rear garden with views and access onto Nea Meadows
- Attached double length garage & ample off-road parking
- Short walk to high street, cliff top and beach
- Council Tax

EPC Rating Band: B
Council Tax Band: E
Freehold

Successful buyers will be required to complete online identity checks provided by Lifetime Legal. The cost of these checks is £45 inc. VAT per purchase which is paid in advance, directly to Lifetime Legal. This check verifies your identity in line with our obligations as stipulated by our regulatory body, HMRC

