



WETHERELL
MAYFAIR'S FINEST PROPERTIES



Farm Street, W1J

£5,633 PCM

This well presented lower ground floor, two bedroom two bathroom apartment is ideally located in the heart of Mayfair Village.

The property includes two spacious double bedrooms both of which benefit from an en-suite bathroom. The living room includes space for dining and entertaining as well as charming French doors leading out onto a lovely courtyard.

The kitchen is fully integrated and has an adjoining snug room perfect for breakfast or relaxing, as well as a vaulted storage area.

Farm Street is perfectly located in the heart of Mayfair Village, close to the exclusive restaurants, boutiques and galleries of Bond Street.

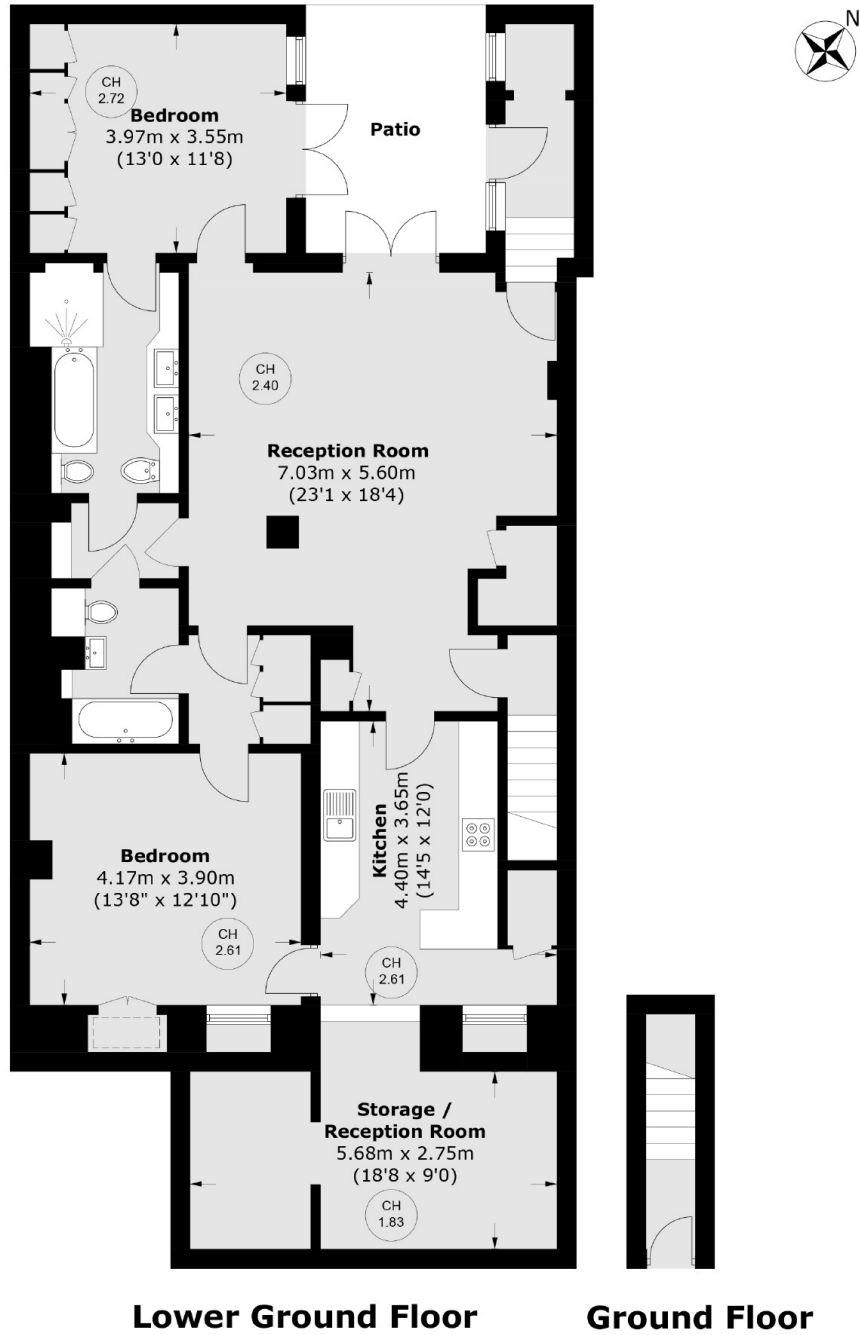


FEATURES

- Two Double Bedrooms • Two Bathrooms • Wooden Flooring • Fully Furnished • Private Courtyard • Excellent Location •



Farm Street,
London, W1J



Total area (approx.): 137.8 sq. m (1,483.2 sq. ft)