



Grove End Road, NW8

£350,000

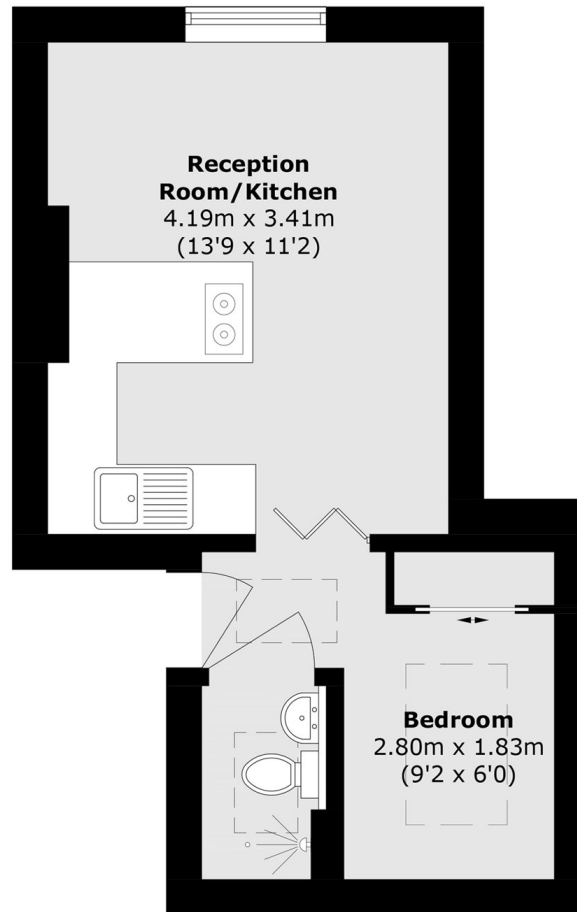
A well-presented one-bedroom apartment set on the sixth floor and offered chain free. The property features wood flooring throughout and a bright open-plan kitchen/reception room with far-reaching outlooks. An ideal purchase for first-time buyers or investors.

Located in a convenient St John's Wood setting, Bronwen Court is close to the amenities of St John's Wood High Street and the open spaces of Regent's Park. The area benefits from a strong residential feel with excellent connectivity. Transport links include St John's Wood Underground Station (Jubilee Line) and nearby bus routes.

Features

- One Bedroom
- Chain Free
- Sixth Floor
- Open Plan Kitchen
- Central Location
- Communal Hot Water

Grove End Road,
London, NW8



Total area (approx.): 23.1 sq. m (248.6 sq. ft)