



Folgate Street, E1

£325,000

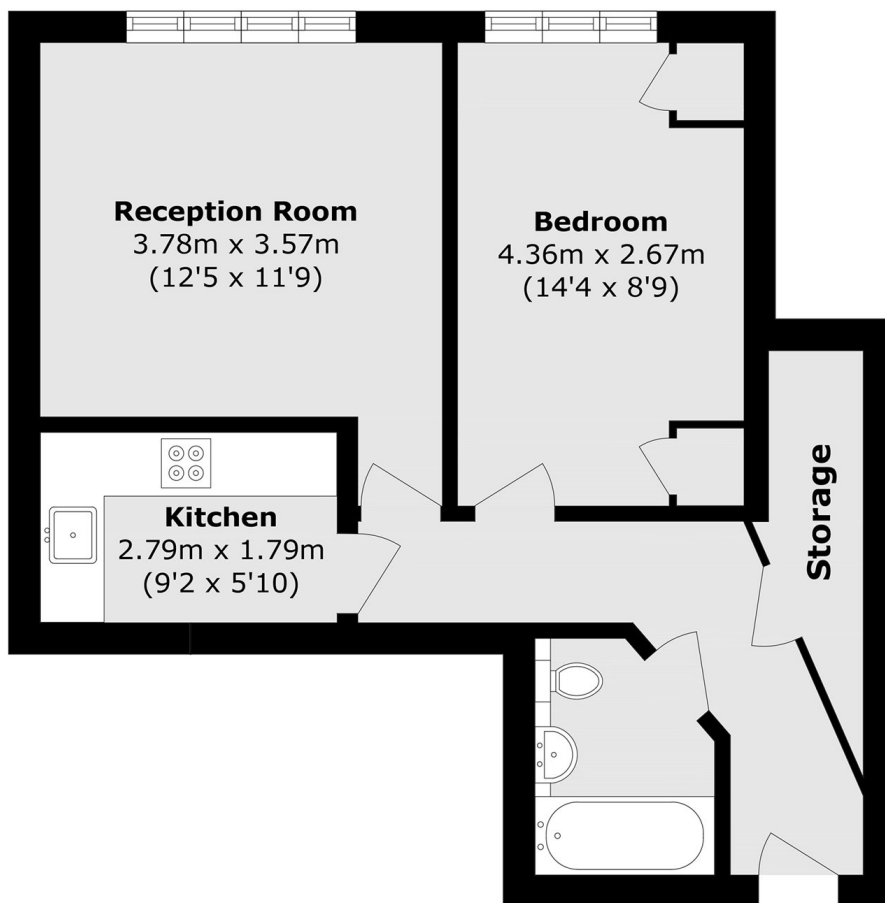
A one bedroom apartment set within a very popular development. This apartment offers a spacious, bright living room with ample space to dine and a separate, fully integrated kitchen. The properties double bedroom has integrated storage and there is plenty of additional storage in the hallway, here you will also find the family bathroom.

Folgate Street is a cobbled street located on the edge of Spitalfields Market. The location offers a range of fashionable shops, bars, restaurants, entertainment and transport links in Brick Lane, Liverpool Street and Shoreditch.

Features

- One bedroom
- Sought after location
- Separate kitchen
- Great transport links
- Bright interiors

Folgate Street,
London, E1



Total area (approx.): 46.3 sq. m (498.3 sq. ft)