



Walmer Close

St. Crispin, Northampton

oriordanbond
SALES & LETTINGS



Walmer Close

St. Crispin
NN5 4WL

OFFERS OVER £285,000

A rarely available four bedroom town house, situated in the desirable area of St. Crispin, within close proximity to a wealth of local amenities including schools, parks, shops and offering great travel links to the M1.

Offered with no onward chain and presented to a great standard throughout, the accommodation comprises entrance into sitting room, kitchen/dining room, cloakroom/WC, first floor landing, two double bedrooms and family bathroom, second floor landing, master bedroom with en-suite shower room and a further double bedroom. Outside is an enclosed lawn and patio rear garden and off road parking for two cars to the front. Further benefits include uPVC double glazing and gas radiator heating. (B/1059/S)

Additional information

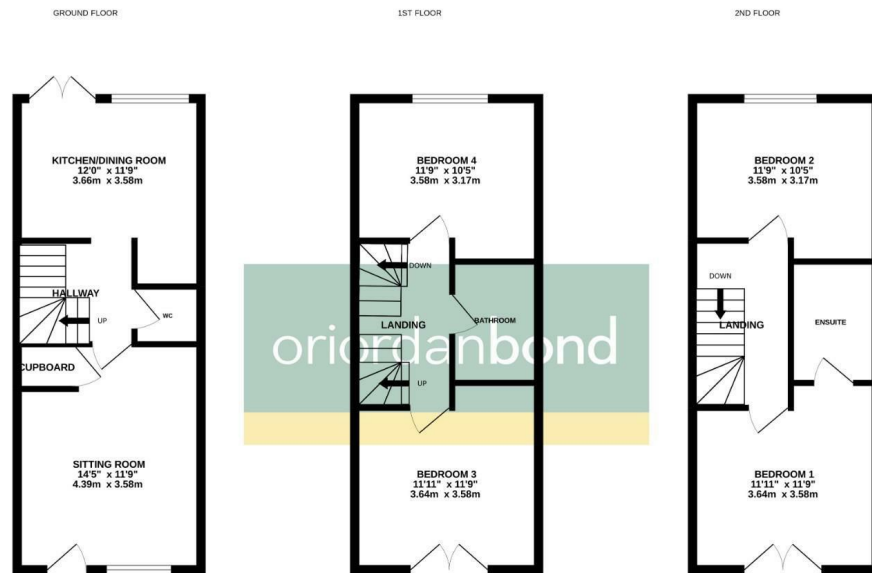
- Council Tax Band: C
- Energy Efficiency Rating: B

Viewing

Viewing strictly by appointment – details below

Disclaimer

O’Riordan Bond Estate Agents Limited has not tested apparatus, equipment, fittings or services and so cannot verify they are in working order. The buyer is advised to obtain verification from their solicitor or surveyor.



TOTAL FLOOR AREA: 1059 sq. ft. (98.4 sq. m.) approx.
Whilst every attempt has been made to ensure the accuracy of the floorplan contained here, measurements of doors, windows, rooms and any other items are approximate and no responsibility is taken for any error, omission or mis-statement. This plan is for illustrative purposes only and should be used as such by any prospective purchaser. The services, systems and appliances shown have not been tested and no guarantee as to their operability or efficiency can be given.
Made with Metropix ©2022

O’Riordan Bond Duston Sales
01604 589007

duston@oriordanbond.co.uk

