



2 Foxwood Gardens, Tamerton Foliot, Plymouth, Devon, PL6 5ET



Price £425,000



Situated in the highly desirable residential road of Foxwood Gardens in Tamerton Foliot, this substantial semi-detached family home offers exceptionally versatile accommodation, perfectly suited to growing families, multi-generational living or those seeking additional income potential through a self-contained annexe. Occupying a generous plot within a quiet cul-de-sac, the property combines spacious and well-balanced accommodation with flexible living arrangements rarely available within this sought-after location.

The main residence is beautifully arranged to provide bright and welcoming living space throughout. A spacious entrance hallway gives access to a generous lounge featuring an attractive bay window and ample room for both seating and entertaining. To the rear, the impressive open-plan kitchen/diner forms the heart of the home, offering extensive worktop and storage space together with plenty of room for family dining and social gatherings. Double doors lead seamlessly into a large conservatory overlooking the rear garden, creating an additional reception area ideal for year-round enjoyment.

On the first floor, the main house continues to impress with three well-proportioned bedrooms, including two excellent doubles and a further generous single room suitable for a nursery, dressing room or home office. A modern fitted shower room completes the principal accommodation.

A particular feature of the property is the substantial adjoining annexe, offering independent accommodation ideal for dependent relatives, older children, guest accommodation or possible supplementary income, subject to any necessary consents. The annexe benefits from its own spacious lounge/diner, fitted kitchen, shared utility room and separate external access, creating a genuine sense of independence whilst remaining connected to the main home. Upstairs, there are two further bedrooms together with a shower room, making this an incredibly flexible addition to the property.

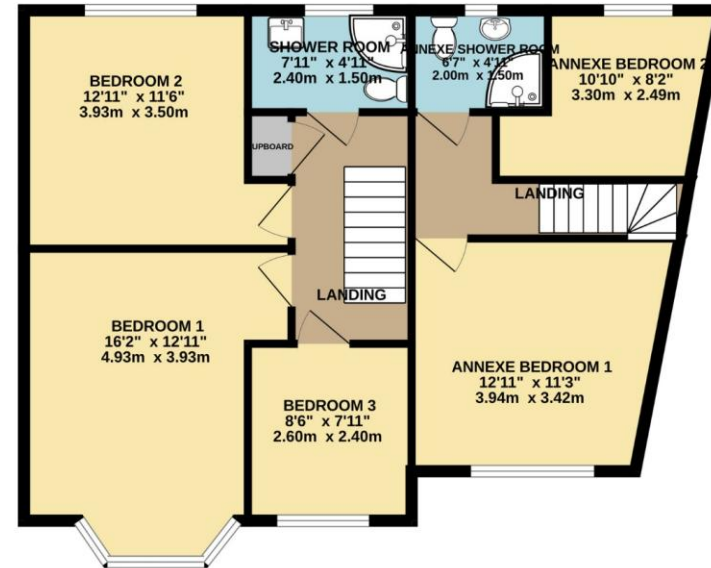
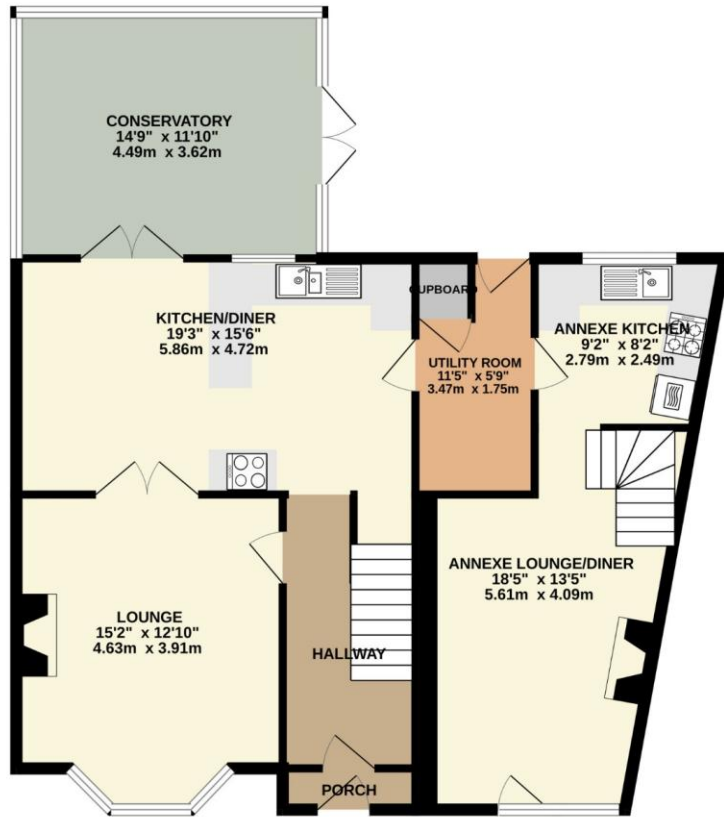
Externally, the property enjoys a pleasant position within this established residential setting, with south facing gardens providing outdoor space for both relaxation and entertaining, against the backdrop of Whiteleigh Woods Local Nature Reserve. To the front there is off-road parking for multiple vehicles. The layout and overall size of the home make it particularly attractive for purchasers seeking adaptable living arrangements without compromising on comfort or privacy.

Foxwood Gardens is conveniently positioned within the ever-popular village of Tamerton Foliot, a charming and well-established area on the northern fringes of Plymouth. The village offers an excellent range of local amenities including shops, pubs, a primary school and regular public transport links, whilst remaining within easy reach of Plymouth city centre, Derriford Hospital and major transport routes including the A38. The surrounding area is renowned for its nearby countryside walks, access to the Tamar Valley and picturesque green spaces, making it especially appealing to families and those seeking a semi-rural lifestyle whilst retaining excellent connectivity.



To view this property call Lang Town & Country Estate Agents on **01752 256000**.





TOTAL FLOOR AREA : 1761 sq.ft. (163.6 sq.m.) approx.

Whilst every attempt has been made to ensure the accuracy of the floorplan contained here, measurements of doors, windows, rooms and any other items are approximate and no responsibility is taken for any error, omission or mis-statement. This plan is for illustrative purposes only and should be used as such by any prospective purchaser. The services, systems and appliances shown have not been tested and no guarantee as to their operability or efficiency can be given.
Made with Metropix ©2026



Lang Town & Country
6 Mannamead road
Mannamead
Plymouth
PL4 7AA

Tel: 01752 256000

Email: property@langtownandcountry.com

www.langtownandcountry.com

Lang Town & Country endeavour to ensure the accuracy of property details produced and displayed, we have not tested any apparatus, equipment, fixtures, fittings or services and so cannot verify that they are connected, in working order or fit for purpose. A buyer must check the availability of any property and make an appointment to view before embarking on any journey to see a property.

