

84 Beamish Close

North Weald, Epping

Welcome to Beamish Close. A beautifully designed three bedroom family home with open plan living and southerly facing landscaped rear garden with garden room - all sat within the much loved village of North Weald.

Council Tax band: D

Tenure: Freehold

- Open plan living
- Landscaped garden
- Driveway
- Beautiful kitchen
- Garden room
- Short drive to Epping & the Mill



Entrance Hallway

Utility / Store / WC

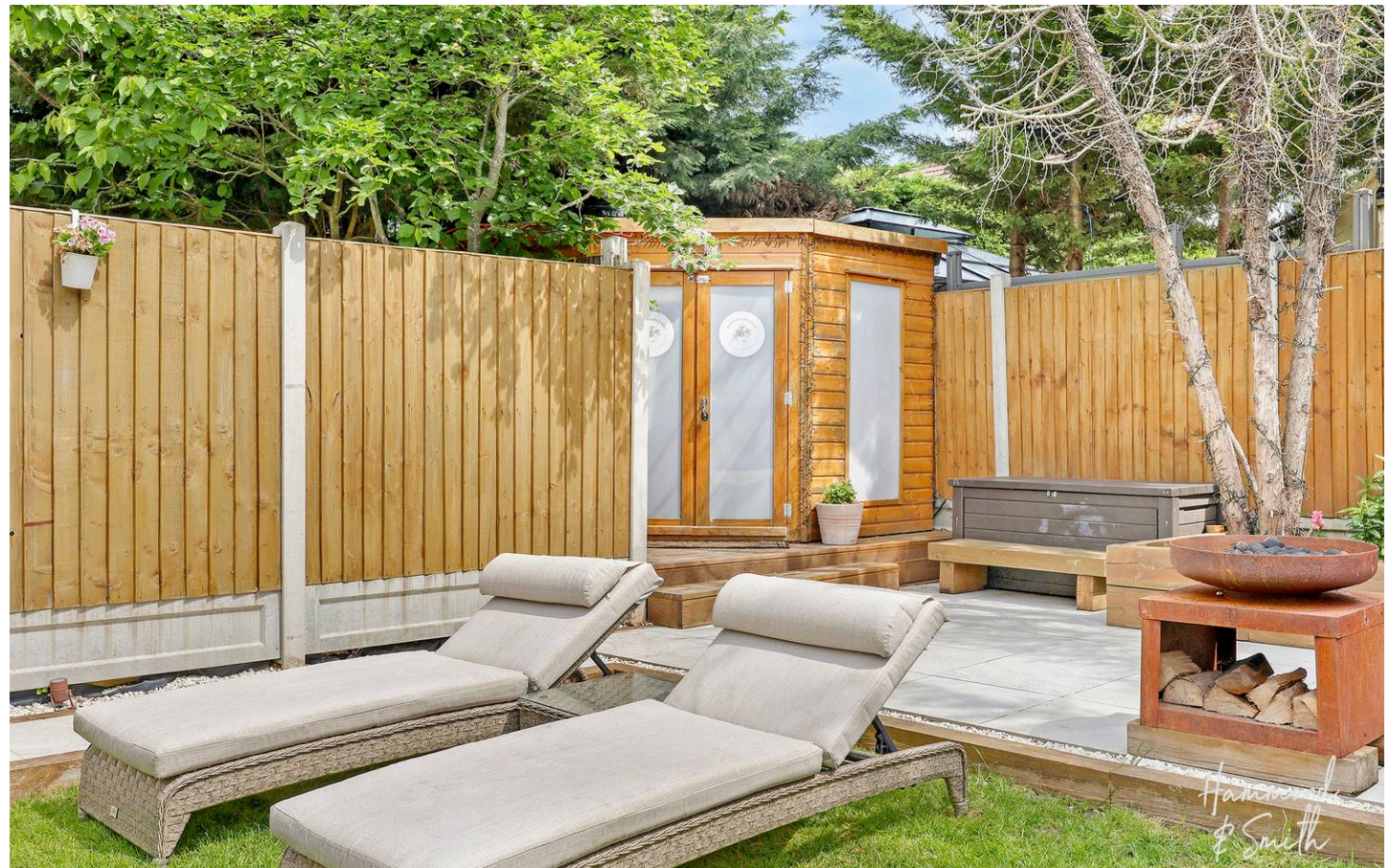
Kitchen / Reception / Dining
24' 11" x 18' 4" (7.60m x 5.60m)

Bedroom
12' 2" x 11' 2" (3.70m x 3.40m)

Bedroom
12' 2" x 11' 6" (3.70m x 3.50m)

Bedroom
8' 10" x 8' 6" (2.70m x 2.60m)

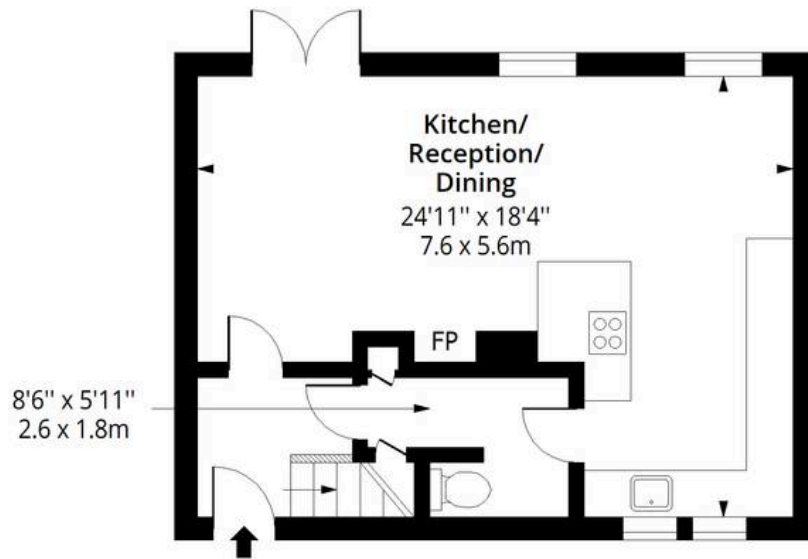
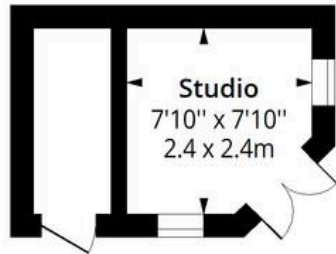
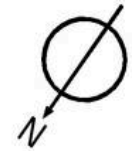
Bathroom





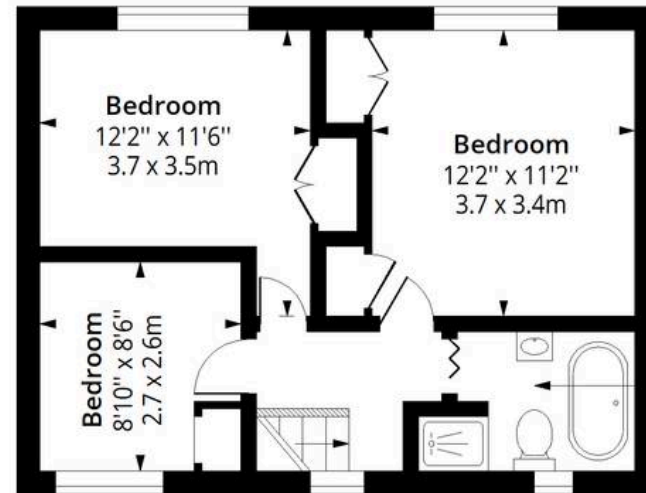
Beamish Close CM16

Approx. Gross Internal Area 944 Sq Ft - 87.70 Sq M
Approx. Gross Outbuilding Area 88 Sq Ft - 8.18 Sq M



Ground Floor

Floor Area 472 Sq Ft - 43.85 Sq M



First Floor

Floor Area 472 Sq Ft - 43.85 Sq M



Measured according to RICS IPMS2. Floor plan is for illustrative purposes only and is not to scale. Every attempt has been made to ensure the accuracy of the floor plan shown, however all measurements, fixtures, fittings and data shown are an approximate interpretation for illustrative purposes only. 1 sq m = 10.76 sq feet.

Date: 11/5/2026