



Northumberland
Properties

Old Park Road, Swarland
£535,000





Old Park Road

Swarland, Morpeth

Council Tax band: E

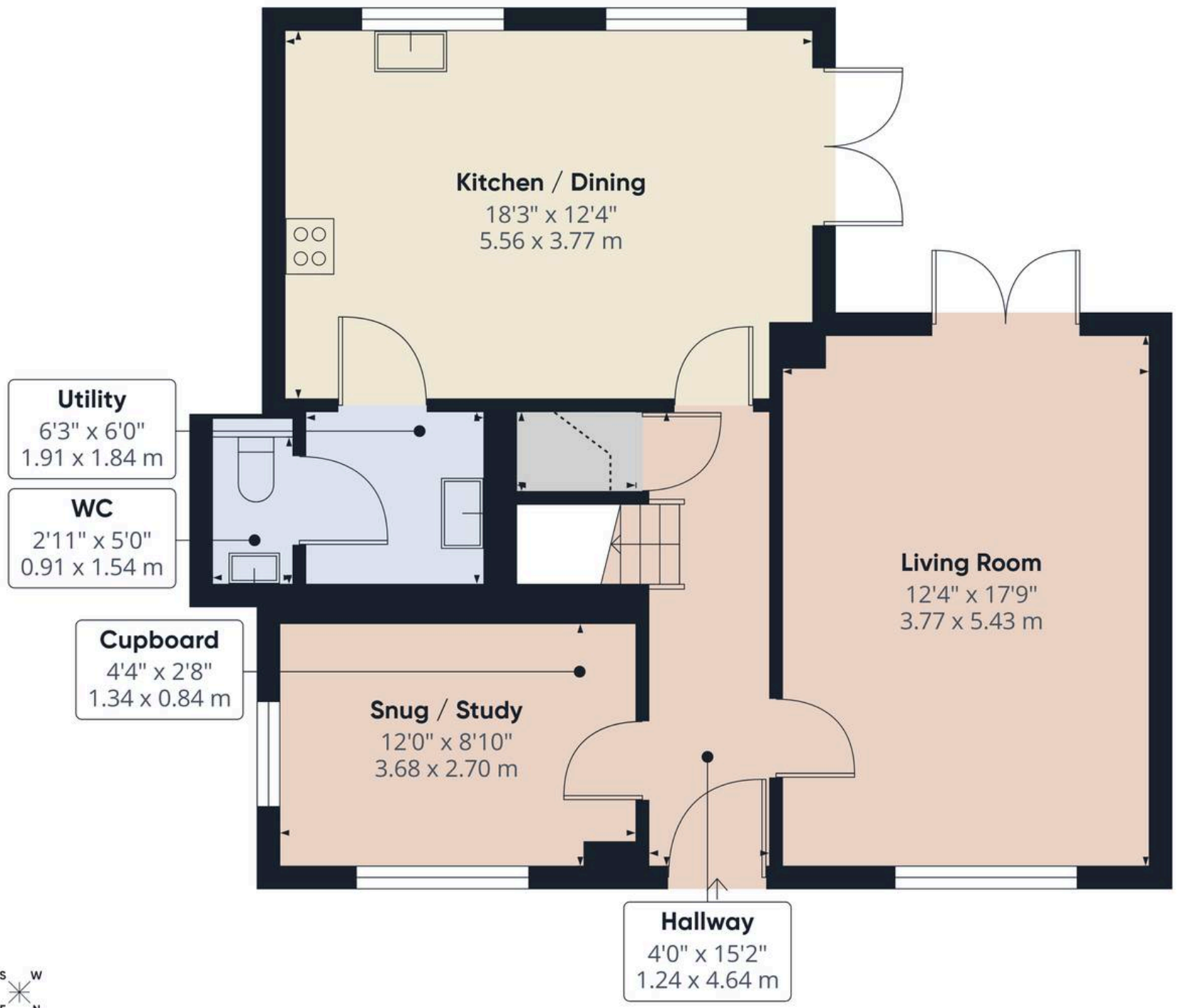
Tenure: Freehold

EPC Energy Efficiency Rating:

EPC Environmental Impact Rating:

- Beautifully presented four-bedroom detached home, still under build warranty
- Full-length living room offering exceptional space and natural light
- Spacious kitchen-dining area with integrated appliances and French doors opening to the garden
- Separate practical utility room
- Additional study/snug ideal for home working or flexible living
- Two en-suite bedrooms plus a modern family bathroom
- Private landscaped rear garden with patio, lawn, mature borders, and a substantial summer house
- Detached double garage with driveway parking for two cars





Approximate total area⁽¹⁾
708 ft²
65.7 m²

Reduced headroom
8 ft²
0.7 m²

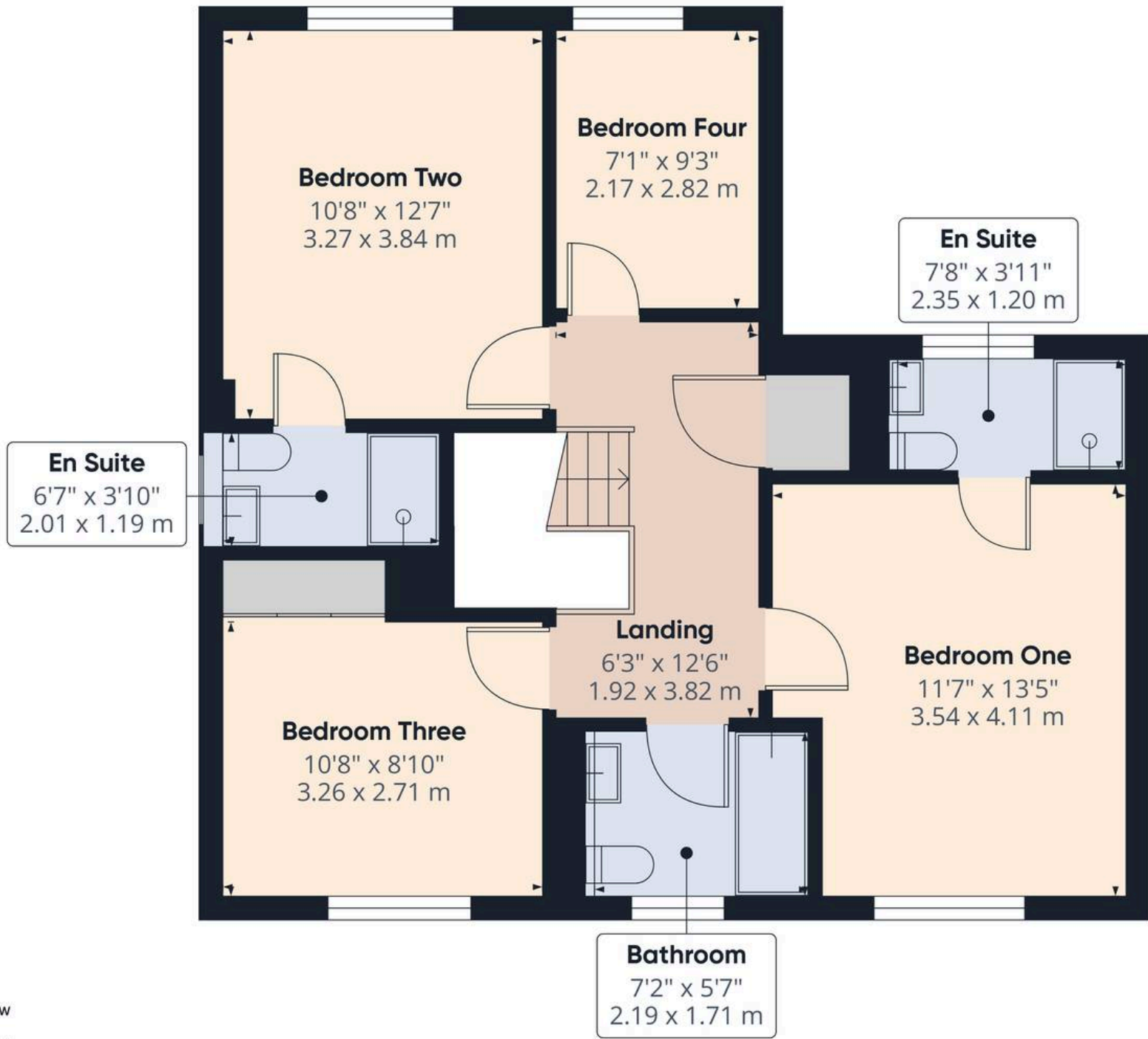
(1) Excluding balconies and terraces

Reduced headroom
..... Below 5 ft/1.5 m

Calculations reference the RICS IPMS 3C standard. Measurements are approximate and not to scale. This floor plan is intended for illustration only.

GIRAFFE360





Approximate total area⁽¹⁾

634 ft²
58.8 m²

(1) Excluding balconies and terraces

Calculations reference the RICS IPMS 3C standard. Measurements are approximate and not to scale. This floor plan is intended for illustration only.

GIRAFFE360









Swarland remains a highly desirable village, known for its generous plot sizes, well-kept green spaces, and easy access to the A1, making regional travel and commuting remarkably straightforward. This beautifully maintained home is a fantastic opportunity to secure a move-in-ready property in a settled, attractive development.

Utility's:

- Mains Gas Central Heating
- Mains Water
- Mains Electric
- Mains Waste



Northumberland Properties

12 Market Street, Alnwick - NE66 1TL

01665660910 • info@northumberlandproperties.co.uk • www.northumberlandproperties.co.uk



Northumberland
Properties