



Lyngs Close

Yalding | ME18 6JS





Welcome to Lyngs Close, a residential cul-de-sac featuring a variety of homes and the convenience of the community village hall just moments away.

Set within the charming Kent village of Yalding - governed by Maidstone Borough Council and celebrated for its historic character and beautiful river landscapes, this location offers the perfect blend of countryside living and everyday convenience. The village centre is within easy walking distance, providing local shops, amenities and traditional pubs. Yalding's own rail station is only a couple of minutes drive, with regular services to Maidstone, Tonbridge and Paddock Wood, plus onward connections to London.

Offered to the market with the significant advantage of NO ONWARD CHAIN, this ground-floor maisonette benefits from its own private entrance and features two double bedrooms, a bathroom, a separate living room and an adjoining kitchen. A standout highlight is the substantial private garden, an unusually generous outdoor space accessed directly from your back door, ideal for relaxation, entertaining or future landscaping ideas.

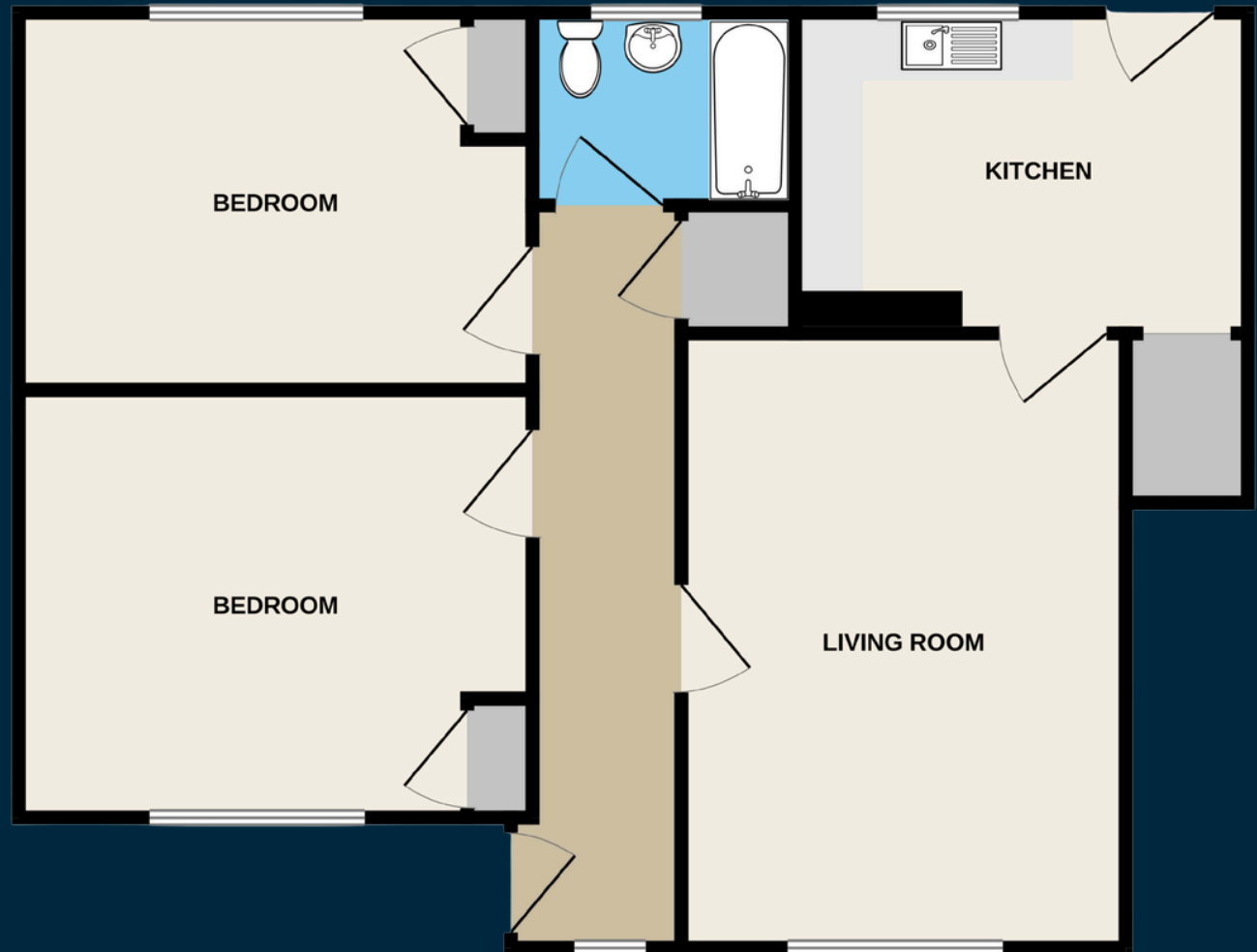


Ground Floor

Private Entrance
Hallway
Living Room - 14'3 x 10'4
Kitchen - 10'6 x 8'5
Bedroom - 11'11 x 9'11
Bedroom - 11'11 x 8'9
Bathroom

Outside

Substantial Private Garden
Storage Room
Front Garden





01732 647009



@sreynoldsrealestate

www.stuartreynolds.exp.uk.com