



Score	Energy rating	Current	Potential
92+	A		
81-91	B		
69-80	C	77 C	77 C
55-68	D		
39-54	E		
21-38	F		
1-20	G		



(for more photographs go to [www.maysagents.co.uk](http://www.maysagents.co.uk))

**£349,950 Freehold**

## 14 Willowbrook

Middleton On Sea, Bognor Regis, PO22 6PD

[www.maysagents.co.uk](http://www.maysagents.co.uk)



These particulars are believed to be correct but their accuracy is not guaranteed. They do not form part of any contract.

Mays The Village Agent Ltd. Company Number 7930877. Registered in Cardiff. Registered Office: 93 Aldwick Road, Bognor Regis PO21 2NW

If you are looking for a degree of privacy in your next purchase why not take a look at this **LINK DETACHED BUNGALOW**. Situated on a small private estate, amongst other properties of a similar style and size, the gated access adds to that feeling of seclusion. Located a short distance from local shops and bus routes, Bognor Regis town centre lies some 3 miles to the west with main line railway station (direct links to London Victoria) and more comprehensive facilities. Offering 2 bedrooms, plus a bath/shower room with gas fired central heating and uPVC framed double glazing, and linked only by the garage, why not call **May's** for an appointment to view, judge for yourself the level of privacy on offer.

## ACCOMMODATION

**uPVC framed double glazed door to:**

### ENTRANCE HALL:

radiator; airing cupboard housing gas fired combination boiler & slatted shelving.

**KITCHEN:** 7' 5" x 10' 7" (2.26m x 3.22m)

(maximum measurements over units) range of floor standing drawer and cupboard units having roll edge worktop and matching wall mounted cabinets over; tiled splash backs; inset

stainless steel sink; integrated electric oven; four burner electric hob with filter hood over; space and plumbing for washing machine and dishwasher; further appliance space; radiator.

**SITTING ROOM:** 18' 10" x 11' 3" (5.74m x 3.43m)

(into bay) a dual aspect room; two radiators; T.V aerial point; telephone point.

**BEDROOM 1:** 13' 6" x 9' 8" (4.11m x 2.94m)

radiator; double built in wardrobe; telephone point; T.V. aerial point.

**BEDROOM 2:** 9' 0" x 7' 3" (2.74m x 2.21m)

radiator; T.V. aerial point; double glazed double doors to rear garden.

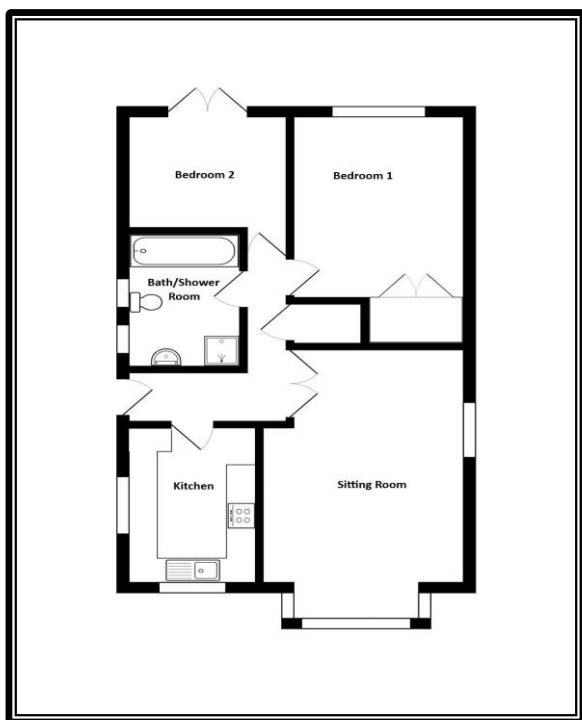
### BATH/SHOWER ROOM:

part tiled walls; matching suit comprising panelled bath with mixer tap and hand held shower attachment; pedestal wash hand basin; close coupled W.C.; shower cubicle; ladder style heated towel rail; extractor fan.

## OUTSIDE AND GENERAL

### GARDENS:

The REAR GARDEN has been laid to a combination of brick paving with lawn and shrub borders. Gated access to the side leads to the FRONT GARDEN which again has been laid principally to lawn with a brick paved driveway providing parking for a number of vehicles.



The mention of any appliance and/or services in these sales particulars does not imply that they are in full and efficient working order or that they have been tested.