

Buttermere Close Morden, SM4 4SG

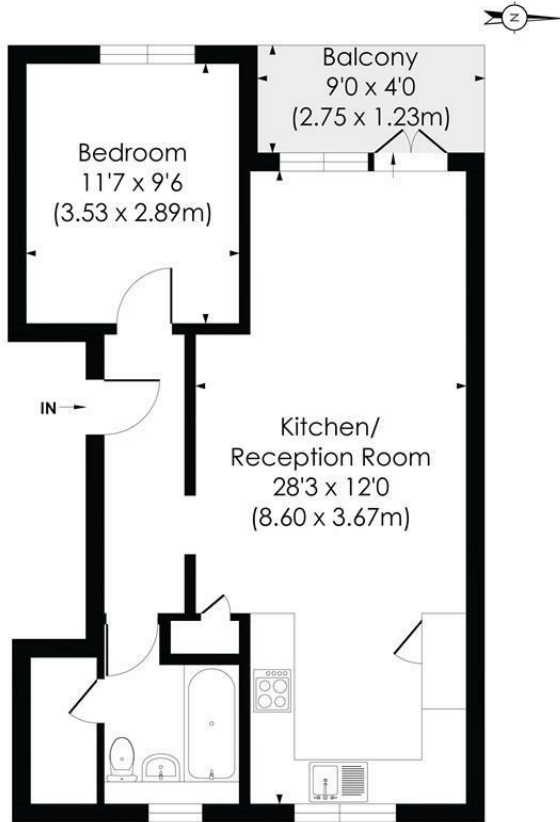
£255,000 Leasehold



Well-proportioned one-bedroom first floor flat benefitting from a recently extended long lease, open-plan living space and a private south-west facing balcony overlooking the Derwent Flood wash nature reserve. Further benefits include a private external storage cupboard on the ground floor, providing useful additional storage. Ideally located close to transport links and local amenities. An excellent opportunity for first-time buyers, downsizers or investors alike, the flat is well positioned close to local amenities, transport links and open green spaces, combining convenience with a tranquil outlook.

BUTTERMERE CLOSE, SM4

Approx. Gross Internal Floor Area
543 Sq. ft/50.41 Sq. m

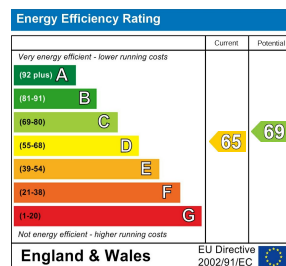


FIRST FLOOR

© Pixangle Property Marketing Ltd. info@pixangle.com Tel: 0208 870 2118
 This floor plan has been prepared for the purpose of illustration only in accordance with the latest RICS code of measuring practice and is not to scale. All measurements and areas are approximate and whilst every effort has been made to ensure the accuracy of the plan contained here, no responsibility is taken for any error, omission or misstatement.



- One Bedroom First Floor Purpose-Built Apartment
- Private South-West Facing Balcony
- Bright & Spacious Reception
- Peaceful Outlook Over Derwent Floodwash Nature Reserve
- Convenient Location for Local Shops, Green Spaces & Transport Link
- No Onward Chain
- Recently Extended Lease to 125 years
- Ground Rent £10 & Service Charges £1,141.72 PA
- Merton Council Tax Band - C
- EPC Rating - D



For Free Mortgage Quote and Best Mortgage Rates, call Ellisons Mortgage Advisor on 0208 543 1166



Although these particulars are believed to be correct, their accuracy is not guaranteed and they do not form part of any contract.

Celebrating 30 years of successful Sales and Lettings in Merton

