



Hartfield Crescent, SW19

£559,950

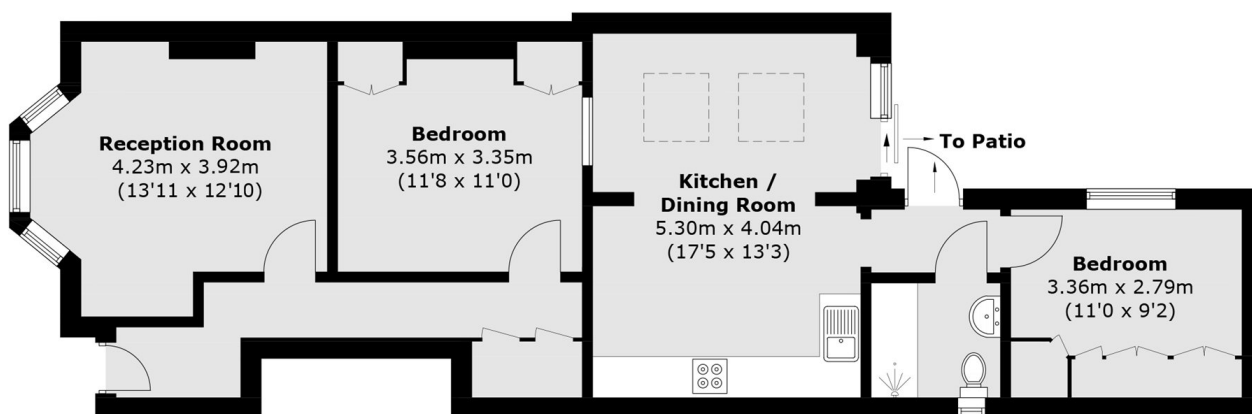
A beautifully refurbished, ground floor two double bedroom maisonette. The property has its own entrance, a lovely courtyard garden, is sold with a long lease and no onward chain.

Hartfield Crescent is a popular one-way street within Wimbledon Town Centre. Located just moments from the district line, overground, restaurants, bars, shopping facilities and in the catchment for an outstanding primary school.

Features

- Ground Floor
- Garden Flat
- Two Double Bedrooms
- No Onward Chain
- Long Lease
- Central Location

Hartfield Crescent, London, SW19



Ground Floor

Total area (approx.): 72.8 sq. m (783.6 sq. ft)