



Guide Price
£210,000

Leasehold

2x  1x  1x 

**Ringsloe Court, The
Parade, Birchington,
Kent, CT7**

OVER 60?

Secure this property
for up to **59% less!**

Wards
Helping you move forwards



Main features

- Being sold with no onward chain
- Seafront apartment looking over Minnis Bay
- Private patio to the front, perfect for summers evenings
- Beautifully spacious property with both bedrooms being doubles
- Situated in the perfect location, just a stone's throw to the sea

Accommodation

GROUND FLOOR

Entrance Hallway

Separate Toilet

Bathroom

Bedroom 1 : 11'11 x 11'3 (3.63m x 3.43m)

Bedroom 2: 10'5 x 9'7 (3.18m x 2.92m)

Lounge : 18'1 x 10'9 (5.52m x 3.28m)

Kitchen : 10'10 x 7'7 (3.30m x 2.31m)

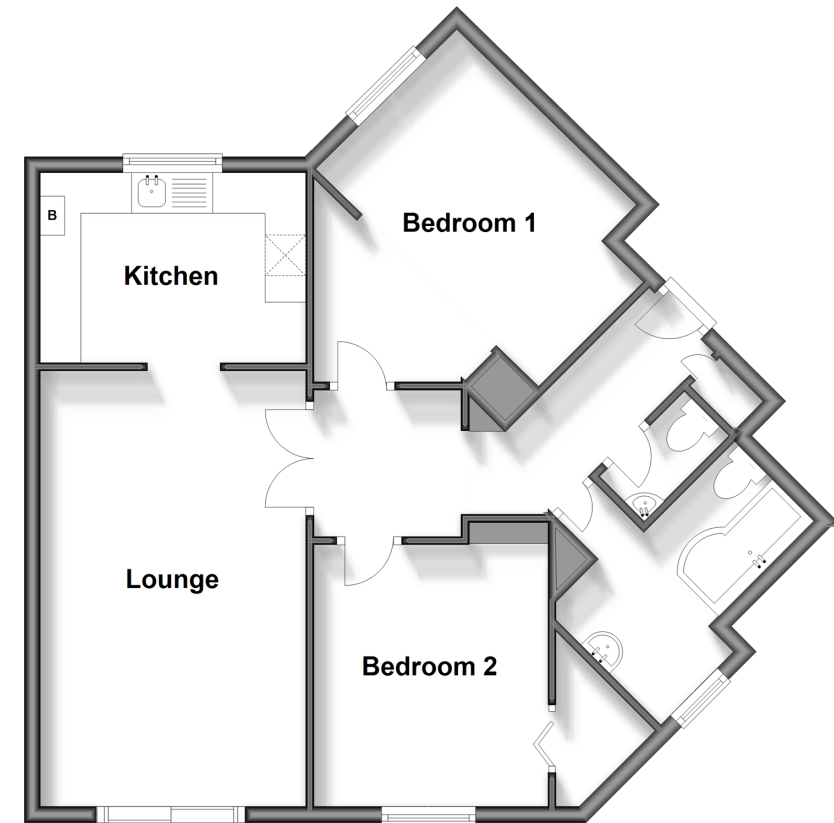
OUTSIDE

Allocated Parking

Patio Area

Ground Floor

Approx. 66.7 sq. metres (717.9 sq. feet)



Call Birchington - 01843 842551 ■ wardsofkent.co.uk

- Legal advice should be taken to verify fixtures/fittings, planning, alterations and/or lease details
- Appliances & services are untested, dimensions are approximate and floor plans are not to scale
- Through a Homewise Home For Life Plan people aged 60+ can secure this property for up to 50% less, by purchasing a Lifetime Lease.



10129716/20250924/HT/DS