



Hollybush Road, KT2

£885,000

A three/four bedroom, family home, located in the ever popular Tudor Estate. Having been extended to the loft and rear, there is over 1,100 sq.ft of accommodation over three floors as well as a large detached garage to the rear.

Ideally positioned within the ever popular Tudor Estate, the house is on Hollybush Road and just 300 yards to Latchmere Recreational field. The Tudor Estate is a firm favourite for families due to the close proximity to several highly rated local schools for children of all ages.

Features

- Three Bedrooms
- Study
- Off Street Parking
- Large Garden
- Spacious Reception Room
- No Onward Chain



Hollybush Road, KT2

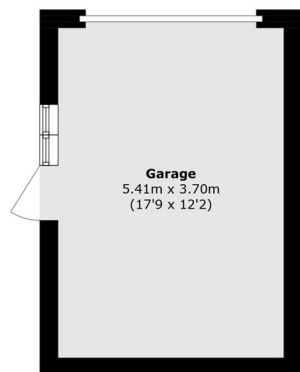
In the ground floor there is a generous entrance hall, large through lounge, modern galley style kitchen and a large, full width extension to the rear.

On the first floor are two double bedrooms, the family bathroom and a study that could also be utilised as a cot room. The house has been loft converted, allowing for the third double bedroom on the top floor.

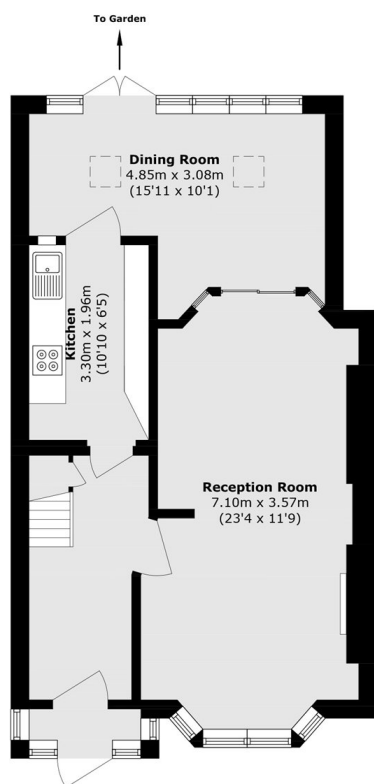
Outside to the front is off street parking for two cars and to the rear is the sunny, south/west facing rear garden that has a large decked area for easy maintenance. There is also a rear access road leading to the detached garage at the bottom of the garden.



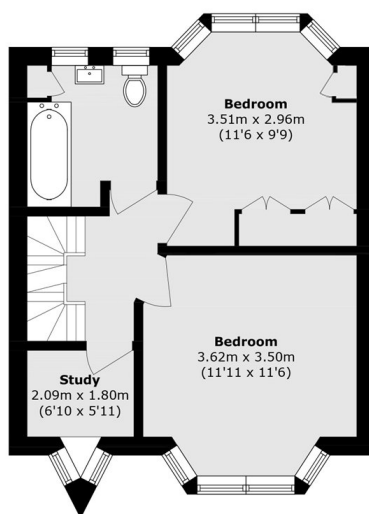
Hollybush Road, Kingston Upon Thames, KT2



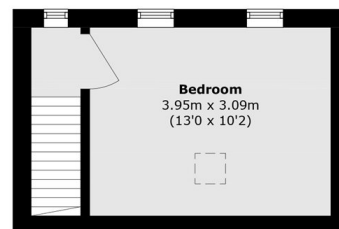
Ground Floor



Ground Floor



First Floor



Second Floor

Total area (approx.): 102.7 sq. m (1105.5 sq. ft)
Garage area (approx.): 20.0 sq. m (215.3 sq. ft)