



Guide Price
£435,000

Freehold

3x  1x  3x 

**Arthur Road, Rochester,
Medway, ME1**

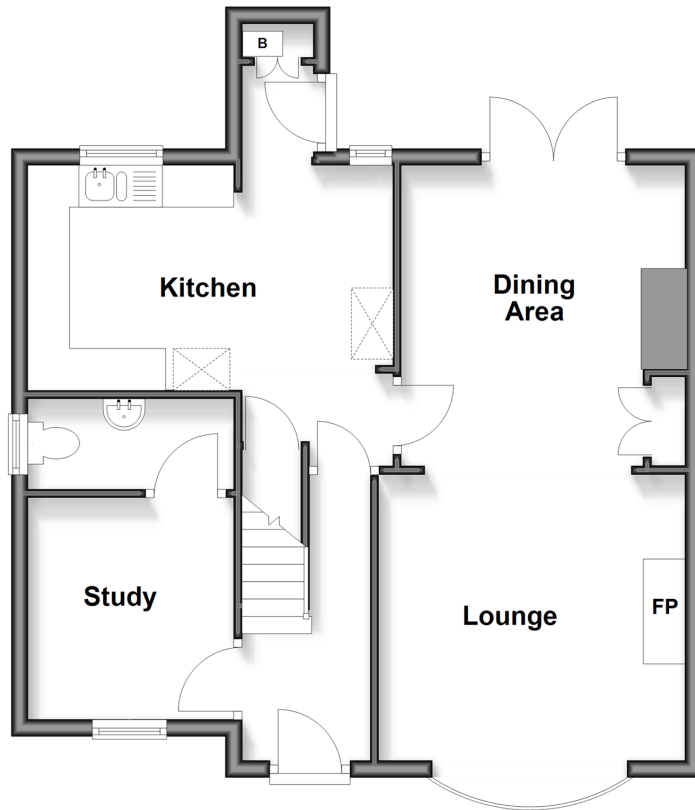
OVER 60?

Secure this property
for up to **59% less!**

Wards
Helping you move forwards

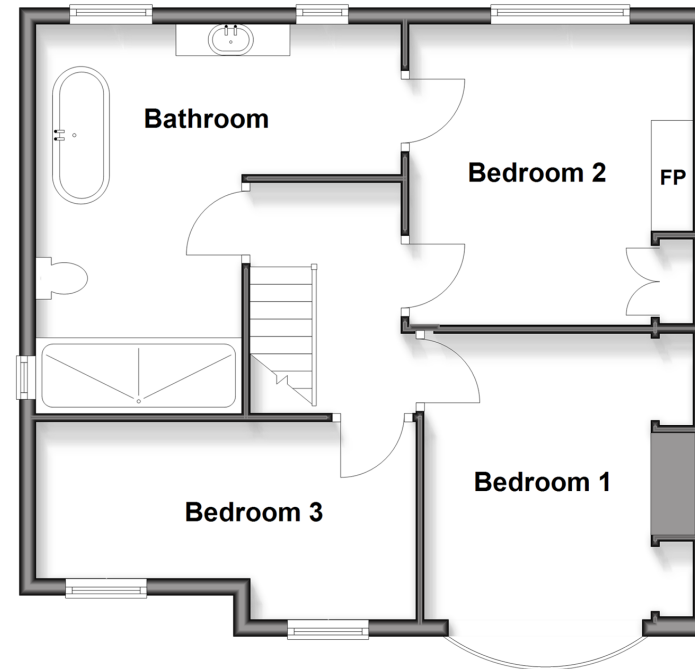
Ground Floor

Approx. 56.4 sq. metres (606.8 sq. feet)



First Floor

Approx. 54.9 sq. metres (591.3 sq. feet)



Accommodation

GROUND FLOOR

Hallway
Cloakroom
Lounge: 13'2 x 11'9 (4.02m x 3.58m)
Dining Area: 11'6 x 11'1 (3.51m x 3.38m)
Kitchen: 14'3 x 8'8 (4.35m x 2.64m)
Study: 13'5 x 8'0 (4.09m x 2.44m)

FIRST FLOOR

Landing
Bedroom 1: 11'7 x 11'1 (3.53m x 3.38m)
Bedroom 2: 12'9 x 10'9 (3.89m x 3.28m)
Bedroom 3: 14'5 x 7'9 (4.40m x 2.36m)
Bathroom: 14'5 at widest point x 13'3 (4.40m x 4.04m)

OUTSIDE

Rear Garden
Off-Road Parking



Main features

- Extended and in immaculate condition!
- Stunning bathroom and landscaped rear garden
- Downstairs cloakroom
- Study that could be used as a 4th bedroom
- Close to the historic High Street and high speed station



Nearest Schools

Primary Schools: Balfour Junior School 0.7 miles

Secondary Schools: Fort Pitt Grammar School 0.6 miles

Further Education: Rochester St John Fisher Catholic



Transport Information

Train Stations: Chatham 0.8 miles, Strood 1.7 miles, Rochester 2.4 miles



Address

Arthur Road, Rochester, Medway, ME1



Directions

For directions to this property please contact us.



Wards
Helping you move forwards

Call Rochester Branch 01634 830925 ■ wardsof Kent.co.uk



- Legal advice should be taken to verify fixtures/fittings, planning, alterations and/or lease details
- Appliances & services are untested, dimensions are approximate and floor plans are not to scale
- Through a Homewise Home For Life Plan people aged 60+ can secure this property for up to 50% less, by purchasing a Lifetime Lease



11530191/20251208/DG/AB