



Mostyn Road, SW19

£750,000

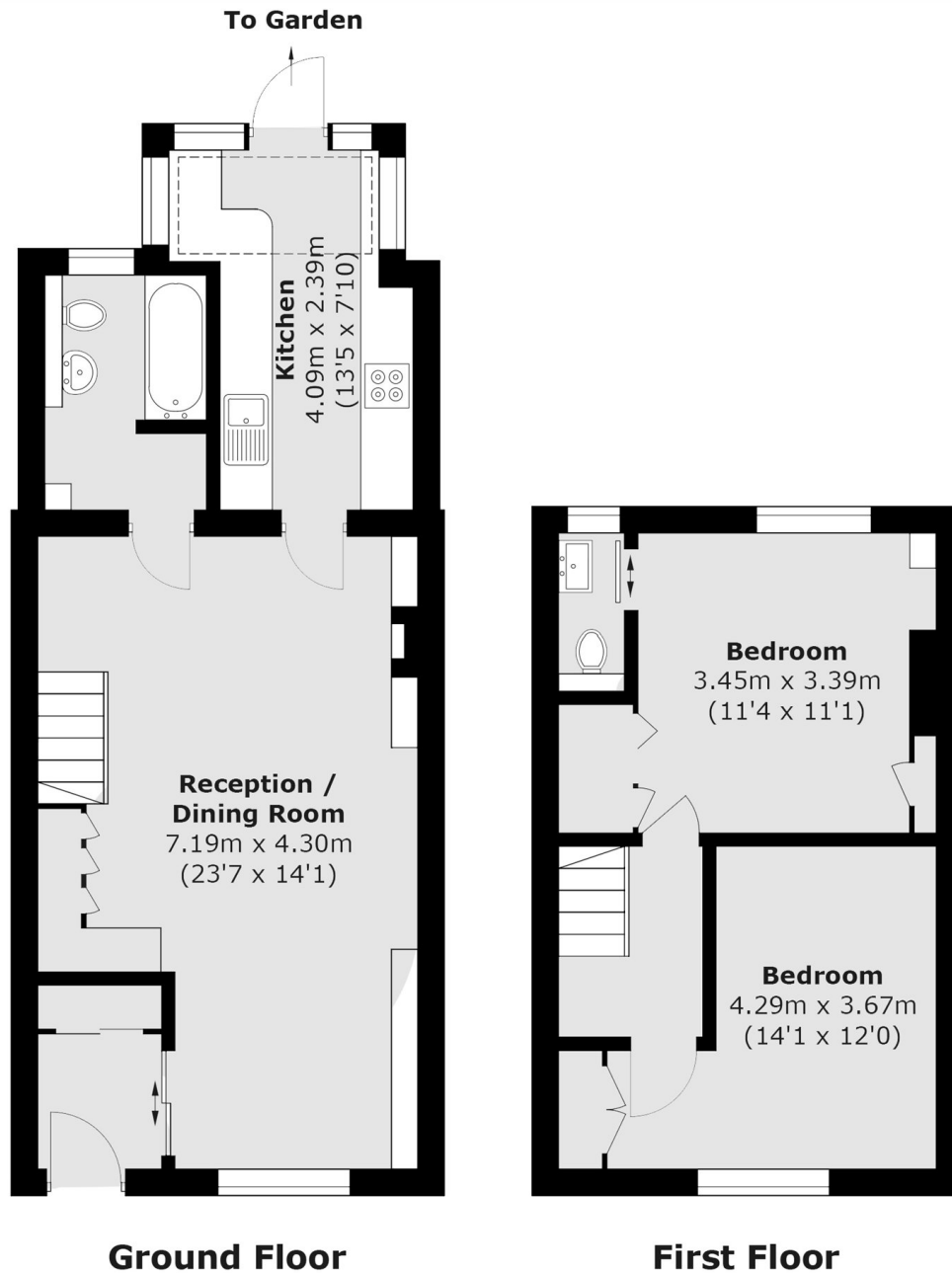
An opportunity to purchase this charming two double bedroom. Victorian terraced cottage, situated in the heart of Merton Park. The property is finished to an incredible standard and is located on a popular tree lined street.

Nestled along Mostyn Road within the John Innes Merton Park Conservation Area and opposite Merton Park Bowling Club. There are excellent transport links, whilst being in the catchment area for Merton Park Primary School.

Features

- Two Double Bedrooms
- Excellent Condition
- Open Plan Living
- Victorian Terraced House
- Excellent Transport Links
- Heart Of Merton Park

Mostyn Road, London, SW19



Total area (approx.): 78.1 sq. m (840.5 sq. ft)