



BerkeleyShaw
REAL ESTATE

Maplewood Court Cambridge Road, Southport, PR9 9RJ

£850 PCM

This newly refurbished, second floor, one-bedroom retirement apartment is located within the heart of Churchtown, Southport. Surrounded by well maintained gardens and boasting a communal lounge and lift access to all floors; Maplewood Court sets the standard in retirement living.

The apartment comprises a fitted kitchen with integrated appliances, spacious lounge with garden views, a sizeable double bedroom, and a modern bathroom with walk-in shower.

Located just a short stroll from the Botanic Gardens, Hesketh Park, and a number of golf clubs, we expect interest levels to be high so get in touch to book your viewing today: 0151 924 6000 or lettings@berkeleyshaw.com


EPC Rating: C
Council tax band: B
Deposit: £850


Minimum tenancy term: 12 months
The property is available for over 65s only.



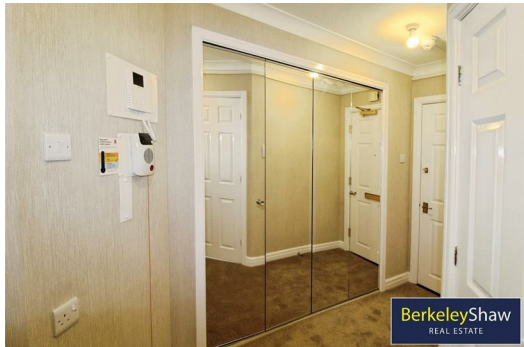
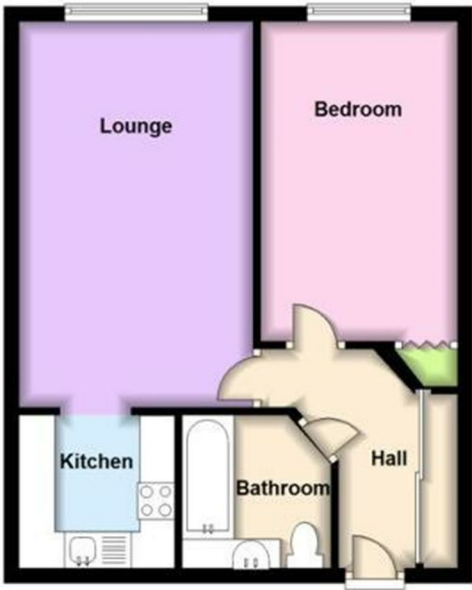
External
Lounge
Kitchen
Bathroom
Bedroom

Communal lounge
Hallway

Energy Efficiency Rating		Current	Potential
Very energy efficient - lower running costs			
(92 plus) A			86
(81-91) B			
(69-80) C			
(55-68) D			
(39-54) E			
(21-38) F			
(1-20) G			
Not energy efficient - higher running costs			
England & Wales		EU Directive 2002/91/EC	

Environmental Impact (CO ₂) Rating		
	Current	Potential
Very environmentally friendly - lower CO ₂ emissions		
(92 plus) A		
(81-91) B		
(69-80) C		
(55-68) D		
(39-54) E		
(21-38) F		
(1-20) G		
Not environmentally friendly - higher CO ₂ emissions		
England & Wales		EU Directive 2002/91/EC 

First Floor



Berkeley Shaw Estate Agents Limited.
Company No. 0784754

Berkeley Shaw Real Estate Limited.
Company No. 05206927

