



West Drive, Caldecote

+44 (0) 1223 508050

[lettings@cookecurtis.co.uk](mailto:lettings@cookecurtis.co.uk)

[www.cookecurtis.co.uk](http://www.cookecurtis.co.uk)

An extremely spacious and well presented 4 bedroom detached bungalow with large driveway and double garage, set back from the road in this popular village located to the south of Cambridge.

£2,100 pcm

West Drive, Cambridge,  
CB23 7NY



Spacious and well presented 4 bedroom detached bungalow, set back from the road, with plenty of driveway parking and a double garage. Freshly decorated throughout, with lovely enclosed landscaped garden.

On entering the property, there is a hallway with storage cupboard and a cloakroom with WC. This opens to a light dining room and separate lounge, both of which have access to the garden. The kitchen is well equipped, with hob/oven and fridge/freezer. There is also a utility room with washing machine and a door to the garden.

The master bedroom has an ensuite shower room and built in storage. There are 2 further double bedrooms, a good sized single room and a family bathroom.

Available now to a professional household. Pets considered.

Please refer to the 'Tenant Guide' brochure, for more information regarding the tenancy application process, referencing, terms and conditions of the holding fee and payments due before the start of the tenancy.

UK power networks suggest the electricity is currently supplied by:  
Ofcom suggests the maximum broadband speed is: 1000Mbps  
Gov.uk suggests the property has a very low flood risk.



Caldecote is well served by a sought after primary school rated good by Ofsted and is within the secondary school catchment for Comberton Village College which is rated outstanding.





106 sqm / 1140 sqft

---

4 bed, 2.5 bath, 2 recep

---

EPC - D

---

Council tax band - E

---

Oil central heating

---

Driveway and double garage

---

Enclosed garden

---

Available Now

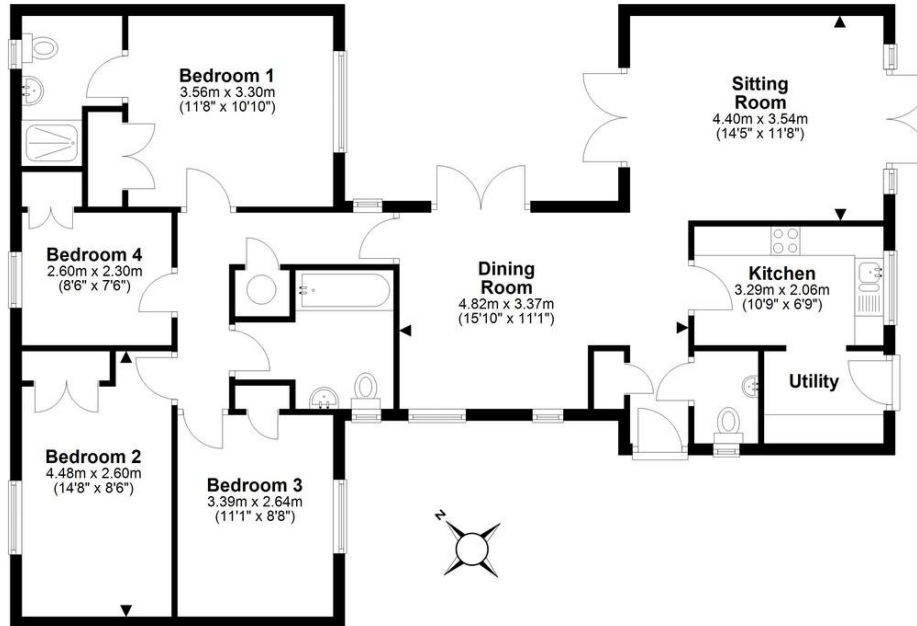
---





## Ground Floor

Approx. 106.2 sq. metres (1143.5 sq. feet)



Total area: approx. 106.2 sq. metres (1143.5 sq. feet)

Drawings are for guidance only. [www.beachenergy.co.uk](http://www.beachenergy.co.uk) - IPMS 2

Plan produced using PlanUp.



Highfields Caldecote is an appealing established community located about 5 miles west of Cambridge city centre and 11 miles east of St Neots. The A428 gives easy access to Cambridge and in the other direction to St Neots. Junction 13 of the M11 is about 4.5 miles east and the A14 is about 5 miles. Caldecote is well served by a sought after primary school rated good by Ofsted and is within the secondary school catchment for Comberton Village College which is rated outstanding. The village also has a large playing field and pavilion used for football and cricket along with tennis and basketball courts which are free for public use. There is also a café, village hall, social club, hairdresser, beauty salon and a petrol station with a Coop and Deli/ coffee shop. The village is surrounded by open countryside with lots of bridleways and footpaths providing pleasant walks and rides and there is a lovely bluebell wood off Highfields Road and nearby in Bourn there is the Cambridge Country Club, a luxurious new complex offering a wellness centre, gym, luxury spa, swimming pool and a bar and restaurants with views over the well established golf course

COOKE  
CURTIS  
& CO