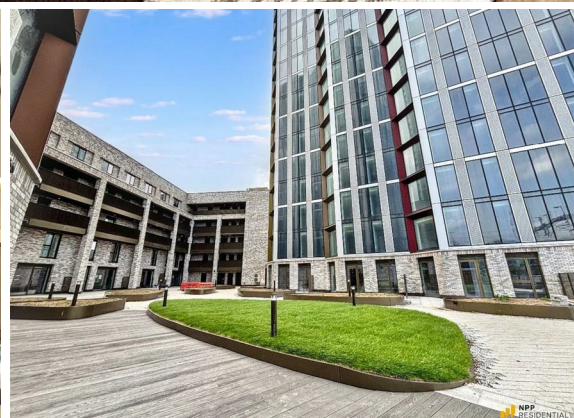


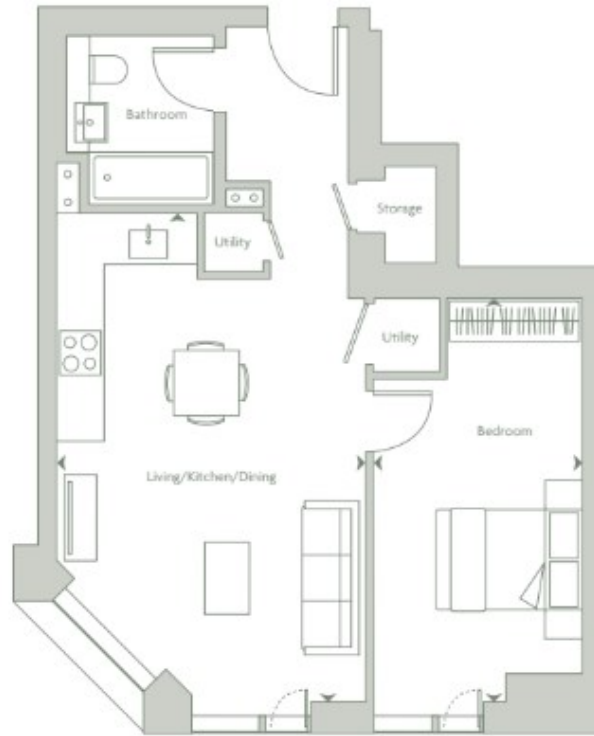


**1 Bed
Apartment
located in 190
Dantzic Street**

Offers Over £269,500



 **NPP
RESIDENTIAL**



Features on floors
 02-22 (Apartment 007)
 23-26 (Apartment 006)

Living / Kitchen / Dining
 Bedroom 1

6586 x 4205mm
 5485 x 2840mm



Internal Areas (NIA) 531 sq m 571.5 sq ft

Apartment locator

EPC Rating:
 Council Tax Band: C

Energy Efficiency Rating		
	Current	Potential
Very energy efficient - lower running costs		
(92 plus) A		
(81-91) B		
(69-80) C		
(55-68) D		
(39-54) E		
(21-38) F		
(1-20) G		
Not energy efficient - higher running costs		
England & Wales	EU Directive 2002/91/EC	

DIRECTIONS

CONTACT

22 Lloyd Street
 Manchester
 M2 5WA

E: info@nppresidential.co.uk
 T: 0161 639 0059
<https://nppresidential.co.uk/>

