



## Clarence Cottage Hampton Court Road, East Molesey

East Molesey

Offers in Region of £1,250,000

newton  
huxley.

# Clarence Cottage Hampton Court Road

East Molesey, East Molesey

5-bed period house overlooking Royal Bushy Park, 4 reception rooms, chain-free. Moments from Hampton Court Station. Front garden, historical charm, great potential in prime location. Council Tax band: G

Tenure: Freehold

- 5 Bedroom Period House Overlooking Royal Bushy Park
- Chain Free
- Fantastic Opportunity For Modernisation
- 4 Reception Rooms
- Moments From Hampton Court Station
- Rear Views Of Bushy Park and Hampton Court Palace Grounds To The Front
- Private Front Garden
- Character Throughout





## Clarence

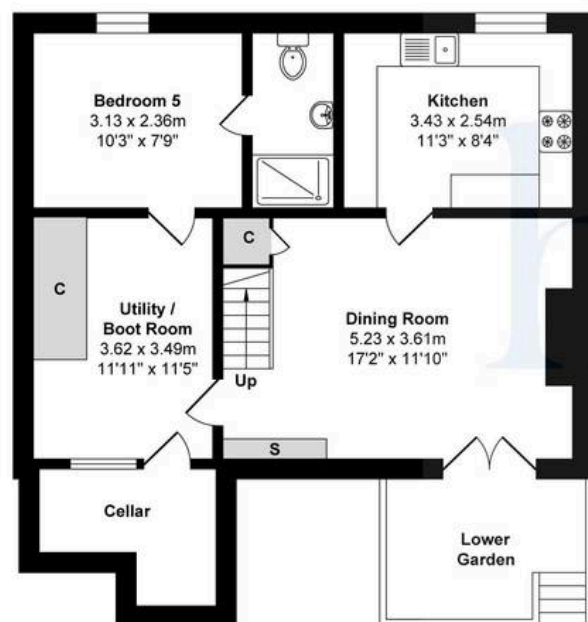
Total Area: 170.0 m<sup>2</sup> ... 1829.86 ft<sup>2</sup>

FOR ILLUSTRATIVE PURPOSE ONLY.

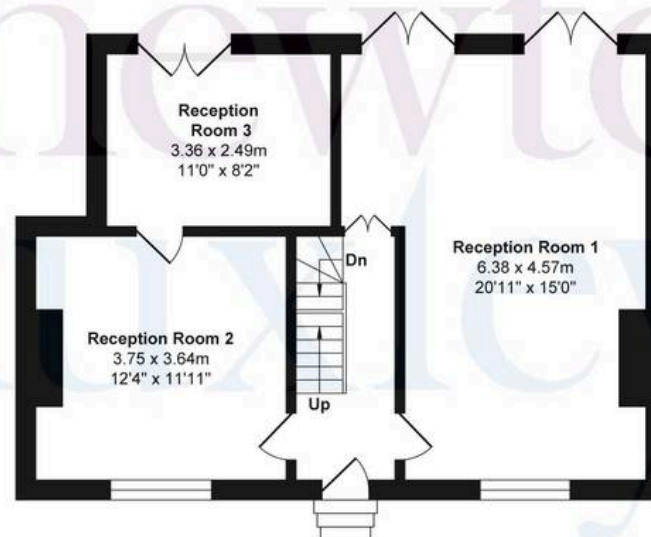
Whilst every attempt has been made to ensure the accuracy of the floor plan shown, all measurements, positioning, fixtures, features, fittings and any other data shown are an approximate interpretation for illustrative purposes only and are not to scale.

No responsibility is taken for any error, omission, miss-statement or use of data shown.

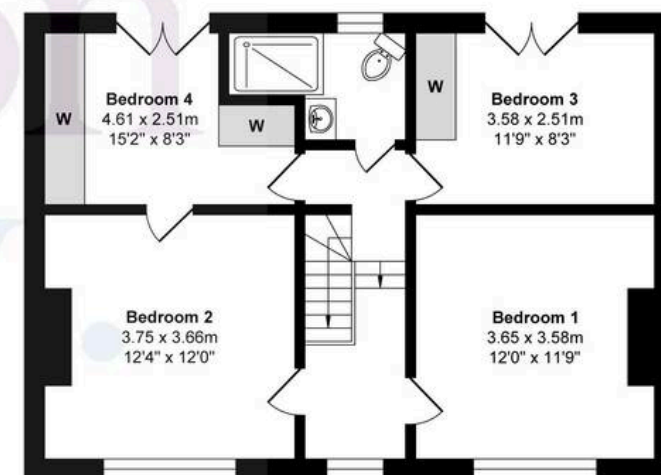
newton  
huxley.



Lower Ground Floor



Ground Floor



First Floor



newton  
huxley.