

Not specified (EPC Rating: D)

15 HAPTON STREET, THORNTON-
CLEVELEYS, FY5 4JD

PCM

£695 PCM



2 Bedroom Not specified located in Thornton-Cleveleys

Welcome to Hapton Street....

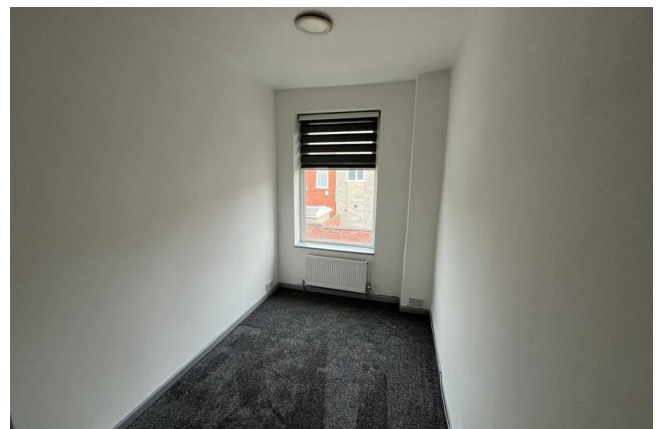
You will find this mid-terrace property on Hapton Street in Thornton-Cleveleys, this delightful property offers a perfect blend of character and modern living.

Spanning 743 square feet, the property features a well-proportioned reception room, ideal for entertaining guests or enjoying quiet evenings in. To the rear is a spacious dining kitchen, complete with a range of both base and eye level units. The two bedrooms provide ample space for relaxation, making it suitable for small families, couples, or individuals seeking a peaceful retreat. The bathroom is conveniently located, ensuring ease of access for all.

The location of this property is particularly appealing, as Thornton-Cleveleys is known for its friendly community and proximity to beautiful coastal scenery. With a short drive, residents can also enjoy leisurely strolls along the promenade, as well as easy access to local amenities, including shops, cafes, and parks.

This little family home presents an excellent opportunity for those looking to settle in a popular area with a rich sense of community. Don't miss the chance to make this lovely residence your own.

This unfurnished home is available to let immediately. All applicants will need a working, homeowner guarantor to support your application. All tenants and guarantors are to meet the affordability criteria. This is calculated per property depending on the rent amount. Please ask for details.

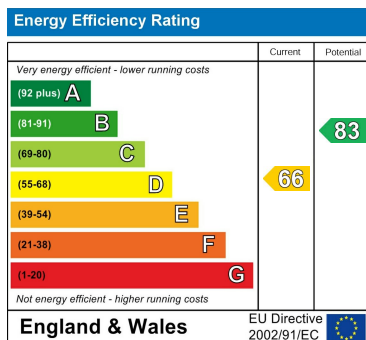


LETTING SOLUTIONS BLACKPOOL LTD | 52 WHITEGATE DRIVE, BLACKPOOL, LANCASHIRE, FY3 9DQ

Council Tax Band

A

Energy Performance Graph



Call us on

01253 886444

hello@lsblackpool.com

lsblackpool.com

Agents Note: Whilst every care has been taken to prepare these particulars, they are for guidance purposes only. All measurements are approximate and are for general guidance purposes only and whilst every care has been taken to ensure their accuracy, they should not be relied upon and potential buyers are advised to recheck the measurements.