



Levett Square, TW9

£695,000

A spacious two-bedroom apartment located within the sought-after Levett Square development by Taylor Wimpey. The property boasts a bright open-plan reception area and includes allocated, secure off-street parking space. Perfect for those looking for low-maintenance living in a quiet and prestigious setting.

Levett Square is a sought-after residential development set within beautifully landscaped communal gardens and is conveniently located within easy reach of the Thames Path, Kew Retail Park, and Kew Gardens Station, as well as a range of local village shopping amenities.

Features

- Two Double Bedrooms
- Modern Bathroom
- Riverside Development
- Allocated Parking Space
- Modern Finish
- Large Balcony



Levett Square, TW9

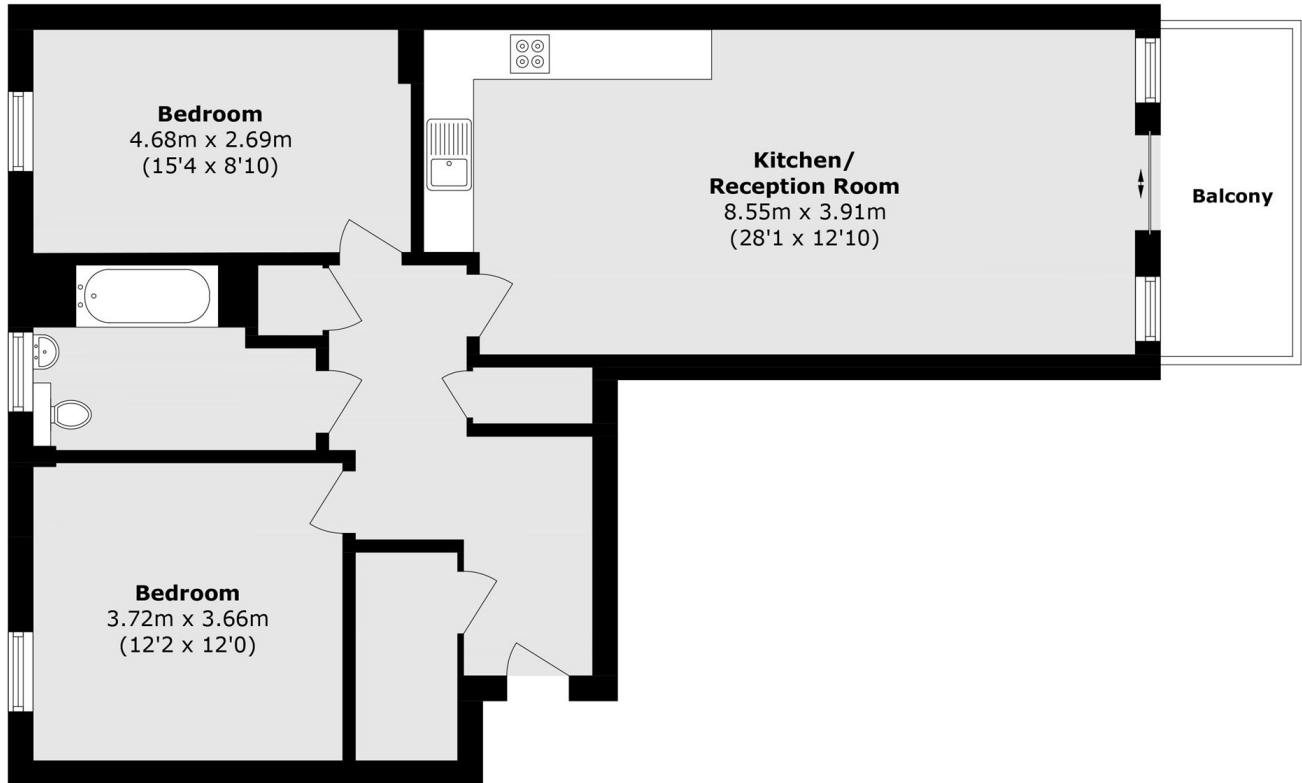
The property is accessed via a well-maintained communal entrance hall, complete with a secure entry phone system and both lift and staircase access to the third-floor landing.

Inside, a spacious entrance hall with ample built-in storage leads through to a large, bright open-plan reception room, which opens directly onto a private balcony. The contemporary kitchen is fully fitted with high-quality integrated appliances, offering both style and functionality. The accommodation includes a generous principal double bedroom with a modern en-suite shower room, a second well-proportioned double bedroom, and a stylish family bathroom.

Further benefits include an allocated parking space and a 24-hour on-site concierge service. The development also boasts beautifully landscaped communal gardens and offers easy access to the Thames Path, ideal for scenic riverside walks.



Levett Square, Kew, TW9



Total area (approx.): 82.9 sq. m (892.3 sq. ft)

Balcony area (approx.): 6.2 sq. m (66.7 sq. ft)