

82 Chelsfield Grove, Chorlton, Manchester, M21 7BD



JP&Brimelow
ESTATE AGENTS

Offers In The Region Of £220,000




VIDEO TOUR AVAILABLE A TWO DOUBLE BEDROOM, first floor apartment situated in this quiet residential area off Mauldeth Road West here in Chorlton. A five-minute walk from the Metrolink station on St Werburgh's Road giving you direct access into the City centre, Media City and a further ten-minute walk will take you to Chorlton centre, Beech Road with all its local amenities and independent shops and cafes. There are two good parks on your doorstep, Whalley Tennis Club is nearby and the well served motorway network. In brief, the accommodation comprises; A communal entrance hallway, a private entrance hall, two double bedrooms, a three-piece white bathroom, a lounge/dining room with a bay window to the front aspect and a modern fitted kitchen. The property benefits from wall mounted electric heaters, double glazing throughout, an allocated off-road parking to the rear aspect with communal gardens. Would ideally suit a first-time buyer or a professional couple and early viewing highly recommended due to the location.





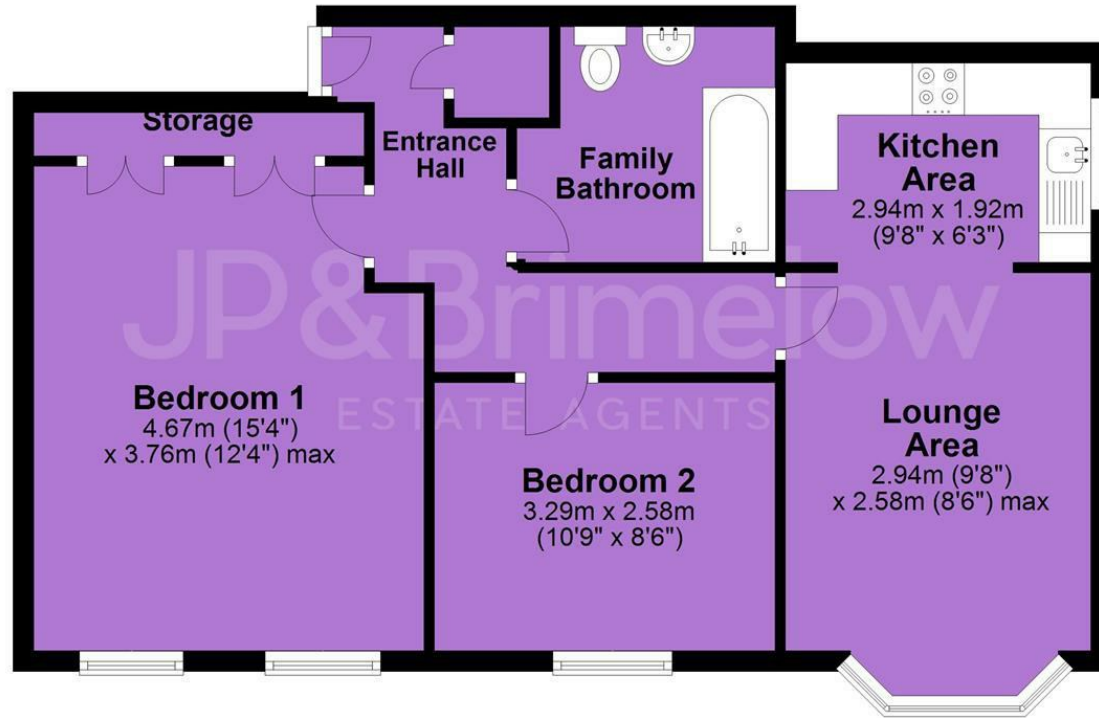
EPC Chart

Energy Efficiency Rating		Current	Potential
<i>Very energy efficient - lower running costs</i>			
(92 plus) A			
(81-91) B			
(69-80) C		80	85
(55-68) D			
(39-54) E			
(21-38) F			
(1-20) G			
<i>Not energy efficient - higher running costs</i>			
England & Wales		EU Directive 2002/91/EC 	



Tenure: **Leasehold** Council Tax Band: **B**

First Floor



JP & Brimelow Estate Agents Ltd
430 Barlow Moor Road, Manchester, M21 8AD
Tel: 0161 8822233
E: sales@jpbrimelow.co.uk www.jpandbrimelow.co.uk



JP & Brimelow
ESTATE AGENTS

NOTICE: JP & Brimelow Estate Agents Ltd for themselves and for the vendors or lessors of this property whose agents they are give notice that:

- the particulars are set out as a general outline only for the guidance of intending purchasers or lessees, and do not constitute, nor constitute part of, an offer or contract;
- all descriptions, dimensions, references to the condition and necessary permissions for use and occupation, and other details are given in good faith and are believed to be correct but any intending purchasers or tenants should not rely on them as statements or representations of fact but must satisfy themselves by inspection or otherwise as to the correctness of each of them;
- no person in the employment of JP & Brimelow Estate Agents Ltd has any authority to make or give any representation or warranty whatever in relation to this property.

 [jpandbrimelowstateagents](https://www.instagram.com/jpandbrimelowstateagents)

 [@jpandbrimelow](https://twitter.com/jpandbrimelow)